

À des fins de recherche uniquement

# Anticorps Monoclonal anti-OGDH

Numéro de catalogue: 66285-1-Ig **2 Publications**



## Informations de base

Numéro de catalogue: 66285-1-Ig	Numéro d'acquisition GenBank: BC004964	Méthode de purification: Purification par protéine A
Taille: 150ul, Concentration: 1300 µg/ml by Nanodrop and 1000 µg/ml by Bradford method using BSA as the standard;	Identification du gène (NCBI): 4967	CloneNo.: 1H7A2
Hôte: Mouse	Nom complet: oxoglutarate (alpha-ketoglutarate) dehydrogenase (lipoamide)	Dilutions recommandées: WB 1:1000-1:5000 IHC 1:50-1:500 IF 1:50-1:500
Isotype: IgG2b	MW calculé: 116 kDa	
Immunogen Catalog Number: AG7484	MW observés: 116 kDa	

## Applications

Applications testées: IF, IHC, WB, ELISA	Contrôles positifs: WB : tissu cardiaque humain, cellules ROS1728 IHC : tissu de cancer du poumon humain, IF : cellules HepG2,
Demandes citées: IHC, WB	
Spécificité de l'espèce: Humain, rat	
Espèces citées: Humain, souris	
<b>Remarque-IHC: il est suggéré de démasquer l'antigène avec un tampon de TE buffer pH 9,0; (*) A défaut, 'le démasquage de l'antigène peut être effectué avec un tampon citrate pH 6,0.</b>	

## Informations générales

OGDH(2-oxoglutarate dehydrogenase, mitochondrial) is also named as OGDC-E1 and belongs to the alpha-ketoglutarate dehydrogenase family. It is one of the three enzymatic components of 2-oxoglutarate dehydrogenase complex, which catalyzes the overall conversion of 2-oxoglutarate to succinyl-CoA and CO<sub>2</sub>. This protein has 3 isoforms produced by alternative splicing.

## Publications notables

Autrice	Pubmed ID	Journal	Application
Simone Kumstel	35452495	PLoS One	IHC
João Leandro	32160276	Hum Mol Genet	WB

## Stockage

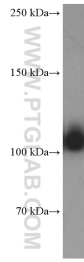
Stockage:  
Stocker à -20°C. Stable pendant un an après l'expédition.  
Tampon de stockage:  
PBS avec azoture de sodium à 0,02 % et glycérol à 50 % pH 7,3  
L'aliquotage n'est pas nécessaire pour le stockage à -20C

\*\*\* Les 20ul contiennent 0,1% de BSA.

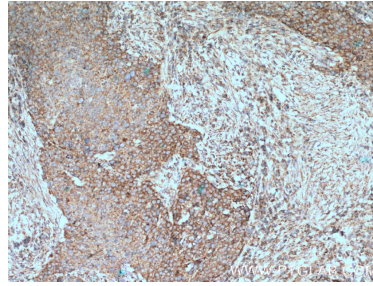
For technical support and original validation data for this product please contact:  
T: 1 (888) 4PTGLAB (1-888-478-4522) (toll free in USA), or 1(312) 455-8498 (outside USA)  
E: proteintech@ptglab.com  
W: ptglab.com

This product is exclusively available under Proteintech Group brand and is not available to purchase from any other manufacturer.

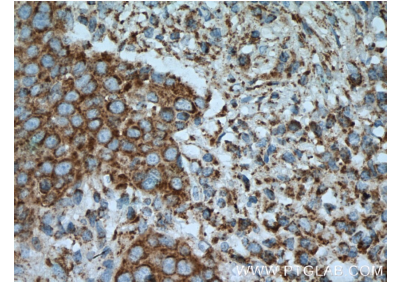
## Données de validation sélectionnées



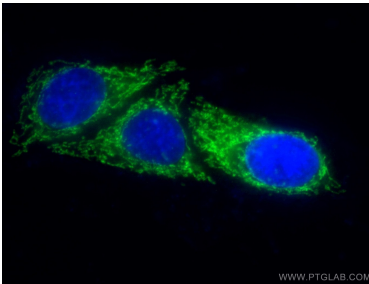
human heart tissue were subjected to SDS PAGE followed by western blot with 66285-1-Ig (OGDH Antibody) at dilution of 1:2500 incubated at room temperature for 1.5 hours.



Immunohistochemical analysis of paraffin-embedded human lung cancer tissue slide using 66285-1-Ig (OGDH Antibody) at dilution of 1:200 (under 10x lens). Heat mediated antigen retrieval with Tris-EDTA buffer (pH 9.0).



Immunohistochemical analysis of paraffin-embedded human lung cancer tissue slide using 66285-1-Ig (OGDH Antibody) at dilution of 1:200 (under 40x lens). Heat mediated antigen retrieval with Tris-EDTA buffer (pH 9.0).



Immunofluorescent analysis of (10% Formaldehyde ) fixed HepG2 cells using 66285-1-Ig(OGDH antibody) at dilution of 1:100 and Alexa Fluor 488-conjugated AffiniPure Goat Anti-Mouse IgG(H+L).