

À des fins de recherche uniquement

Anticorps Monoclonal anti-MYL3

Numéro de catalogue: 66286-1-Ig



Informations de base

Numéro de catalogue: 66286-1-Ig	Numéro d'acquisition GenBank: BC009790	Méthode de purification: Purification par protéine G
Taille: 150ul, Concentration: 1100 µg/ml by Nanodrop and 1000 µg/ml by Bradford method using BSA as the standard;	Identification du gène (NCBI): 4634	CloneNo.: 2E4B2
Hôte: Mouse	Nom complet: myosin, light chain 3, alkali; ventricular, skeletal, slow	Dilutions recommandées: WB 1:5000-1:50000 IHC 1:20-1:200
Isotype: IgG1	MW calculé 22 kDa	
Immunogen Catalog Number: AG24535	MW observés: 22-25 kDa	

Applications

Applications testées:

IHC, WB, ELISA

Spécificité de l'espèce:

Humain, porc, rat, souris

Remarque-IHC: il est suggéré de démasquer l'antigène avec un tampon de TE buffer pH 9,0; (*) À défaut, 'le démasquage de l'antigène peut être 'effectué avec un tampon citrate pH 6,0.

Contrôles positifs:

WB : tissu de muscle squelettique humain, tissu cardiaque de porc, tissu cardiaque de rat, tissu cardiaque de souris, tissu cardiaque humain

IHC : tissu cardiaque humain, tissu de muscle squelettique humain

Informations générales

MYL3, also named as MLC1v, is an essential light chain of myosin that is associated with muscle contraction. It is expressed in ventricular and slow skeletal muscle. MYL3 may serve as a target for caspase-3 in dying cardiomyocytes. Mutations of MYL3 gene cause hypertrophic cardiomyopathy. MYL3 has been identified as potential serum biomarker for drug induced myotoxicity. Great increase in MYL3 serum concentration has been observed in rats with cardiac and skeletal muscle injury. (PMID:21685905)

Stockage

Stockage:

Stocker à -20°C. Stable pendant un an après l'expédition.

Tampon de stockage:

PBS avec azoture de sodium à 0,02 % et glycérol à 50 % pH 7,3

L'aliquotage n'est pas nécessaire pour le stockage à -20C

*** Les 20ul contiennent 0,1% de BSA.

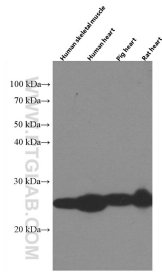
For technical support and original validation data for this product please contact:

T: 1 (888) 4PTGLAB (1-888-478-4522) (toll free in USA), or 1(312) 455-8498 (outside USA)

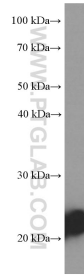
E: proteintech@ptglab.com
W: ptglab.com

This product is exclusively available under Proteintech Group brand and is not available to purchase from any other manufacturer.

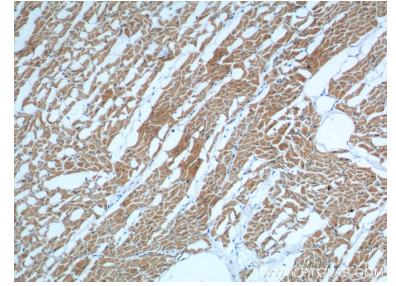
Données de validation sélectionnées



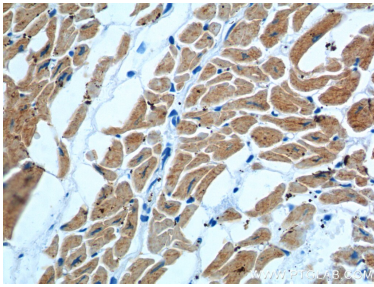
Various tissue lysates were subjected to SDS PAGE followed by western blot with 66286-1-Ig (MYL3 antibody) at dilution of 1:50000 incubated at room temperature for 1.5 hours.



human skeletal muscle tissue were subjected to SDS PAGE followed by western blot with 66286-1-Ig (MYL3 Antibody) at dilution of 1:20000 incubated at room temperature for 1.5 hours.



Immunohistochemical analysis of paraffin-embedded human heart tissue slide using 66286-1-Ig (MYL3 Antibody) at dilution of 1:600 (under 10x lens).



Immunohistochemical analysis of paraffin-embedded human heart tissue slide using 66286-1-Ig (MYL3 Antibody) at dilution of 1:600 (under 40x lens).