

À des fins de recherche uniquement

Anticorps Monoclonal anti-LDHA

Numéro de catalogue: 66287-1-Ig **13 Publications**



Informations de base

Numéro de catalogue: 66287-1-Ig	Numéro d'acquisition GenBank: BC067223	Méthode de purification: Purification par protéine A
Taille: 150ul , Concentration: 3200 µg/ml by Nanodrop and 1500 µg/ml by Bradford method using BSA as the standard;	Identification du gène (NCBI): 3939	CloneNo.: 2E2G6
Hôte: Mouse	Nom complet: lactate dehydrogenase A	Dilutions recommandées: WB 1:500-1:3000 IHC 1:100-1:400 IF 1:50-1:500
Isotype: IgG2b	MW calculé: 332 aa, 37 kDa	
Immunogen Catalog Number: AG21417	MW observés: 32-37 kDa	

Applications

Applications testées:

IF, IHC, WB, ELISA

Demandes citées:

IF, IHC, WB

Spécificité de l'espèce:

Humain, porc, souris

Espèces citées:

Humain, rat, souris

Remarque-IHC: il est suggéré de démasquer l'antigène avec un tampon de TE buffer pH 9,0; (*) A défaut, 'le démasquage de l'antigène peut être 'effectué avec un tampon citrate pH 6,0.

Contrôles positifs:

WB : tissu hépatique de porc, cellules A431, muscle squelettique de rat, muscle squelettique de souris, tissu de muscle squelettique de porc

IHC : tissu de cancer du foie humain,

IF : cellules HepG2,

Informations générales

LDHA, also named as LDH-M and NY-REN-59, is an enzyme which catalyzes the inter-conversion of pyruvate and L-lactate with concomitant inter-conversion of NADH and NAD⁺. LDHA is found in most somatic tissues, though predominantly in muscle tissue and tumours, and belongs to the lactate dehydrogenase family. It has long been known that many human cancers have higher LDHA levels compared to normal tissues. It has also been shown that LDHA plays an important role in the development, invasion and metastasis of malignancies. Mutations in LDHA have been linked to exertional myoglobinuria. LDHA has some isoforms with MW 26-40 kDa.

Publications notables

Autrice	Pubmed ID	Journal	Application
Shengqi Wang	34568078	Front Oncol	WB,IF
Shihua Bao	36355621	Hum Reprod	IHC
Ruiguan Wang	35669414	Front Oncol	WB

Stockage

Stockage:

Stocker à -20°C. Stable pendant un an après l'expédition.

Tampon de stockage:

PBS avec azoture de sodium à 0,02 % et glycérol à 50 % pH 7,3

L'aliquotage n'est pas nécessaire pour le stockage à -20C

*** Les 20ul contiennent 0,1% de BSA.

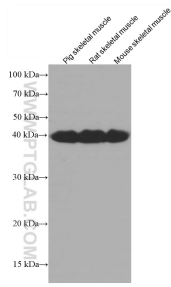
For technical support and original validation data for this product please contact:

T: 1 (888) 4PTGLAB (1-888-478-4522) (toll free in USA), or 1(312) 455-8498 (outside USA)

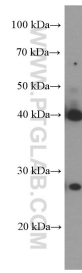
E: proteintech@ptglab.com
W: ptglab.com

This product is exclusively available under Proteintech Group brand and is not available to purchase from any other manufacturer.

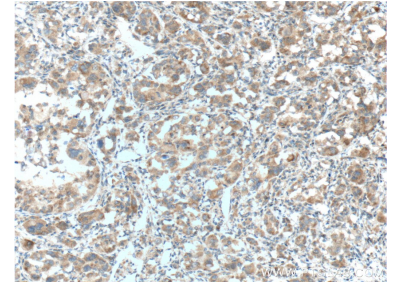
Données de validation sélectionnées



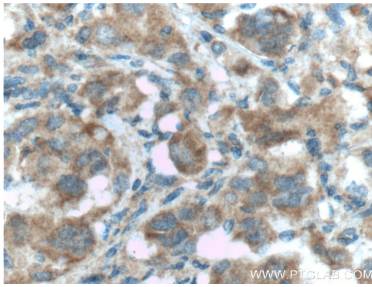
Various lysates were subjected to SDS PAGE followed by western blot with 66287-1-Ig (LDHA antibody) at dilution of 1:4000 incubated at room temperature for 1.5 hours.



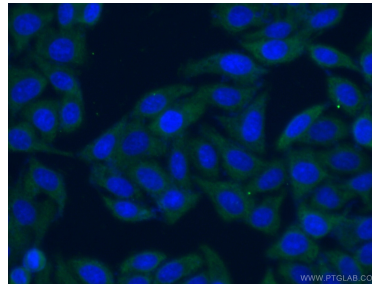
pig liver tissue were subjected to SDS PAGE followed by western blot with 66287-1-Ig (LDHA Antibody) at dilution of 1:1500 incubated at room temperature for 1.5 hours.



Immunohistochemical analysis of paraffin-embedded human liver cancer tissue slide using 66287-1-Ig (LDHA Antibody) at dilution of 1:200 (under 10x lens). Heat mediated antigen retrieval with Tris-EDTA buffer (pH 9.0).



Immunohistochemical analysis of paraffin-embedded human liver cancer tissue slide using 66287-1-Ig (LDHA Antibody) at dilution of 1:200 (under 40x lens). Heat mediated antigen retrieval with Tris-EDTA buffer (pH 9.0).



Immunofluorescent analysis of (-20°C Ethanol) fixed HepG2 cells using 66287-1-Ig(LDHA antibody) at dilution of 1:50 and Alexa Fluor 488-conjugated AffiniPure Goat Anti-Mouse IgG(H+L).