

À des fins de recherche uniquement

Anticorps Monoclonal anti-Integrin Beta 1



Numéro de catalogue: 66315-1-Ig **1 Publications**

Informations de base

Numéro de catalogue: 66315-1-Ig	Numéro d'acquisition GenBank: BC020057	Méthode de purification: Purification par protéine G
Taille: 150ul , Concentration: 2300 µg/ml by Nanodrop and 1000 µg/ml by Bradford method using BSA as the standard;	Identification du gène (NCBI): 3688	CloneNo.: 1A7C9
Hôte: Mouse	Nom complet: integrin, beta 1 (fibronectin receptor, beta polypeptide, antigen CD29 includes MDF2, MSK12)	Dilutions recommandées: WB 1:2000-1:16000
Isotype: IgG1	MW calculé 88 kDa	
Immunogen Catalog Number: AG24476	MW observés: 130 kDa	

Applications

Applications testées: FC, WB, ELISA	Contrôles positifs: WB : cellules HT-1080, cellules HUVEC
Demandes citées: WB	
Spécificité de l'espèce: Humain	
Espèces citées: Humain	

Informations générales

Integrin beta-1 (ITGB1), also named as CD29, is a 130 kDa single chain type I glycoprotein that is expressed in a heterodimeric complex with one of six distinct α subunits, comprising the very late activation antigen (VLA) subfamily of adhesion receptors. It is one of the essential surface molecules expressed on human MSC from bone marrow and other sources. The β 1 subunit is also broadly expressed on lymphocytes and monocytes, weakly expressed on granulocytes, and not expressed on erythrocytes. These receptors are involved in a variety of cell-cell and cell-matrix interactions.

Publications notables

Autrice	Pubmed ID	Journal	Application
Eun-Ah Cho	33275877	Structure	WB

Stockage

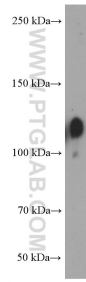
Stockage:
Stocker à -20°C. Stable pendant un an après l'expédition.
Tampon de stockage:
PBS avec azoture de sodium à 0,02 % et glycérol à 50 % pH 7,3
L'aliquotage n'est pas nécessaire pour le stockage à -20C

*** Les 20ul contiennent 0,1% de BSA.

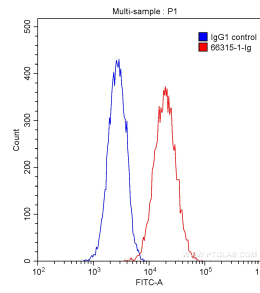
For technical support and original validation data for this product please contact:
T: 1 (888) 4PTGLAB (1-888-478-4522) (toll free in USA), or 1(312) 455-8498 (outside USA)
E: proteintech@ptglab.com
W: ptglab.com

This product is exclusively available under Proteintech Group brand and is not available to purchase from any other manufacturer.

Données de validation sélectionnées



HT-1080 cells were subjected to SDS PAGE followed by western blot with 66315-1-Ig (Integrin beta-1 Antibody) at dilution of 1:8000 incubated at room temperature for 1.5 hours.



1X10⁶ HUVEC cells were stained with 0.20 ug Anti-Human Integrin beta-1 (66315-1-Ig, Clone:1A7C9) (red) or 0.20 ug Mouse IgG1 Isotype Control (66360-1-Ig, Clone:T1F8D3F10) (blue) and CoraLite®488-Conjugated AffiniPure Goat Anti-Mouse IgG(H+L) with dilution of 1:1000. Cells were fixed with 90% MeOH.