

À des fins de recherche uniquement

# Anticorps Monoclonal anti-EPCAM/CD326



Numéro de catalogue: 66316-1-Ig

Phare

6 Publications

## Informations de base

Numéro de catalogue: 66316-1-Ig	Numéro d'acquisition GenBank: BC014785	Méthode de purification: Purification par protéine A
Taille: 150ul, Concentration: 1400 µg/ml by 4072 Nanodrop and 1000 µg/ml by Bradford method using BSA as the standard;	Identification du gène (NCBI): epithelial cell adhesion molecule	CloneNo.: 2A2D5
Hôte: Mouse	Nom complet: epithelial cell adhesion molecule	Dilutions recommandées: WB 1:2000-1:10000 IHC 1:50-1:500 IF 1:200-1:800
Isotype: IgG2a	MW calculé: 314 aa, 35 kDa	
Immunogen Catalog Number: AG15393	MW observés: 35-40 kDa	

## Applications

### Applications testées:

IF, IHC, WB, ELISA

### Demandes citées:

FC, WB

### Spécificité de l'espèce:

Humain

### Espèces citées:

Humain

**Remarque-IHC: il est suggéré de démasquer l'antigène avec un tampon de TE buffer pH 9,0; (\*) À défaut, 'le démasquage de l'antigène peut être 'effectué avec un tampon citrate pH 6,0.**

### Contrôles positifs:

WB : cellules HaCaT, cellules A431, cellules MCF-7, cellules T-47D

IHC : tissu de cancer du sein humain,

IF : cellules MCF-7, tissu de cancer de l'estomac humain, tissu de cancer du côlon humain

## Informations générales

Epithelial cell adhesion molecule (EpcAM, CD326) is a type I transmembrane glycoprotein that functions as a homophilic, epithelial-specific intercellular cell-adhesion molecule. In addition to cell adhesion, EpCAM is also involved in cellular signaling, cell migration, proliferation, and differentiation. EpCAM is highly expressed on most carcinomas and therefore of potential use as a diagnostic and prognostic marker for a variety of carcinomas, and has become a therapeutic target. EpCAM may occur in distinct forms due to glycosylation. (PMID: 20837599; 19249674; 21576002; 22647938; 12691820)

## Publications notables

Autrice	Pubmed ID	Journal	Application
Chunyuan Yang	32123160	Cell Death Dis	WB
Lei Wang	34218177	Biosens Bioelectron	FC
Yaxue Dai	35868149	Talanta	WB

## Stockage

### Stockage:

Stocker à -20°C. Stable pendant un an après l'expédition.

### Tampon de stockage:

PBS avec azoture de sodium à 0,02 % et glycérol à 50 % pH 7,3

L'aliquotage n'est pas nécessaire pour le stockage à -20C

\*\*\* Les 20ul contiennent 0,1% de BSA.

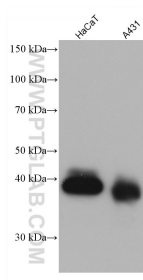
For technical support and original validation data for this product please contact:

T: 1 (888) 4PTGLAB (1-888-478-4522) (toll free in USA), or 1(312) 455-8498 (outside USA)

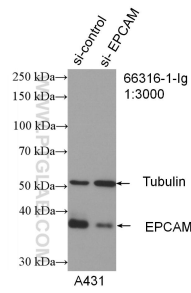
E: proteintech@ptglab.com  
W: ptglab.com

This product is exclusively available under Proteintech Group brand and is not available to purchase from any other manufacturer.

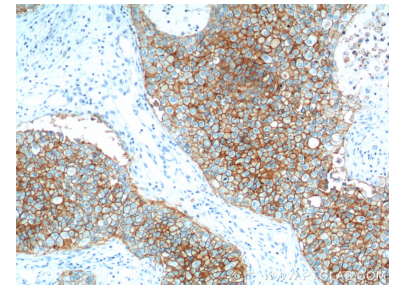
## Données de validation sélectionnées



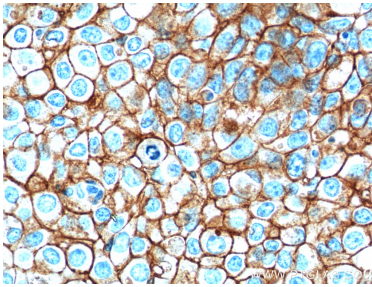
Various lysates were subjected to SDS PAGE followed by western blot with 66316-1-Ig (EPCAM antibody) at dilution of 1:5000 incubated at room temperature for 1.5 hours.



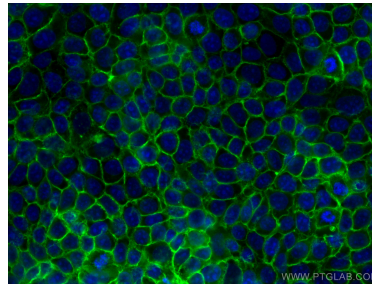
WB result of EPCAM antibody (66316-1-Ig; 1:3000; incubated at room temperature for 1.5 hours) with sh-Control and sh-EPCAM transfected A431 cells.



Immunohistochemical analysis of paraffin-embedded human breast cancer tissue slide using 66316-1-Ig (EPCAM Antibody) at dilution of 1:500 (under 10x lens). Heat mediated antigen retrieval with Tris-EDTA buffer (pH 9.0).



Immunohistochemical analysis of paraffin-embedded human breast cancer tissue slide using 66316-1-Ig (EPCAM Antibody) at dilution of 1:500 (under 40x lens). Heat mediated antigen retrieval with Tris-EDTA buffer (pH 9.0).



Immunofluorescent analysis of (-20°C Methanol) fixed MCF-7 cells using EPCAM antibody (66316-1-Ig, Clone: 2A2D5 ) at dilution of 1:400 and Coralite® 488-Conjugated AffiniPure Goat Anti-Mouse IgG(H+L).