

À des fins de recherche uniquement

Anticorps Monoclonal anti-Gamma Tubulin



Numéro de catalogue: 66320-1-Ig **18 Publications**

Informations de base

Numéro de catalogue: 66320-1-Ig	Numéro d'acquisition GenBank: BC000619	Méthode de purification: Purification par protéine A
Taille: 150ul, Concentration: 1000 µg/ml by Nanodrop and 549 µg/ml by Bradford method using BSA as the standard;	Identification du gène (NCBI): 7283	CloneNo.: 3F9H8
Hôte: Mouse	Nom complet: tubulin, gamma 1	Dilutions recommandées: WB 1:2000-1:12000 IHC 1:200-1:1000 IF 1:50-1:500
Isotype: IgG2a	MW calculé: 51 kDa	
Immunogen Catalog Number: AG23913	MW observés: 48-55 kDa	

Applications

Applications testées:
FC, IF, IHC, WB, ELISA

Demandes citées:
IF, WB

Spécificité de l'espèce:
canin, Humain, rat, souris

Espèces citées:
Humain, souris

Remarque-IHC: il est suggéré de démasquer l'antigène avec un tampon de TE buffer pH 9,0; (*) A défaut, 'le démasquage de l'antigène peut être effectué avec un tampon citrate pH 6,0.

Contrôles positifs:

WB : cellules NCCIT, cellules EC109, cellules HepG2, cellules HSCT6, cellules K-562, cellules NIH3T3

IHC : tissu de cancer du sein humain, tissu de cancer de la prostate humain

IF : cellules MDCK, cellules A549, cellules HeLa

Informations générales

Gamma tubulin is a member of tubulin superfamily and is a key component required for microtubule nucleation and stabilization. It is concentrated at the pericentriolar material of centrosomes in interphase cells, predominantly on spindle poles in mitotic cells, while found in midbodies during cytokinesis. Overexpression of gamma tubulin has been found in various cancers including breast cancer and gliomas. This antibody can well label the centrosome structure.

Publications notables

Autrice	Pubmed ID	Journal	Application
Yanli Liu	36238304	Front Immunol	IF
Emma Polonio-Alcalá	34771484	Cancers (Basel)	WB
Michaela Bosakova	33200460	EMBO Mol Med	IF

Stockage

Stockage:

Stocker à -20°C. Stable pendant un an après l'expédition.

Tampon de stockage:

PBS avec azoture de sodium à 0,02 % et glycérol à 50 % pH 7,3

L'aliquotage n'est pas nécessaire pour le stockage à -20C

***** Les 20ul contiennent 0,1% de BSA.**

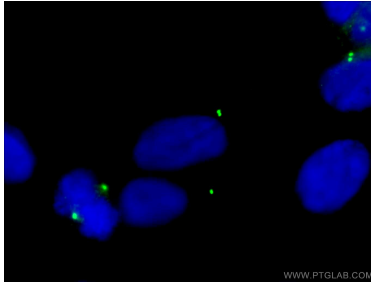
For technical support and original validation data for this product please contact:

T: 1 (888) 4PTGLAB (1-888-478-4522) (toll free in USA), or 1(312) 455-8498 (outside USA)

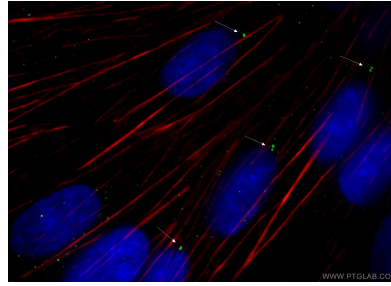
E: proteintech@ptglab.com
W: ptglab.com

This product is exclusively available under Proteintech Group brand and is not available to purchase from any other manufacturer.

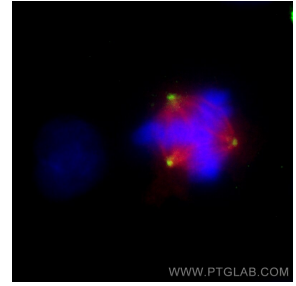
Données de validation sélectionnées



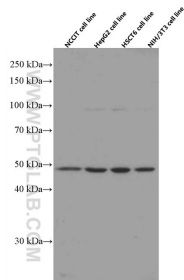
Immunofluorescent analysis of (-20°C Ethanol) fixed MDCK cells using 66320-1-Ig (gamma tubulin antibody) at dilution of 1:200 and CoraLite488-Conjugated AffiniPure Goat Anti-Mouse IgG(H+L).



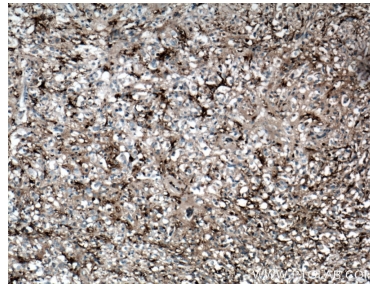
Immunofluorescent analysis of (-20°C Ethanol) fixed MDCK cells using 66320-1-Ig (gamma tubulin antibody) at dilution of 1:200 and CoraLite488-Conjugated AffiniPure Goat Anti-Mouse IgG(H+L).



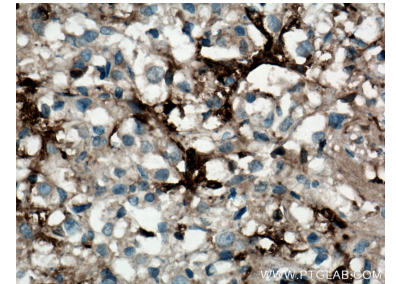
Immunofluorescent analysis of (-20°C Methanol) fixed A549 cells using Gamma Tubulin antibody (66320-1-Ig, Clone: 3F9H8) at dilution of 1:1000 and CoraLite®488-Conjugated AffiniPure Goat Anti-Mouse IgG(H+L), Alpha Tubulin antibody (11224-1-AP, red).



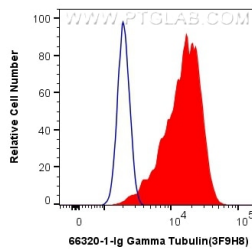
Various lysates were subjected to SDS PAGE followed by western blot with 66320-1-Ig (gamma tubulin antibody) at dilution of 1:6000 incubated at room temperature for 1.5 hours.



Immunohistochemical analysis of paraffin-embedded human breast cancer tissue slide using 66320-1-Ig (gamma tubulin antibody) at dilution of 1:500 (under 10x lens. Heat mediated antigen retrieval with Tris-EDTA buffer (pH 9.0).



Immunohistochemical analysis of paraffin-embedded human breast cancer tissue slide using 66320-1-Ig (gamma tubulin antibody) at dilution of 1:500 (under 40x lens. Heat mediated antigen retrieval with Tris-EDTA buffer (pH 9.0).



1X10⁶ HeLa cells were intracellularly stained with 0.4 ug Anti-Human Gamma Tubulin (66320-1-Ig, Clone:3F9H8) and CoraLite®488-Conjugated AffiniPure Goat Anti-Mouse IgG(H+L) at dilution 1:1000 (red), or 0.4 ug Mouse IgG2a Isotype Control (C1.18.4) (65208-1-Ig, Clone: C1.18.4) (blue). Cells were fixed with 4% PFA and permeabilized with Flow Cytometry Perm Buffer (PF00011-C).