

À des fins de recherche uniquement

Anticorps Monoclonal anti-Fascin

Numéro de catalogue: 66321-1-Ig

Phare

2 Publications



Informations de base

Numéro de catalogue: 66321-1-Ig	Numéro d'acquisition GenBank: BC000521	Méthode de purification: Purification par protéine A
Taille: 150ul , Concentration: 2100 µg/ml by Nanodrop and 1000 µg/ml by Bradford method using BSA as the standard;	Identification du gène (NCBI): 6624	CloneNo.: 1B5G3
Hôte: Mouse	Nom complet: fascin homolog 1, actin-bundling protein (Strongylocentrotus purpuratus)	Dilutions recommandées: WB 1:1000-1:4000 IHC 1:20-1:2000 IF 1:50-1:500
Isotype: IgG2a	MW calculé 55 kDa	
Immunogen Catalog Number: AG6074	MW observés: 55 kDa	

Applications

Applications testées:
FC, IF, IHC, WB, ELISA

Demandes citées:
IF, IHC, WB

Spécificité de l'espèce:
Humain

Espèces citées:
Humain

Remarque-IHC: il est suggéré de démasquer l'antigène avec un tampon de TE buffer pH 9,0; (*) A défaut, 'le démasquage de l'antigène peut être effectué avec un tampon citrate pH 6,0.

Contrôles positifs:

WB : cellules SH-SY5Y, cellules HeLa, cellules K-562

IHC : tissu d'amygdalite humaine, tissu de cancer de la peau humaine, tissu de cancer du pancréas humain

IF : cellules SH-SY5Y, tissu d'amygdalite humaine

Informations générales

Fascin is a highly conserved and ubiquitous actin cross-linking protein that has a major function in cell motility and adhesion. Fascin localizes to a number of highly dynamic cellular structures that require strong mechanical support which include stress fibers and cellular protrusions such as microvilli, microspikes and lamellipodia. Fascin is up-regulated in many human carcinomas. It's a marker for Reed-Sternberg cells in Hodgkin's disease; it is also a highly selective marker for dendritic cells of lymphoid tissues.

Publications notables

Autrice	Pubmed ID	Journal	Application
Ivan Ramirez	33641240	Cytoskeleton (Hoboken)	WB
Leiyu Hao	33458919	Cell Prolif	WB,IF,IHC

Stockage

Stockage:

Stocker à -20°C. Stable pendant un an après l'expédition.

Tampon de stockage:

PBS avec azoture de sodium à 0,02 % et glycérol à 50 % pH 7,3

L'aliquotage n'est pas nécessaire pour le stockage à -20C

*** Les 20ul contiennent 0,1% de BSA.

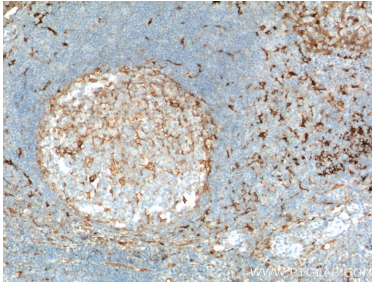
For technical support and original validation data for this product please contact:

T: 1 (888) 4PTGLAB (1-888-478-4522) (toll free in USA), or 1(312) 455-8498 (outside USA)

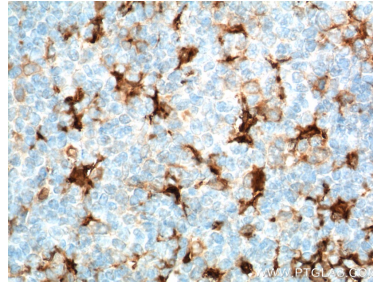
E: proteintech@ptglab.com
W: ptglab.com

This product is exclusively available under Proteintech Group brand and is not available to purchase from any other manufacturer.

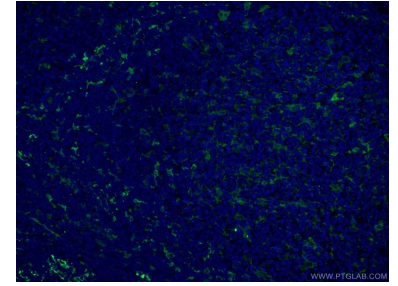
Données de validation sélectionnées



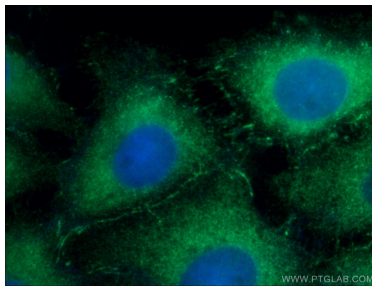
Immunohistochemical analysis of paraffin-embedded human tonsillitis tissue slide using 66321-1-Ig (Fascin Antibody) at dilution of 1:600 (under 10x lens). Heat mediated antigen retrieval with Tris-EDTA buffer (pH 9.0).



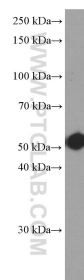
Immunohistochemical analysis of paraffin-embedded human tonsillitis tissue slide using 66321-1-Ig (Fascin Antibody) at dilution of 1:600 (under 40x lens). Heat mediated antigen retrieval with Tris-EDTA buffer (pH 9.0).



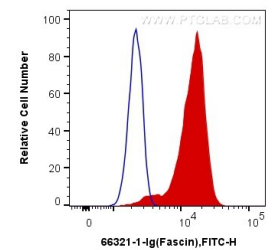
Immunofluorescent analysis of (4% PFA) fixed human tonsillitis tissue using 66321-1-Ig (Fascin antibody) at dilution of 1:100 and CoraLite488-Conjugated AffiniPure Goat Anti-Mouse IgG(H+L).



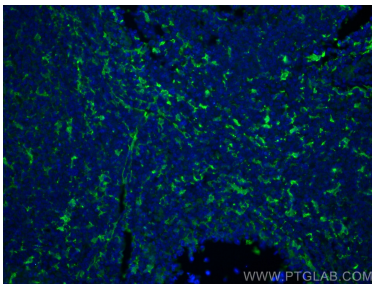
Immunofluorescent analysis of (-20°C Ethanol) fixed SH-SY5Y cells using 66321-1-Ig(Fascin antibody) at dilution of 1:50 and Alexa Fluor 488-conjugated AffiniPure Goat Anti-Mouse IgG(H+L).



SH-SY5Y cells were subjected to SDS PAGE followed by western blot with 66321-1-Ig (Fascin Antibody) at dilution of 1:2000 incubated at room temperature for 1.5 hours.



1×10^6 SH-SY5Y cells were intracellularly stained with 0.2 ug Anti-Human Fascin (66321-1-Ig, Clone:1B5G3) and CoraLite@488-Conjugated AffiniPure Goat Anti-Mouse IgG(H+L) at dilution 1:1000 (red), or 0.2 ug Control Antibody. Cells were fixed with 4% PFA and permeabilized with Flow Cytometry Perm Buffer (PF00011-C).



Immunofluorescent analysis of (4% PFA) fixed human tonsillitis tissue using Fascin antibody (66321-1-Ig, Clone: 1B5G3) at dilution of 1:400 and CoraLite@488-Conjugated AffiniPure Goat Anti-Mouse IgG(H+L).