

À des fins de recherche uniquement

Anticorps Monoclonal anti-SMYD3

Numéro de catalogue: 66330-1-Ig



Informations de base

Numéro de catalogue: 66330-1-Ig	Numéro d'acquisition GenBank: BC031010	Méthode de purification: Purification par protéine G
Taille: 150ul, Concentration: 1700 µg/ml by Nanodrop and 1000 µg/ml by Bradford method using BSA as the standard;	Identification du gène (NCBI): 64754	CloneNo.: 1B5C10
Hôte: Mouse	Nom complet: SET and MYND domain containing 3	Dilutions recommandées: WB 1:500-1:2000 IHC 1:50-1:500 IF 1:200-1:800
Isotype: IgG1	MW calculé 428aa,49 kDa; 369aa,42 kDa	
Immunogen Catalog Number: AG2624	MW observés: 49 kDa	

Applications

Applications testées:

IF, IHC, WB, ELISA

Spécificité de l'espèce:

Humain

Remarque-IHC: il est suggéré de démasquer l'antigène avec un tampon de TE buffer pH 9,0; (*) À défaut, le démasquage de l'antigène peut être effectué avec un tampon citrate pH 6,0.

Contrôles positifs:

WB : cellules A431, cellules COLO 320, cellules HEK-293, cellules MCF-7

IHC : tissu de cancer du pancréas humain, tissu de cancer du foie humain

IF : cellules MCF-7,

Informations générales

SMYD3, also name as ZMYND1 and ZNFN3A1, belongs to the histone-lysine methyltransferase family. It is a histone methyltransferase that plays an important role in transcriptional regulation in human carcinogenesis. It can specifically methylate histone H3 at lysine 4 and activate the transcription of a set of downstream genes, including several oncogenes (e.g., N-myc, CrkL, Wnt10b, RIZ and hTERT) and genes involved in the control of cell cycle. (PMID: 20957523). It plays an important role in transcriptional activation as a member of an RNA polymerase complex. SMYD3 is frequently overexpressed in different types of cancer cells. It functions as a coactivator of Era and potentiates Era activity in response to ligand. SMYD3 as a new coactivator for ER-mediated transcription, providing a possible link between SMYD3 overexpression and breast cancer. (PMID: 19509295) The common variable number of tandem repeats polymorphism in SMYD3 is a susceptibility factor for some types of human cancer (PMID: 16155568). Mainly cytoplasmic when cells are arrested at G0/G1, accumulates in the nucleus at S phase and G2/M (UniProt).

Stockage

Stockage:

Stocker à -20°C. Stable pendant un an après l'expédition.

Tampon de stockage:

PBS avec azoture de sodium à 0,02 % et glycérol à 50 % pH 7,3

L'aliquoteage n'est pas nécessaire pour le stockage à -20C

*** Les 20ul contiennent 0,1% de BSA.

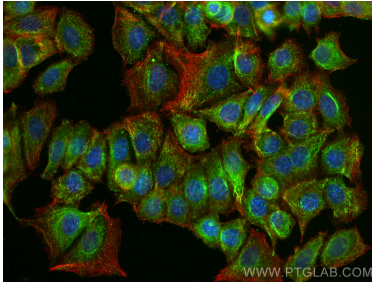
For technical support and original validation data for this product please contact:

T: 1 (888) 4PTGLAB (1-888-478-4522) (toll free in USA), or 1(312) 455-8498 (outside USA)

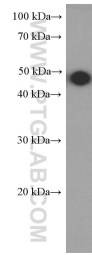
E: proteintech@ptglab.com
W: ptglab.com

This product is exclusively available under Proteintech Group brand and is not available to purchase from any other manufacturer.

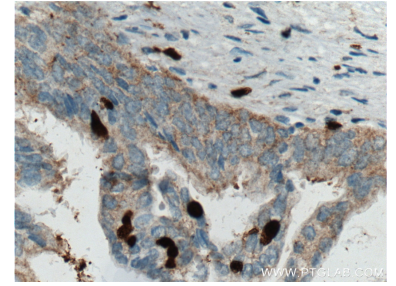
Données de validation sélectionnées



Immunofluorescent analysis of (-20°C Ethanol) fixed MCF-7 cells using SMYD3 antibody (66330-1-Ig, Clone: 1B5C10) at dilution of 1:400 and CoraLite®488-Conjugated AffiniPure Goat Anti-Mouse IgG(H+L), (CL594-Phalloidin, red).



A431 cells were subjected to SDS PAGE followed by western blot with 66330-1-Ig (SMYD3 Antibody) at dilution of 1:1000 incubated at room temperature for 1.5 hours.



Immunohistochemical analysis of paraffin-embedded human pancreas cancer tissue slide using 66330-1-Ig (SMYD3 Antibody) at dilution of 1:200 (under 40x lens). Heat mediated antigen retrieval with Tris-EDTA buffer (pH 9.0).