

À des fins de recherche uniquement

Anticorps Monoclonal anti-GP73/GOLPH2



Numéro de catalogue: 66331-1-Ig

Phare

2 Publications

Informations de base

Numéro de catalogue: 66331-1-Ig	Numéro d'acquisition GenBank: BC001740	Méthode de purification: Purification par protéine G
Taille: 150ul , Concentration: 1000 µg/ml by Bradford method using BSA as the standard;	Identification du gène (NCBI): 51280	CloneNo.: 3D1F1
Hôte: Mouse	Nom complet: golgi membrane protein 1	Dilutions recommandées: WB 1:500-1:2000 IHC 1:20-1:200 IF 1:50-1:500
Isotype: IgG1	MW calculé: 45 kDa	
Immunogen Catalog Number: AG7207	MW observés: 73 kDa	

Applications

Applications testées: IF, IHC, WB, ELISA	Contrôles positifs: WB : cellules HEK-293, IHC : tissu de cancer du foie humain, IF : cellules HeLa,
Demandes citées: WB	
Spécificité de l'espèce: Humain	
Espèces citées: Humain	
Remarque-IHC: il est suggéré de démasquer l'antigène avec un tampon de TE buffer pH 9,0; (*) A défaut, 'le démasquage de l'antigène peut être 'effectué avec un tampon citrate pH 6,0.	

Informations générales

Golgi phosphoprotein 2 (GOLPH2, also known as GP73 or GOLM1) is a resident Golgi type-II membrane protein. It is predominantly expressed in the epithelial cells of many human tissues. GOLPH2 traffics through endosomes and can be secreted into the circulation. Its expression is upregulated in a number of tumors and GOLPH2 could be a promising serum marker for hepatocellular carcinoma. We got 73 kDa in western blotting due to phosphorylation.

Publications notables

Autrice	Pubmed ID	Journal	Application
Meng Wang	34268128	Front Oncol	WB
Wei-Qing Shao	35443161	Cell Rep	WB

Stockage

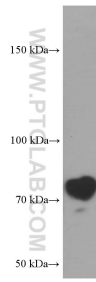
Stockage:
Stocker à -20°C. Stable pendant un an après l'expédition.
Tampon de stockage:
PBS avec azoture de sodium à 0,02 % et glycérol à 50 % pH 7,3
L'aliquotage n'est pas nécessaire pour le stockage à -20C

*** Les 20ul contiennent 0,1% de BSA.

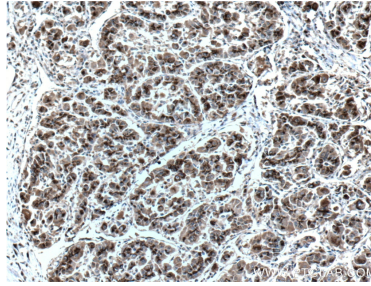
For technical support and original validation data for this product please contact:
T: 1 (888) 4PTGLAB (1-888-478-4522) (toll free in USA), or 1(312) 455-8498 (outside USA)
E: proteintech@ptglab.com
W: ptglab.com

This product is exclusively available under Proteintech Group brand and is not available to purchase from any other manufacturer.

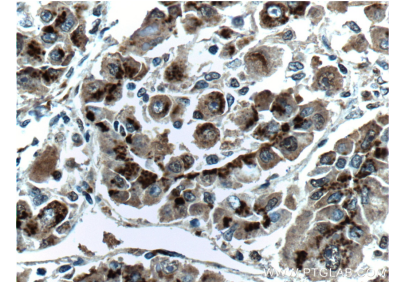
Données de validation sélectionnées



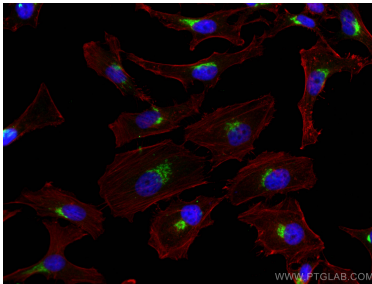
HEK-293 cells were subjected to SDS PAGE followed by western blot with 66331-1-Ig (GP73/GOLPH2 antibody at dilution of 1:1000 incubated at room temperature for 1.5 hours.



Immunohistochemical analysis of paraffin-embedded human liver cancer tissue slide using 66331-1-Ig (GP73/GOLPH2 antibody at dilution of 1:200 (under 10x lens). Heat mediated antigen retrieval with Tris-EDTA buffer (pH 9.0).



Immunohistochemical analysis of paraffin-embedded human liver cancer tissue slide using 66331-1-Ig (GP73/GOLPH2 antibody at dilution of 1:200 (under 40x lens). Heat mediated antigen retrieval with Tris-EDTA buffer (pH 9.0).



Immunofluorescent analysis of (4% PFA) fixed HeLa cells using GP73/GOLPH2 antibody (66331-1-Ig, Clone: 3D1F1) at dilution of 1:200 and CoraLite®488-Conjugated AffiniPure Goat Anti-Mouse IgG(H+L), CL594-Phalloidin (red).