

À des fins de recherche uniquement

# Anticorps Monoclonal anti-IGSF2

Numéro de catalogue: 66333-1-Ig



## Informations de base

Numéro de catalogue: 66333-1-Ig	Numéro d'acquisition GenBank: BC136484	Méthode de purification: Purification par protéine G
Taille: 150ul, Concentration: 1300 µg/ml by Nanodrop and 1000 µg/ml by Bradford method using BSA as the standard;	Identification du gène (NCBI): 9398	CloneNo.: 1E6A7
Hôte: Mouse	Nom complet: immunoglobulin superfamily, member 2	Dilutions recommandées: WB 1:500-1:2000 IHC 1:50-1:500
Isotype: IgG1	MW observés: 120 kDa	
Immunogen Catalog Number: AG23297		

## Applications

Applications testées: FC, IHC, WB, ELISA	Contrôles positifs: WB : cellules RAW 264.7, IHC : tissu de cancer du poumon humain,
Spécificité de l'espèce: Humain, souris	
<b>Remarque-IHC: il est suggéré de démasquer l'antigène avec un tampon de TE buffer pH 9.0; (*) À défaut, le démasquage de l'antigène peut être effectué avec un tampon citrate pH 6.0.</b>	

## Informations générales

IGSF2, also known as CD101, is a low abundance protein. Expression of CD101 is found on monocytes, granulocytes and dendritic cells. In addition expression on T lymphocytes is important for cell activation. It plays a role as inhibitor of T-cells proliferation induced by CD3 and inhibits expression of IL2RA on activated T-cells and secretion of IL2.

## Stockage

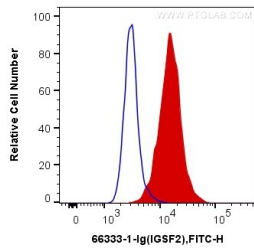
Stockage:  
Stocker à -20°C. Stable pendant un an après l'expédition.  
Tampon de stockage:  
PBS avec azote de sodium à 0,02 % et glycérol à 50 % pH 7,3  
L'aliquotage n'est pas nécessaire pour le stockage à -20C

\*\*\* Les 20ul contiennent 0,1% de BSA.

For technical support and original validation data for this product please contact:  
T: 1 (888) 4PTGLAB (1-888-478-4522) (toll free in USA), or 1(312) 455-8498 (outside USA)  
E: proteintech@ptglab.com  
W: ptglab.com

This product is exclusively available under Proteintech Group brand and is not available to purchase from any other manufacturer.

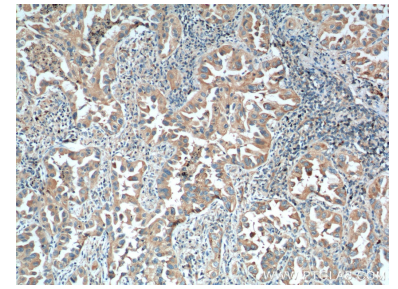
## Données de validation sélectionnées



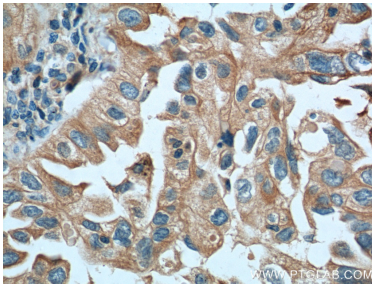
1X10<sup>6</sup> RAW 264.7 cells were intracellularly stained with 0.2 ug Anti-Human IGSF2 (66333-1-Ig, Clone:1E6A7) and CoralLite®488-Conjugated AffiniPure Goat Anti-Mouse IgG(H+L) at dilution 1:1000 (red), or 0.2 ug Mouse IgG1 Isotype Control (66360-1-Ig, Clone: T1F8D3F10) (blue). Cells were fixed with 4% PFA and permeabilized with Flow Cytometry Perm Buffer (PF00011-C).



RAW 264.7 cells were subjected to SDS PAGE followed by western blot with 66333-1-Ig (IGSF2 Antibody) at dilution of 1:1000 incubated at room temperature for 1.5 hours.



Immunohistochemical analysis of paraffin-embedded human lung cancer tissue slide using 66333-1-Ig (IGSF2 Antibody) at dilution of 1:200 (under 10x lens). Heat mediated antigen retrieval with Tris-EDTA buffer (pH 9.0).



Immunohistochemical analysis of paraffin-embedded human lung cancer tissue slide using 66333-1-Ig (IGSF2 Antibody) at dilution of 1:200 (under 40x lens). Heat mediated antigen retrieval with Tris-EDTA buffer (pH 9.0).