

À des fins de recherche uniquement

Anticorps Monoclonal anti-NUDT21



Numéro de catalogue: 66335-1-Ig

Phare

2 Publications

Informations de base

Numéro de catalogue: 66335-1-Ig	Numéro d'acquisition GenBank: BC001403	Méthode de purification: Purification par protéine G
Taille: 150ul, Concentration: 1700 µg/ml by Nanodrop and 1000 µg/ml by Bradford method using BSA as the standard;	Identification du gène (NCBI): 11051	CloneNo.: 1C4C8
Hôte: Mouse	Nom complet: nudix (nucleoside diphosphate linked moiety X)-type motif 21	Dilutions recommandées: WB 1:1000-1:6000 IHC 1:500-1:2000 IF 1:1000-1:4000
Isotype: IgG1	MW calculé: 26 kDa	
Immunogen Catalog Number: AG12260	MW observés: 27 kDa	

Applications

Applications testées:

IF, IHC, WB, ELISA

Demandes citées:

IP, WB

Spécificité de l'espèce:

Humain, souris

Espèces citées:

Humain

Remarque-IHC: il est suggéré de démasquer l'antigène avec un tampon de TE buffer pH 9,0; (*) A défaut, 'le démasquage de l'antigène peut être 'effectué avec un tampon citrate pH 6,0.

Contrôles positifs:

WB : cellules NIH/3T3, cellules HEK-293, cellules HeLa, cellules MCF-7

IHC : tissu cérébral humain, tissu cérébral de souris, tissu hépatique de souris

IF : cellules HeLa, cellules HepG2

Informations générales

Cleavage and polyadenylation specific factor 5, 25 kDa (CPSF5, synonym: CFIM25) is one subunit of a cleavage factor required for 3' RNA cleavage and polyadenylation processing. The interaction of CPSF5 with the RNA is one of the earliest steps in the assembly of the 3' end processing complex and facilitates the recruitment of other processing factors.

Publications notables

Autrice	Pubmed ID	Journal	Application
Zhijie Hu	36073763	J Mol Cell Biol	WB
Seung Wook Yang	31980388	Mol Cell	IP

Stockage

Stockage:

Stocker à -20°C. Stable pendant un an après l'expédition.

Tampon de stockage:

PBS avec azoture de sodium à 0,02 % et glycérol à 50 % pH 7,3

L'aliquotage n'est pas nécessaire pour le stockage à -20C

*** Les 20ul contiennent 0,1% de BSA.

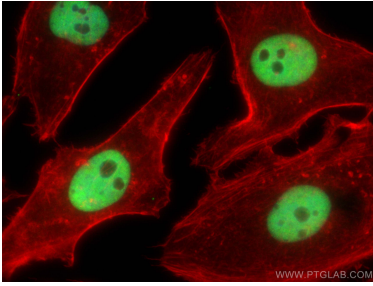
For technical support and original validation data for this product please contact:

T: 1 (888) 4PTGLAB (1-888-478-4522) (toll free in USA), or 1(312) 455-8498 (outside USA)

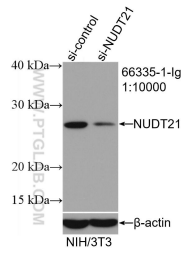
E: proteintech@ptglab.com
W: ptglab.com

This product is exclusively available under Proteintech Group brand and is not available to purchase from any other manufacturer.

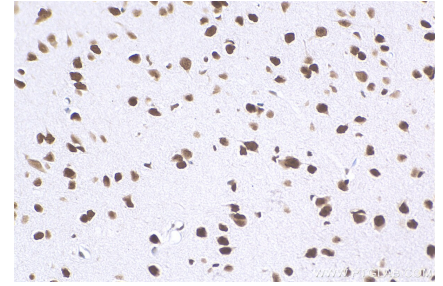
Données de validation sélectionnées



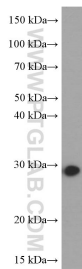
Immunofluorescent analysis of (4% PFA) fixed HeLa cells using NUDT21 antibody (66335-1-Ig, Clone: 1C4C8) at dilution of 1:2000 and CoraLite®488-Conjugated AffiniPure Goat Anti-Mouse IgG(H+L), CL594-phalloidin (red).



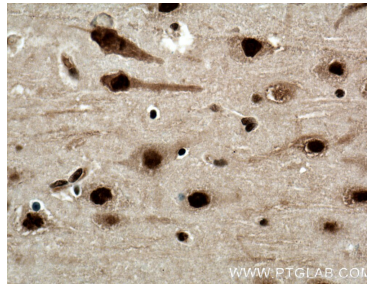
WB result of NUDT21 antibody (66335-1-Ig; 1:10000; incubated at room temperature for 1.5 hours) with sh-Control and sh-NUDT21 transfected NIH/3T3 cells.



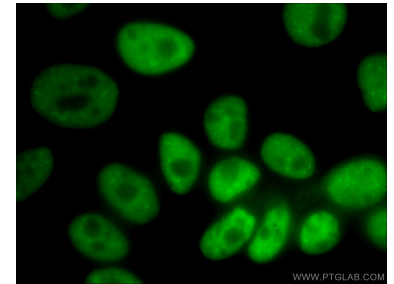
Immunohistochemical analysis of paraffin-embedded mouse brain tissue slide using 66335-1-Ig (NUDT21 antibody) at dilution of 1:1000 (under 40x lens). Heat mediated antigen retrieval with Tris-EDTA buffer (pH 9.0).



NIH/3T3 cells were subjected to SDS PAGE followed by western blot with 66335-1-Ig (NUDT21 antibody) at dilution of 1:3000 incubated at room temperature for 1.5 hours.



Immunohistochemical analysis of paraffin-embedded human brain tissue slide using 66335-1-Ig (NUDT21 antibody) at dilution of 1:1000 (under 40x lens). Heat mediated antigen retrieval with Tris-EDTA buffer (pH 9.0).



Immunofluorescent analysis of (10% Formaldehyde) fixed HepG2 cells using 66335-1-Ig(NUDT21 antibody) at dilution of 1:400 and Alexa Fluor 488-conjugated AffiniPure Goat Anti-Mouse IgG(H+L).