

À des fins de recherche uniquement

Anticorps Monoclonal anti-MMP3

Numéro de catalogue: 66338-1-Ig

Phare

31 Publications



Informations de base

Numéro de catalogue: 66338-1-Ig	Numéro d'acquisition GenBank: BC074869	Méthode de purification: Purification par protéine A
Taille: 150ul , Concentration: 1000 µg/ml by Bradford method using BSA as the standard;	Identification du gène (NCBI): 4314	CloneNo.: 1F5A9
Hôte: Mouse	Nom complet: matrix metallopeptidase 3 (stromelysin 1, progelatinase)	Dilutions recommandées: WB 1:5000-1:50000 IHC 1:500-1:2000
Isotype: IgG1	MW calculé 477 aa, 54 kDa	
Immunogen Catalog Number: AG12359	MW observés: 45-60 kDa	

Applications

Applications testées:

IHC, WB, ELISA

Demandes citées:

IF, IHC, WB

Spécificité de l'espèce:

Humain, porc, rat, souris

Espèces citées:

Humain, porc, rat, souris

Remarque-IHC: il est suggéré de démasquer l'antigène avec un tampon de TE buffer pH 9,0; (*) A défaut, 'le démasquage de l'antigène peut être 'effectué avec un tampon citrate pH 6,0.

Contrôles positifs:

WB : cellules PC-12, cellules Caco-2, cellules COLO 320, cellules HeLa, tissu cardiaque de porc, tissu cardiaque humain, tissu cérébral de porc, tissu cérébral de rat, tissu cérébral de souris, tissu cérébral humain foetal

IHC : tissu de cancer du sein humain, tissu de cancer du côlon humain, tissu de côlon de rat, tissu de côlon de souris

Informations générales

Matrix metalloproteinases (MMPs) play a critically important role in extracellular matrix remodeling and have been implicated in a number of key normal and pathologic processes. These proteases have come to represent important therapeutic and diagnostic targets for the treatment and detection of human cancers. MMP-3 activate procollagenase via two pathways: slow direct activation and rapid activation in conjunction with tissue or plasma proteinases. The pro-MMP3 (60 kDa) and the active MMP3 (47 kDa) can be detected through western blot.

Publications notables

Autrice	Pubmed ID	Journal	Application
Wenbin Pei	34650433	Front Pharmacol	WB
Weichao Sun	36102306	Int J Mol Med	WB,IHC,IF
Xin Liu	32914937	J Cell Mol Med	WB

Stockage

Stockage:

Stocker à -20°C. Stable pendant un an après l'expédition.

Tampon de stockage:

PBS avec azoture de sodium à 0,02 % et glycérol à 50 % pH 7,3

L'aliquotage n'est pas nécessaire pour le stockage à -20C

*** Les 20ul contiennent 0,1% de BSA.

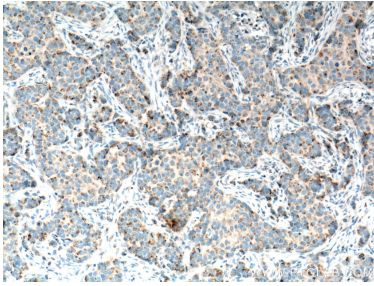
For technical support and original validation data for this product please contact:

T: 1 (888) 4PTGLAB (1-888-478-4522) (toll free in USA), or 1(312) 455-8498 (outside USA)

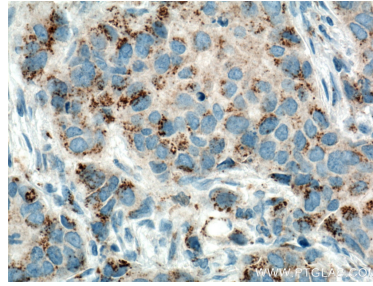
E: proteintech@ptglab.com
W: ptglab.com

This product is exclusively available under Proteintech Group brand and is not available to purchase from any other manufacturer.

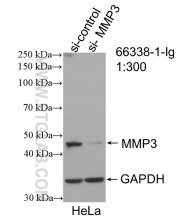
Données de validation sélectionnées



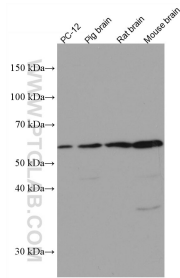
Immunohistochemical analysis of paraffin-embedded human breast cancer tissue slide using 66338-1-Ig (MMP3 antibody) at dilution of 1:4000 (under 10x lens. Heat mediated antigen retrieval with Tris-EDTA buffer (pH 9.0).



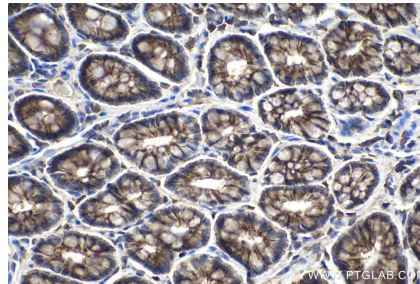
Immunohistochemical analysis of paraffin-embedded human breast cancer tissue slide using 66338-1-Ig (MMP3 antibody) at dilution of 1:4000 (under 40x lens. Heat mediated antigen retrieval with Tris-EDTA buffer (pH 9.0).



WB result of MMP3 antibody (66338-1-Ig; 1:300; incubated at room temperature for 1.5 hours) with sh-Control and sh-MMP3 transfected HeLa cells.



Various lysates were subjected to SDS PAGE followed by western blot with 66338-1-Ig (MMP3 antibody) at dilution of 1:10000 incubated at room temperature for 1.5 hours.



Immunohistochemical analysis of paraffin-embedded rat colon tissue slide using 66338-1-Ig (MMP3 antibody) at dilution of 1:4000 (under 40x lens). Heat mediated antigen retrieval with Tris-EDTA buffer (pH 9.0).