

À des fins de recherche uniquement

Anticorps Monoclonal anti-RAB5A

Numéro de catalogue: 66339-1-Ig **4 Publications**



Informations de base

Numéro de catalogue: 66339-1-Ig	Numéro d'acquisition GenBank: BC001267	Méthode de purification: Purification par protéine A
Taille: 150ul , Concentration: 2000 µg/ml by 5868 Nanodrop and 1000 µg/ml by Bradford method using BSA as the standard;	Identification du gène (NCBI): 5868	CloneNo.: 1B6A5
Hôte: Mouse	Nom complet: RAB5A, member RAS oncogene family	Dilutions recommandées: WB 1:1000-1:8000 IHC 1:50-1:500 IF 1:400-1:1600
Isotype: IgG2b	MW calculé: 215 aa, 24 kDa	
Immunogen Catalog Number: AG16781	MW observés: 24 kDa	

Applications

Applications testées:

IF, IHC, WB, ELISA

Demandes citées:

IF, WB

Spécificité de l'espèce:

Humain, porc

Espèces citées:

Humain

Remarque-IHC: il est suggéré de démasquer l'antigène avec un tampon de TE buffer pH 9,0; (*) A défaut, 'le démasquage de l'antigène peut être 'effectué avec un tampon citrate pH 6,0.

Contrôles positifs:

WB : cellules HEK-293, tissu cérébral de porc, tissu cérébral humain foetal

IHC : tissu de cancer du foie humain, tissu pancréatique humain

IF : cellules HepG2, cellules HeLa

Informations générales

Rab5a belongs to the Rab GTPases family proteins, which play roles in endocytosis, exocytosis, and vesicular transportation. Rab family proteins were recently reported to play important roles in human cancer progression. Rab5a was reported to be overexpressed in breast and ovarian cancers and associated with proliferation and invasion.

Publications notables

Autrice	Pubmed ID	Journal	Application
Kun Meng	32504010	Commun Biol	
Jin Wang	35386458	Bioact Mater	IF
Yoel Benarroch	33541739	Clin Ther	IF

Stockage

Stockage:

Stocker à -20°C. Stable pendant un an après l'expédition.

Tampon de stockage:

PBS avec azoture de sodium à 0,02 % et glycérol à 50 % pH 7,3

L'aliquotage n'est pas nécessaire pour le stockage à -20C

***** Les 20ul contiennent 0,1% de BSA.**

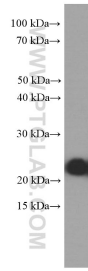
For technical support and original validation data for this product please contact:

T: 1 (888) 4PTGLAB (1-888-478-4522) (toll free in USA), or 1(312) 455-8498 (outside USA)

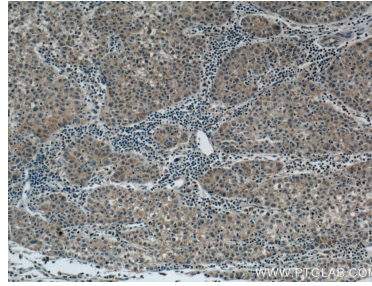
E: proteintech@ptglab.com
W: ptglab.com

This product is exclusively available under Proteintech Group brand and is not available to purchase from any other manufacturer.

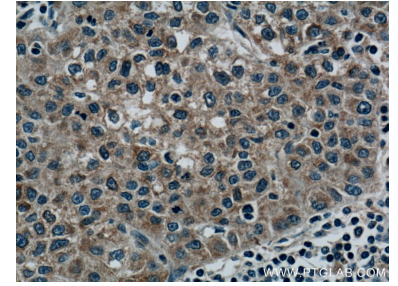
Données de validation sélectionnées



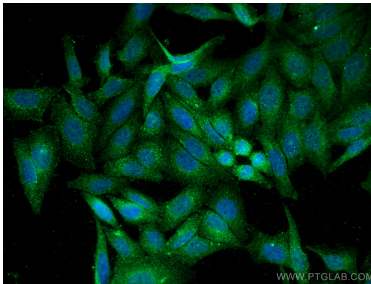
HEK-293 cells were subjected to SDS PAGE followed by western blot with 66339-1-Ig (RAB5A Antibody) at dilution of 1:4000 incubated at room temperature for 1.5 hours.



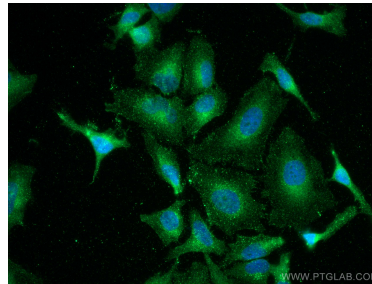
Immunohistochemical analysis of paraffin-embedded human liver cancer tissue slide using 66339-1-Ig (RAB5A Antibody) at dilution of 1:200 (under 10x lens). Heat mediated antigen retrieval with Tris-EDTA buffer (pH 9.0).



Immunohistochemical analysis of paraffin-embedded human liver cancer tissue slide using 66339-1-Ig (RAB5A Antibody) at dilution of 1:200 (under 40x lens). Heat mediated antigen retrieval with Tris-EDTA buffer (pH 9.0).



Immunofluorescent analysis of (4% PFA) fixed HepG2 cells using RAB5A antibody (66339-1-Ig, Clone: 1B6A5) at dilution of 1:800 and CoraLite®488-Conjugated AffiniPure Goat Anti-Mouse IgG(H+L).



Immunofluorescent analysis of (4% PFA) fixed HeLa cells using RAB5A antibody (66339-1-Ig, Clone: 1B6A5) at dilution of 1:800 and CoraLite®488-Conjugated AffiniPure Goat Anti-Mouse IgG(H+L).