

À des fins de recherche uniquement

Anticorps Monoclonal anti-CLIC4

Numéro de catalogue: 66343-1-Ig

Phare

1 Publications



Informations de base

Numéro de catalogue: 66343-1-Ig	Numéro d'acquisition GenBank: BC012444	Méthode de purification: Purification par protéine G
Taille: 150ul, Concentration: 2000 µg/ml by Nanodrop and 1000 µg/ml by Bradford method using BSA as the standard;	Identification du gène (NCBI): 25932	CloneNo.: 1B7F9
Hôte: Mouse	Nom complet: chloride intracellular channel 4	Dilutions recommandées: WB 1:1000-1:4000 IHC 1:50-1:500
Isotype: IgG1	MW calculé: 253 aa, 29 kDa	
Immunogen Catalog Number: AG2942	MW observés: 29 kDa	

Applications

Applications testées:

IHC, WB, ELISA

Demandes citées:

IF, WB

Spécificité de l'espèce:

Humain, porc, rat

Espèces citées:

rat

Remarque-IHC: il est suggéré de démasquer l'antigène avec un tampon de TE buffer pH 9,0; (*) A défaut, 'le démasquage de l'antigène peut être 'effectué avec un tampon citrate pH 6,0.

Contrôles positifs:

WB : tissu cardiaque humain, cellules HeLa, tissu cardiaque de porc, tissu rénal de porc, tissu rénal de rat

IHC : tissu cardiaque humain, tissu rénal humain

Informations générales

Chloride channels are a diverse group of proteins that regulate fundamental cellular processes including stabilization of cell membrane potential, transepithelial transport, maintenance of intracellular pH, and regulation of cell volume. CLIC4 is a p53- and tumor necrosis factor alpha-regulated cytoplasmic and mitochondrial protein that belongs to the CLIC family of intracellular chloride channels. CLICs have actions distinct from traditional cell membrane chloride channels, including formation of ion channels in intracellular organelles and roles in membrane trafficking, apoptosis, and cell differentiation.

Publications notables

Autrice	Pubmed ID	Journal	Application
Songhan Li	35498125	Oxid Med Cell Longev	WB,IF

Stockage

Stockage:

Stocker à -20°C. Stable pendant un an après l'expédition.

Tampon de stockage:

PBS avec azoture de sodium à 0,02 % et glycérol à 50 % pH 7,3

L'aliquotage n'est pas nécessaire pour le stockage à -20C

*** Les 20ul contiennent 0,1% de BSA.

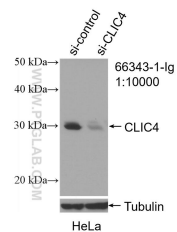
For technical support and original validation data for this product please contact:

T: 1 (888) 4PTGLAB (1-888-478-4522) (toll free in USA), or 1(312) 455-8498 (outside USA)

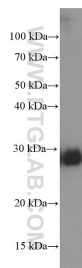
E: proteintech@ptglab.com
W: ptglab.com

This product is exclusively available under Proteintech Group brand and is not available to purchase from any other manufacturer.

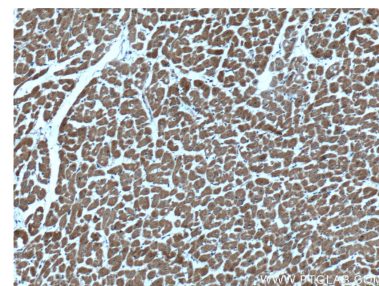
Données de validation sélectionnées



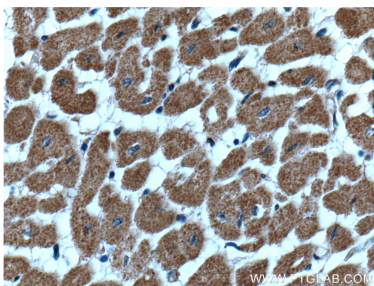
WB result of CLIC4 antibody (66343-1-Ig; 1:10000; incubated at room temperature for 1.5 hours) with sh-Control and sh-CLIC4 transfected HeLa cells.



human heart tissue were subjected to SDS PAGE followed by western blot with 66343-1-Ig (CLIC4 Antibody) at dilution of 1:2000 incubated at room temperature for 1.5 hours.



Immunohistochemical analysis of paraffin-embedded human heart tissue slide using 66343-1-Ig (CLIC4 Antibody) at dilution of 1:200 (under 10x lens).



Immunohistochemical analysis of paraffin-embedded human heart tissue slide using 66343-1-Ig (CLIC4 Antibody) at dilution of 1:200 (under 40x lens).