

À des fins de recherche uniquement

# Anticorps Monoclonal anti-Annexin A1



Numéro de catalogue: 66344-1-Ig

Phare

3 Publications

## Informations de base

Numéro de catalogue: 66344-1-Ig	Numéro d'acquisition GenBank: BC001275	Méthode de purification: Purification par protéine A
Taille: 150ul, Concentration: 1100 µg/ml by 301 Nanodrop and 1000 µg/ml by Bradford method using BSA as the standard;	Identification du gène (NCBI): 301	CloneNo.: 1E1B7
Hôte: Mouse	Nom complet: annexin A1	Dilutions recommandées: WB 1:5000-1:50000 IHC 1:50-1:500 IF 1:50-1:500
Isotype: IgG1	MW calculé: 346 aa, 39 kDa	
Immunogen Catalog Number: AG17273	MW observés: 35 kDa	

## Applications

Applications testées:  
FC, IF, IHC, WB, ELISA

Demandes citées:  
IF, IHC

Spécificité de l'espèce:  
Humain, rat, souris

Espèces citées:  
Humain

**Remarque-IHC: il est suggéré de démasquer l'antigène avec un tampon de TE buffer pH 9,0; (\*) A défaut, 'le démasquage de l'antigène peut être effectué avec un tampon citrate pH 6,0.**

Contrôles positifs:

WB : cellules A549, cellules 4T1, cellules A431, cellules HCT 116, cellules HeLa, cellules HepG2, cellules Jurkat, cellules K-562, cellules NIH/3T3

IHC : tissu d'estomac humain, tissu hépatique de souris, tissu pancréatique humain

IF : cellules A549,

## Informations générales

ANXA1, also named as ANX1, LPC1 and p35, belongs to the annexin family. It is a member of the annexin family of Ca<sup>2+</sup>-binding and phospholipidbinding proteins, and it is particularly abundant in various populations of peripheral blood leukocytes. ANXA1 regulates phospholipase A2 activity. It seems to bind from two to four calcium ions with high affinity. ANXA1 is a pleiotrophic protein produced by many cell types including peripheral blood leukocytes.

## Publications notables

Autrice	Pubmed ID	Journal	Application
Emna Ouni	35341935	Matrix Biol	IF
Bin Yan	35775939	J Mater Chem B	IHC
Maria Fankhaenel	36631478	Nat Commun	IF

## Stockage

Stockage:

Stocker à -20°C. Stable pendant un an après l'expédition.

Tampon de stockage:

PBS avec azoture de sodium à 0,02 % et glycérol à 50 % pH 7,3

L'aliquotage n'est pas nécessaire pour le stockage à -20C

\*\*\* Les 20ul contiennent 0,1% de BSA.

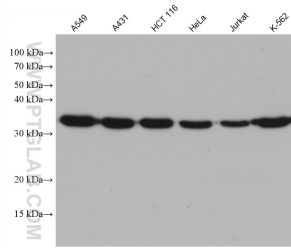
For technical support and original validation data for this product please contact:

T: 1 (888) 4PTGLAB (1-888-478-4522) (toll free in USA), or 1(312) 455-8498 (outside USA)

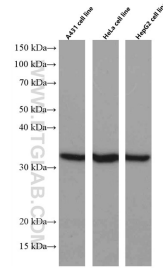
E: [proteintech@ptglab.com](mailto:proteintech@ptglab.com)  
W: [ptglab.com](http://ptglab.com)

This product is exclusively available under Proteintech Group brand and is not available to purchase from any other manufacturer.

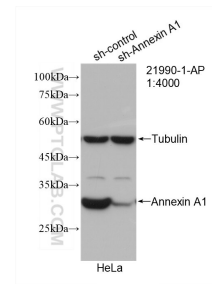
## Données de validation sélectionnées



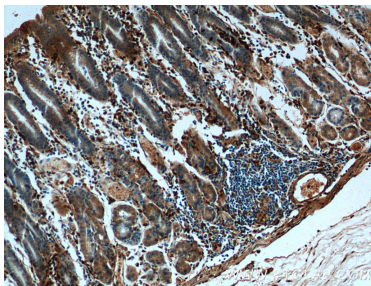
Various lysates were subjected to SDS PAGE followed by western blot with 66344-1-Ig (Annexin A1 antibody) at dilution of 1:20000 incubated at room temperature for 1.5 hours.



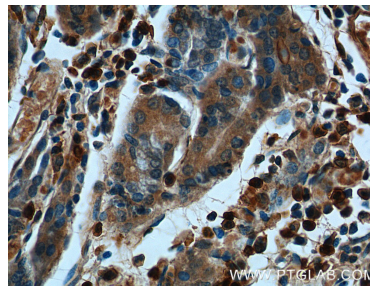
Various lysates were subjected to SDS PAGE followed by western blot with 66344-1-Ig (Annexin A1 antibody) at dilution of 1:5000 incubated at room temperature for 1.5 hours.



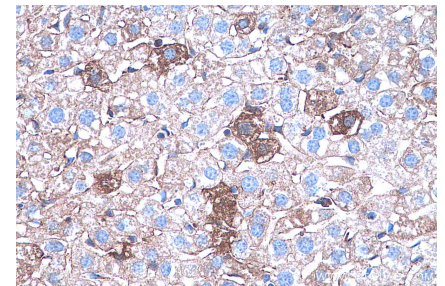
WB result of Annexin A1 antibody (66344-1-Ig; 1:3000; incubated at room temperature for 1.5 hours) with sh-Control and sh-Annexin A1 transfected HeLa cells.



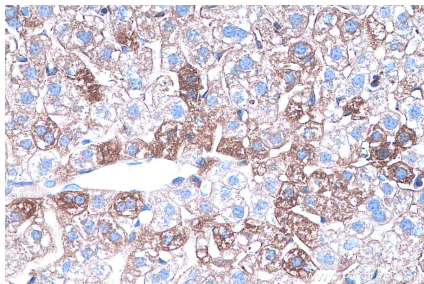
Immunohistochemical analysis of paraffin-embedded human stomach tissue slide using 66344-1-Ig (Annexin A1 antibody) at dilution of 1:200 (under 10x lens).



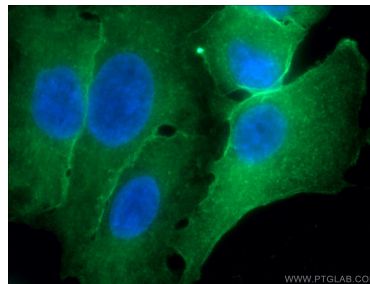
Immunohistochemical analysis of paraffin-embedded human stomach tissue slide using 66344-1-Ig (Annexin A1 antibody) at dilution of 1:200 (under 40x lens).



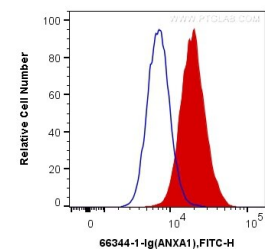
Immunohistochemical analysis of paraffin-embedded mouse liver tissue slide using 66344-1-Ig (Annexin A1 antibody) at dilution of 1:16000 (under 40x lens). Heat mediated antigen retrieval with Tris-EDTA buffer (pH 9.0).



Immunohistochemical analysis of paraffin-embedded mouse liver tissue slide using 66344-1-Ig (Annexin A1 antibody) at dilution of 1:16000 (under 40x lens). Heat mediated antigen retrieval with Tris-EDTA buffer (pH 9.0).



Immunofluorescent analysis of (-20°C Ethanol) fixed A549 cells using 66344-1-Ig (Annexin A1 antibody) at dilution of 1:100 and Alexa Fluor 488-conjugated AffiniPure Goat Anti-Mouse IgG(H+L).



$1 \times 10^6$  K-562 cells were intracellularly stained with 0.8  $\mu$ g Anti-Human Annexin A1 (66344-1-Ig, Clone:1E1B7) and CoraLite<sup>®</sup> 488-Conjugated AffiniPure Goat Anti-Mouse IgG(H+L) at dilution 1:1000 (red), or 0.8  $\mu$ g Mouse IgG1 Isotype Control (66360-1-Ig, Clone: T1F8D3F10) (blue). Cells were fixed with 4% PFA and permeabilized with Flow Cytometry Perm Buffer (PF00011-C).