

À des fins de recherche uniquement

# Anticorps Monoclonal anti-Dermatopontin



Numéro de catalogue: 66348-1-Ig

## Informations de base

Numéro de catalogue: 66348-1-Ig	Numéro d'acquisition GenBank: BC033736	Méthode de purification: Purification par protéine A
Taille: 150ul , Concentration: 1700 µg/ml by Nanodrop and 1000 µg/ml by Bradford method using BSA as the standard;	Identification du gène (NCBI): 1805	CloneNo.: 4B1A12
Hôte: Mouse	Nom complet: dermatopontin	Dilutions recommandées: WB 1:500-1:2000 IF 1:400-1:1600
Isotype: IgG2b	MW calculé: 22 kDa	
Immunogen Catalog Number: AG6200	MW observés: 26 kDa	

## Applications

Applications testées: IF, WB, ELISA	Contrôles positifs: WB : tissu cutané de rat, tissu testiculaire humain IF : cellules SH-SY5Y,
Spécificité de l'espèce: Humain, rat	

## Informations générales

DPT (dermatopontin) is an extracellular matrix protein belonging to the dermatopontin family. Skin appears to be the richest source of dermatopontin, comprising about 15 mg/kg of the wet weight. Expression of dermatopontin is not limited to connective tissue, as investigations show that dermatopontin mRNA is expressed in cultured fibroblasts, muscle, heart, pancreas, and lung. Dermatopontin comprises a considerable proportion of the noncollagenous extracellular matrix proteins. It is involved in promotion of cellular adhesion, extracellular matrix assembly, wound healing, and positive modification of the inhibition activity of TGF-beta1.

## Stockage

Stockage:  
Stocker à -20°C. Stable pendant un an après l'expédition.  
Tampon de stockage:  
PBS avec azoture de sodium à 0,02 % et glycérol à 50 % pH 7,3  
L'aliquotage n'est pas nécessaire pour le stockage à -20C

\*\*\* Les 20ul contiennent 0,1% de BSA.

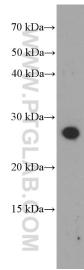
For technical support and original validation data for this product please contact:

T: 1 (888) 4PTGLAB (1-888-478-4522) (toll free in USA), or 1(312) 455-8498 (outside USA)

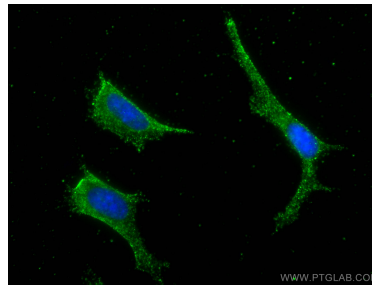
E: proteintech@ptglab.com  
W: ptglab.com

This product is exclusively available under Proteintech Group brand and is not available to purchase from any other manufacturer.

## Données de validation sélectionnées



rat skin tissue were subjected to SDS PAGE followed by western blot with 66348-1-Ig (Dermato pontin antibody at dilution of 1:1000 incubated at room temperature for 1.5 hours.



Immunofluorescent analysis of (-20°C Ethanol) fixed SH-SY5Y cells using Dermato pontin antibody (66348-1-Ig, Clone: 4B1A12 ) at dilution of 1:800 and CoraLite®488-Conjugated AffiniPure Goat Anti-Mouse IgG(H+L).