

À des fins de recherche uniquement

# Anticorps Monoclonal anti-CAPRIN 1

Numéro de catalogue: 66352-1-Ig



## Informations de base

Numéro de catalogue: 66352-1-Ig	Numéro d'acquisition GenBank: BC001731	Méthode de purification: Purification par protéine A
Taille: 150ul , Concentration: 900 µg/ml by Nanodrop and 740 µg/ml by Bradford method using BSA as the standard;	Identification du gène (NCBI): 4076	CloneNo.: 6B10F11
Hôte: Mouse	Nom complet: cell cycle associated protein 1	Dilutions recommandées: WB 1:5000-1:50000 IHC 1:500-1:2000 IF 1:50-1:500
Isotype: IgG1	MW calculé 78 kDa	
Immunogen Catalog Number: AG7413	MW observés: 116 kDa	

## Applications

Applications testées:  
FC, IF, IHC, WB, ELISA

Spécificité de l'espèce:  
Humain, rat, souris

**Remarque-IHC: il est suggéré de démasquer l'antigène avec un tampon de TE buffer pH 9.0; (\*) À défaut, le démasquage de l'antigène peut être effectué avec un tampon citrate pH 6,0.**

Contrôles positifs:

WB : cellules LNCaP, cellules HEK-293, cellules HeLa, cellules HepG2, cellules HSC-T6, cellules Jurkat, cellules K-562, cellules NIH/3T3

IHC : tissu de cancer du sein humain, tissu cérébral de souris, tissu de cancer de la prostate humaine

IF : cellules HeLa,

## Informations générales

CAPRIN1(Caprin-1) is a cytoplasmic phosphoprotein which may regulate the transport and translation of mRNAs of proteins involved in synaptic plasticity in neurons and cell proliferation and migration in multiple cell types. Its levels, except in the brain, are tightly correlated with cellular proliferation. Suppression of expression of human Caprin-1 resulted in slowing of the proliferation rate, which suggests its essential for normal cellular proliferation.

## Stockage

Stockage:

Stocker à -20°C. Stable pendant un an après l'expédition.

Tampon de stockage:

PBS avec azote de sodium à 0,02 % et glycérol à 50 % pH 7,3

L'aliquotage n'est pas nécessaire pour le stockage à -20C

\*\*\* Les 20ul contiennent 0,1% de BSA.

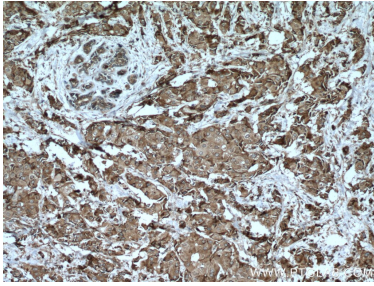
For technical support and original validation data for this product please contact:

T: 1 (888) 4PTGLAB (1-888-478-4522) (toll free in USA), or 1(312) 455-8498 (outside USA)

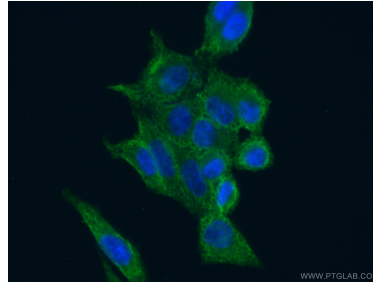
E: proteintech@ptglab.com  
W: ptglab.com

This product is exclusively available under Proteintech Group brand and is not available to purchase from any other manufacturer.

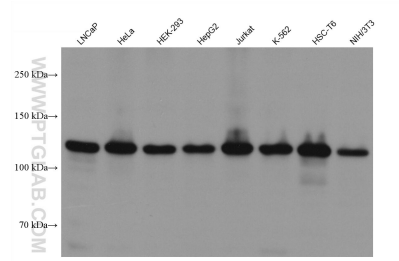
## Données de validation sélectionnées



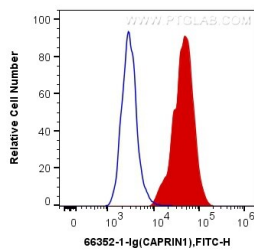
Immunohistochemical analysis of paraffin-embedded human breast cancer tissue slide using 66352-1-Ig (CAPRIN1 antibody) at dilution of 1:1000 (under 10x lens). Heat mediated antigen retrieval with Tris-EDTA buffer (pH 9.0).



Immunofluorescent analysis of (4% PFA) fixed HeLa cells using 66352-1-Ig (CAPRIN1 antibody) at dilution of 1:100 and Alexa Fluor 488-conjugated AffiniPure Goat Anti-Mouse IgG(H+L).



Various lysates were subjected to SDS PAGE followed by western blot with 66352-1-Ig (CAPRIN1 antibody) at dilution of 1:20000 incubated at room temperature for 1.5 hours.



1X10<sup>6</sup> NIH/3T3 cells were intracellularly stained with 0.2 ug Anti-Human CAPRIN1 (66352-1-Ig, Clone:6B10F11) (red), or 0.2 ug Control Antibody. Cells were fixed with 4% PFA and permeabilized with Flow Cytometry Perm Buffer (PF00011-C).