

À des fins de recherche uniquement

# Anticorps Monoclonal anti-CBLB

Numéro de catalogue: 66353-1-Ig



## Informations de base

Numéro de catalogue: 66353-1-Ig	Numéro d'acquisition GenBank: BC032851	Méthode de purification: Purification par protéine A
Taille: 150ul , Concentration: 1500 µg/ml by Nanodrop and 1000 µg/ml by Bradford method using BSA as the standard;	Identification du gène (NCBI): 868	CloneNo.: 2D3A2
Hôte: Mouse	Nom complet: Cas-Br-M (murine) ecotropic retroviral transforming sequence b	Dilutions recommandées: WB 1:500-1:2000 IHC 1:100-1:400 IF 1:50-1:500
Isotype: IgG3	MW calculé 982 aa, 109 kDa	
Immunogen Catalog Number: AG18757	MW observés: 110 kDa	

## Applications

### Applications testées:

IF, IHC, WB, ELISA

### Spécificité de l'espèce:

Humain, porc, rat, souris

**Remarque-IHC: il est suggéré de démasquer l'antigène avec un tampon de TE buffer pH 9.0; (\*) À défaut, le démasquage de l'antigène peut être effectué avec un tampon citrate pH 6,0.**

### Contrôles positifs:

WB : cellules RAW 264.7, tissu cardiaque de rat

IHC : tissu cardiaque humain, tissu testiculaire humain

IF : cellules RAW 264.7,

## Informations générales

CBLB(E3 ubiquitin-protein ligase CBL-B) is also known as RNF56 and plays a necessary role to prevent the inappropriate activation of NF-B in response to lipopolysaccharide and to polymicrobial sepsis. CBLB can be phosphorylated on tyrosine and serine residues upon TCR or BCR activation, and upon various types of cell stimulation. It also has a crucial role in the prevention of chronic inflammation and autoimmunity. This protein has 3 isoforms produced by alternative splicing.

## Stockage

### Stockage:

Stocker à -20°C. Stable pendant un an après l'expédition.

### Tampon de stockage:

PBS avec azoture de sodium à 0,02 % et glycérol à 50 % pH 7,3

L'aliquotage n'est pas nécessaire pour le stockage à -20C

\*\*\* Les 20ul contiennent 0,1% de BSA.

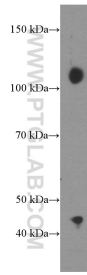
For technical support and original validation data for this product please contact:

T: 1 (888) 4PTGLAB (1-888-478-4522) (toll free  
in USA), or 1(312) 455-8498 (outside USA)

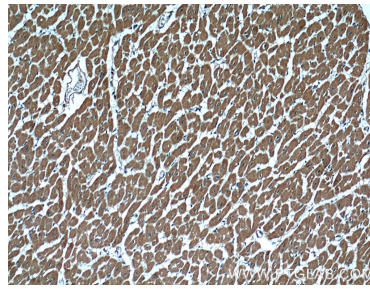
E: proteintech@ptglab.com  
W: ptglab.com

This product is exclusively available under Proteintech Group brand and is not available to purchase from any other manufacturer.

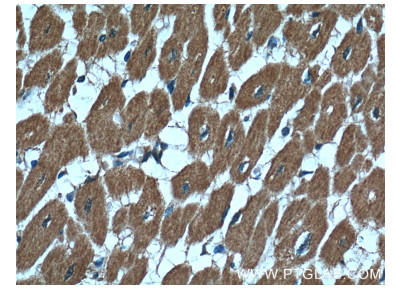
## Données de validation sélectionnées



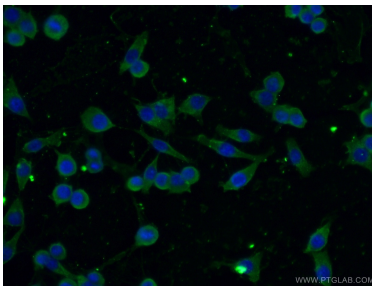
RAW 264.7 cells were subjected to SDS PAGE followed by western blot with 66353-1-Ig (CBLB Antibody) at dilution of 1:1000 incubated at room temperature for 1.5 hours.



Immunohistochemical analysis of paraffin-embedded human heart tissue slide using 66353-1-Ig (CBLB Antibody) at dilution of 1:200 (under 10x lens).



Immunohistochemical analysis of paraffin-embedded human heart tissue slide using 66353-1-Ig (CBLB Antibody) at dilution of 1:200 (under 40x lens).



Immunofluorescent analysis of (-20°C Ethanol ) fixed RAW 264.7 cells using 66353-1-Ig(CBLB antibody) at dilution of 1:100 and Alexa Fluor 488-conjugated AffiniPure Goat Anti-Mouse IgG(H+L).