

À des fins de recherche uniquement

# Anticorps Monoclonal anti-BRE

Numéro de catalogue: 66356-1-Ig



## Informations de base

Numéro de catalogue: 66356-1-Ig	Numéro d'acquisition GenBank: BC001251	Méthode de purification: Purification par protéine A
Taille: 150ul, Concentration: 1800 µg/ml by Nanodrop and 1000 µg/ml by Bradford method using BSA as the standard;	Identification du gène (NCBI): 9577	CloneNo.: 2E5A5
Hôte: Mouse	Nom complet: brain and reproductive organ- expressed (TNFRSF1A modulator)	Dilutions recommandées: WB 1:500-1:2000 IHC 1:50-1:500 IF 1:50-1:500
Isotype: IgG2a	MW calculé 383 aa, 44 kDa	
Immunogen Catalog Number: AG2256	MW observés: 42-47 kDa	

## Applications

### Applications testées:

IF, IHC, WB, ELISA

### Spécificité de l'espèce:

Humain, rat, souris

**Remarque-IHC: il est suggéré de démasquer l'antigène avec un tampon de TE buffer pH 9.0; (\*) À défaut, le démasquage de l'antigène peut être effectué avec un tampon citrate pH 6.0.**

### Contrôles positifs:

WB : tissu cérébral humain fœtal, tissu cérébral de rat

IHC : tissu cérébral de souris, tissu de gliome humain

IF : tissu cérébral de souris,

## Informations générales

BRE, also named as BRCC45, is a death receptor-associated antiapoptotic protein, which is also involved in DNA-damage repair, and K63-specific deubiquitination. BRE and its XIAP-sustaining mechanism could represent novel targets for anti-cancer therapy. BRE may regulate TNF- $\alpha$  signaling through its interactions with TNFRSF1A. It plays a role in homeostasis or cellular differentiation in cells of neural, epithelial and germline origins. BRE gene has four isoforms with MW 42-47 kDa.

## Stockage

### Stockage:

Stocker à -20°C. Stable pendant un an après l'expédition.

### Tampon de stockage:

PBS avec azoture de sodium à 0,02 % et glycérol à 50 % pH 7,3

L'aliquotage n'est pas nécessaire pour le stockage à -20C

\*\*\* Les 20ul contiennent 0,1% de BSA.

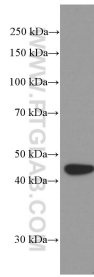
For technical support and original validation data for this product please contact:

T: 1 (888) 4PTGLAB (1-888-478-4522) (toll free  
in USA), or 1(312) 455-8498 (outside USA)

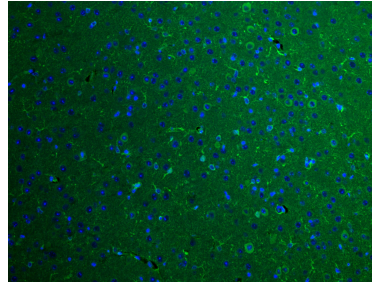
E: proteintech@ptglab.com  
W: ptglab.com

This product is exclusively available under Proteintech Group brand and is not available to purchase from any other manufacturer.

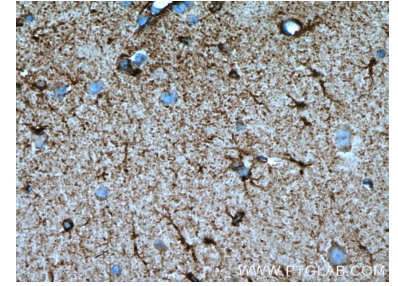
## Données de validation sélectionnées



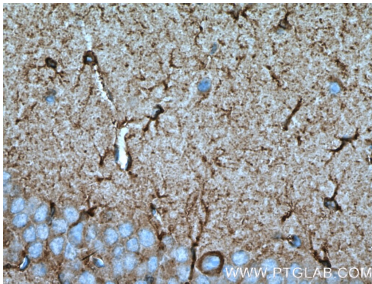
fetal human brain tissue were subjected to SDS PAGE followed by western blot with 66356-1-Ig (BRE Antibody) at dilution of 1:1000 incubated at room temperature for 1.5 hours.



Immunofluorescent analysis of (4% PFA) fixed mouse brain tissue using BRE antibody (66356-1-Ig, Clone: 2E5A5 ) at dilution of 1:200 and CoraLite®488-Conjugated AffiniPure Goat Anti-Mouse IgG(H+L).



Immunohistochemical analysis of paraffin-embedded mouse brain tissue slide using 66356-1-Ig (BRE Antibody) at dilution of 1:200 (under 10x lens). Heat mediated antigen retrieval with Tris-EDTA buffer (pH 9.0).



Immunohistochemical analysis of paraffin-embedded mouse brain tissue slide using 66356-1-Ig (BRE Antibody) at dilution of 1:200 (under 40x lens). Heat mediated antigen retrieval with Tris-EDTA buffer (pH 9.0).