

À des fins de recherche uniquement

Anticorps Monoclonal anti-Cyclin D3



Numéro de catalogue: 66357-1-Ig Phare

Informations de base

Numéro de catalogue: 66357-1-Ig	Numéro d'acquisition GenBank: BC011616	Méthode de purification: Purification par protéine G
Taille: 150ul , Concentration: 1400 µg/ml by Nanodrop and 1000 µg/ml by Bradford method using BSA as the standard;	Identification du gène (NCBI): cyclin D3	CloneNo.: 1F2C6
Hôte: Mouse	Nom complet: cyclin D3	Dilutions recommandées: WB 1:1000-1:8000 IHC 1:50-1:500
Isotype: IgG1	MW calculé 33 kDa	
Immunogen Catalog Number: AG22825	MW observés: 33-35 kDa	

Applications

Applications testées:
IHC, WB, ELISA

Spécificité de l'espèce:
Humain

Remarque-IHC: il est suggéré de démasquer l'antigène avec un tampon de TE buffer pH 9,0; (*) À défaut, le démasquage de l'antigène peut être effectué avec un tampon citrate pH 6,0.

Contrôles positifs:

WB : cellules Raji, cellules HEK-293, cellules HL-60, cellules Jurkat, cellules K-562

IHC : tissu de cancer du pancréas humain,

Informations générales

Cyclin D3 belongs to the highly conserved cyclin family, whose members are characterized by a dramatic periodicity in protein abundance through the cell cycle. Cyclins function as regulators of CDK kinases. Different cyclins exhibit distinct expression and degradation patterns which contribute to the temporal coordination of each mitotic event. This cyclin forms a complex with and functions as a regulatory subunit of CDK4 or CDK6, whose activity is required for cell cycle G1/S transition. This protein has been shown to interact with and be involved in the phosphorylation of tumor suppressor protein Rb. The CDK4 activity associated with this cyclin was reported to be necessary for cell cycle progression through G2 phase into mitosis after UV radiation.

Stockage

Stockage:
Stocker à -20°C. Stable pendant un an après l'expédition.

Tampon de stockage:
PBS avec azoture de sodium à 0,02 % et glycérol à 50 % pH 7,3

L'aliquotage n'est pas nécessaire pour le stockage à -20C

*** Les 20ul contiennent 0,1% de BSA.

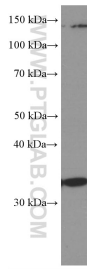
For technical support and original validation data for this product please contact:

T: 1 (888) 4PTGLAB (1-888-478-4522) (toll free in USA), or 1(312) 455-8498 (outside USA)

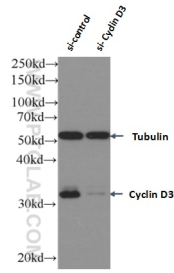
E: proteintech@ptglab.com
W: ptglab.com

This product is exclusively available under Proteintech Group brand and is not available to purchase from any other manufacturer.

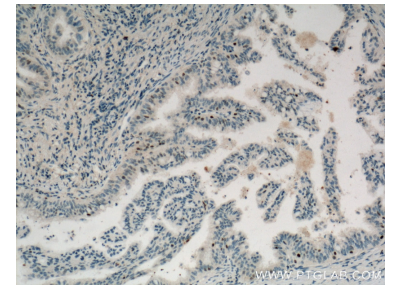
Données de validation sélectionnées



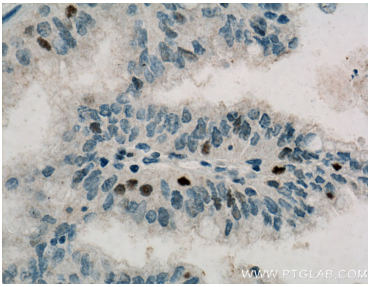
Raji cells were subjected to SDS PAGE followed by western blot with 66357-1-Ig (Cyclin D3 Antibody) at dilution of 1:4000 incubated at room temperature for 1.5 hours.



WB result of Cyclin D3 antibody (66357-1-Ig; 1:1500; incubated at room temperature for 1.5 hours) with sh-Control and sh-Cyclin D3 transfected Jurkat cells.



Immunohistochemical analysis of paraffin-embedded human pancreas cancer tissue slide using 66357-1-Ig (Cyclin D3 Antibody) at dilution of 1:200 (under 10x lens). Heat mediated antigen retrieval with Tris-EDTA buffer (pH 9.0).



Immunohistochemical analysis of paraffin-embedded human pancreas cancer tissue slide using 66357-1-Ig (Cyclin D3 Antibody) at dilution of 1:200 (under 40x lens). Heat mediated antigen retrieval with Tris-EDTA buffer (pH 9.0).