

À des fins de recherche uniquement

# Anticorps Monoclonal anti-POMC

Numéro de catalogue: 66358-1-Ig **9 Publications**



## Informations de base

Numéro de catalogue: 66358-1-Ig	Numéro d'acquisition GenBank: BC065832	Méthode de purification: Purification par protéine A
Taille: 150ul , Concentration: 1494 µg/ml by Nanodrop and 1000 µg/ml by Bradford method using BSA as the standard;	Identification du gène (NCBI): 5443	CloneNo.: 3C12C7
Hôte: Mouse	Nom complet: proopiomelanocortin	Dilutions recommandées: WB 1:1000-1:4000 IHC 1:1000-1:4000 IF 1:200-1:800
Isotype: IgG1	MW calculé: 267 aa, 29 kDa	
Immunogen Catalog Number: AG17311	MW observés: 35 kDa	

## Applications

Applications testées:  
FC, IF, IHC, WB, ELISA

Demandes citées:  
IF, IHC, WB

Spécificité de l'espèce:  
Humain, porc, rat, souris

Espèces citées:  
Humain, porc, rat, souris

**Remarque-IHC: il est suggéré de démasquer l'antigène avec un tampon de TE buffer pH 9,0; (\*) A défaut, 'le démasquage de l'antigène peut être effectué avec un tampon citrate pH 6,0.**

Contrôles positifs:

WB : tissu cérébral de porc, cellules A375, cellules HEK-293 transfectées, cellules PC-12, tissu cérébral de rat, tissu placentaire humain

IHC : tissu hypophysaire humain, tissu pancréatique de souris

IF : cellules HeLa,

## Informations générales

Pro-opiomelanocortin (POMC) is a prohormone that encodes multiple smaller peptide hormones within its structure. POMC plays important roles in many pathological and physiological processes, including regulating energy metabolism, immune reactions, and sexual functions. POMC expression differs quantitatively and qualitatively among most normal tissues. The large molecule of POMC is the source of several important biologically active substances. POMC can be cleaved enzymatically into the following peptides: d NPP,  $\gamma$ -MSH, ACTH,  $\alpha$ -MSH, CLIP, Lipotropin  $\beta$ , Lipotropin  $\gamma$ ,  $\beta$ -MSH,  $\beta$  endorphin and Met-enkephalin.

## Publications notables

Autrice	Pubmed ID	Journal	Application
Guangpin Chu	36387867	Front Endocrinol (Lausanne)	WB,IF
Lifang Zhang	34767244	Reprod Sci	IF
Joseph Walters	35537288	Biochem Biophys Res Commun	WB,IF

## Stockage

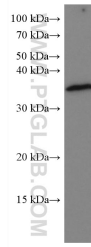
Stockage:  
Stocker à -20°C. Stable pendant un an après l'expédition.  
Tampon de stockage:  
PBS avec azoture de sodium à 0,02 % et glycérol à 50 % pH 7,3  
L'aliquotage n'est pas nécessaire pour le stockage à -20C

\*\*\* Les 20ul contiennent 0,1% de BSA.

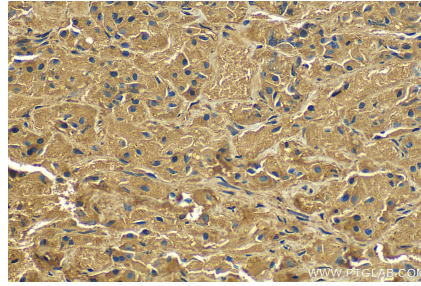
For technical support and original validation data for this product please contact:  
T: 1 (888) 4PTGLAB (1-888-478-4522) (toll free in USA), or 1(312) 455-8498 (outside USA)  
E: proteintech@ptglab.com  
W: ptglab.com

This product is exclusively available under Proteintech Group brand and is not available to purchase from any other manufacturer.

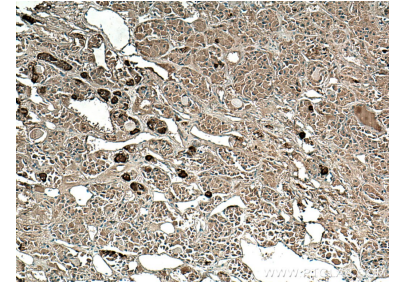
## Données de validation sélectionnées



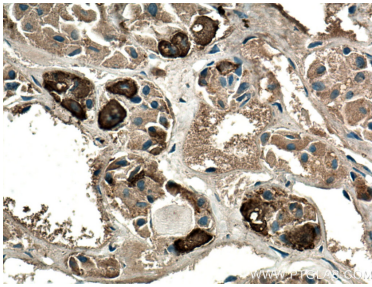
pig brain tissue were subjected to SDS PAGE followed by western blot with 66358-1-Ig (POMC antibody) at dilution of 1:2000 incubated at room temperature for 1.5 hours.



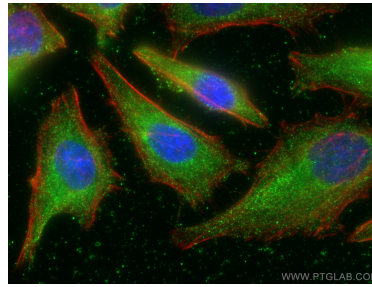
Immunohistochemical analysis of paraffin-embedded human pituitary tissue slide using 66358-1-Ig (POMC antibody) at dilution of 1:2000 (under 40x lens). Heat mediated antigen retrieval with Tris-EDTA buffer (pH 9.0).



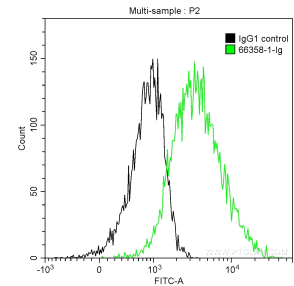
Immunohistochemical analysis of paraffin-embedded human pituitary tissue slide using 66358-1-Ig (POMC antibody) at dilution of 1:1000 (under 10x lens). Heat mediated antigen retrieval with Tris-EDTA buffer (pH 9.0).



Immunohistochemical analysis of paraffin-embedded human pituitary tissue slide using 66358-1-Ig (POMC antibody) at dilution of 1:1000 (under 40x lens). Heat mediated antigen retrieval with Tris-EDTA buffer (pH 9.0).



Immunofluorescent analysis of (-20°C Ethanol) fixed HeLa cells using POMC antibody (66358-1-Ig, Clone: 3C12C7) at dilution of 1:400 and Coralite®488-Conjugated AffiniPure Goat Anti-Mouse IgG(H+L), CL594-Phalloidin (red).



1X10<sup>6</sup> HeLa cells were intracellularly stained with 0.2 ug Anti-Human POMC (66358-1-Ig, Clone:3C12C7) and Coralite®488-Conjugated AffiniPure Goat Anti-Mouse IgG(H+L) at dilution 1:1000 (green), and 0.2 ug Mouse IgG1 Isotype Control (66360-1-Ig, Clone: T1F8D3F10) (black). Cells were fixed with 4% PFA and permeabilized with 0.1% TritonX-100.