

À des fins de recherche uniquement

# Anticorps Monoclonal anti-Mouse IgG1 isotype control



Numéro de catalogue: 66360-1-Ig **5 Publications**

## Informations de base

Numéro de catalogue:

66360-1-Ig

Numéro d'acquisition GenBank:

Identification du gène (NCBI):

Méthode de purification:

Purification par protéine A

Taille:

150ul , Concentration: 1000 µg/ml by Nanodrop;

Nom complet:

CloneNo.:

1F8D3

Hôte:

Mouse

Dilutions recommandées:

WB 1:500-1:2000

Isotype:

IgG1

## Applications

Applications testées:

FC, WB, ELISA

Contrôles positifs:

WB ; ,

Demandes citées:

CoIP, IHC, IP, RIP

Spécificité de l'espèce:

Megathura crenulata

## Informations générales

This antibody is used as the isotype control of mouse IgG1 (Kappa). It can be used as the isotype control in Flow Cytometry, Immuno-Precipitation and other experiments. The immunogen of this antibody is Keyhole Limpet Hemocyanin (KLH).

## Publications notables

Autrice	Pubmed ID	Journal	Application
Chujie Ding	35913801	FASEBJ	CoIP
Yuting Yang	34242624	Exp Cell Res	IP
Tomohiro Kawasumi	34989246	Am J Rhinol Allergy	IHC

## Stockage

Stockage:

Stocker à -20°C. Stable pendant un an après l'expédition.

Tampon de stockage:

PBS avec azoture de sodium à 0,02 % et glycérol à 50 % pH 7,3

L'aliquotage n'est pas nécessaire pour le stockage à -20C

**\*\*\* Les 20ul contiennent 0,1% de BSA.**

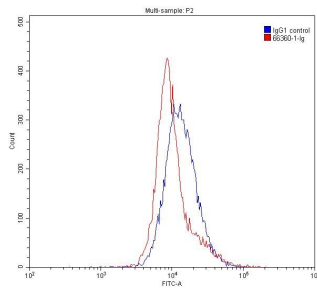
For technical support and original validation data for this product please contact:

T: 1 (888) 4PTGLAB (1-888-478-4522) (toll free in USA), or 1(312) 455-8498 (outside USA)

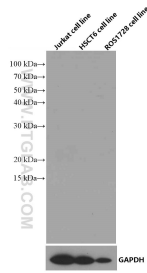
E: [proteintech@ptglab.com](mailto:proteintech@ptglab.com)  
W: [ptglab.com](http://ptglab.com)

This product is exclusively available under Proteintech Group brand and is not available to purchase from any other manufacturer.

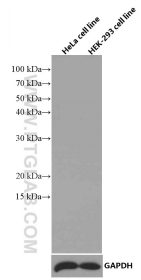
## Données de validation sélectionnées



1X10<sup>6</sup> K-562 cells were stained with 0.20ug Mouse IgG1 isotype control antibody (66360-1-Ig, red) and another control antibody (blue). Fixed with 90% MeOH.



Various lysates were subjected to SDS PAGE followed by western blot with 66360-1-Ig (Mouse IgG1 isotype control antibody) at dilution of 1:1000 incubated at room temperature for 1.5 hours.



Various lysates were subjected to SDS PAGE followed by western blot with 66360-1-Ig (Mouse IgG1 isotype control antibody) at dilution of 1:1000 incubated at room temperature for 1.5 hours.