

À des fins de recherche uniquement

# Anticorps Monoclonal anti-Mouse IgG2a isotype control



Numéro de catalogue: 66360-2-Ig **2 Publications**

## Informations de base

Numéro de catalogue:

66360-2-Ig

Taille:

150ul , Concentration: 1459 µg/ml by Nanodrop and 1000 µg/ml by Bradford method using BSA as the standard;

Hôte:

Mouse

Isotype:

IgG2a

Numéro d'acquisition GenBank:

Identification du gène (NCBI):

Nom complet:

Méthode de purification:

Purification par protéine A

CloneNo.:

11A1B2

Dilutions recommandées:

WB 1:500-1:2000

## Applications

Applications testées:

FC, WB, ELISA

Demandes citées:

FC, IP

Spécificité de l'espèce:

Megathura crenulata

Contrôles positifs:

WB ,

## Informations générales

This antibody is used as the isotype control of mouse IgG2a. It can be used as the isotype control in Flow Cytometry, Immuno-Precipitation and other experiments. The immunogen of this antibody is Keyhole Limpet Hemocyanin (KLH).

## Publications notables

Autrice	Pubmed ID	Journal	Application
Milan Hluchý	36104565	Nature	IP
Lei Wang	34218177	Biosens Bioelectron	FC

## Stockage

Stockage:

Stocker à -20°C. Stable pendant un an après l'expédition.

Tampon de stockage:

PBS avec azoture de sodium à 0,02 % et glycérol à 50 % pH 7,3

L'aliquotage n'est pas nécessaire pour le stockage à -20C

\*\*\* Les 20ul contiennent 0,1% de BSA.

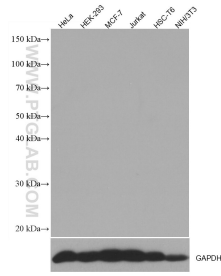
For technical support and original validation data for this product please contact:

T: 1 (888) 4PTGLAB (1-888-478-4522) (toll free in USA), or 1(312) 455-8498 (outside USA)

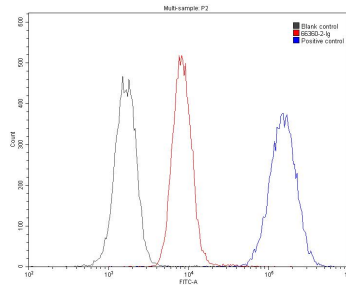
E: proteintech@ptglab.com  
W: ptglab.com

This product is exclusively available under Proteintech Group brand and is not available to purchase from any other manufacturer.

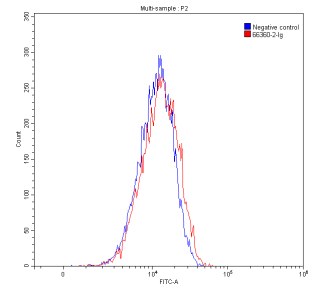
## Données de validation sélectionnées



Various lysates (50 µg/lane) were subjected to SDS PAGE followed by western blot with 66360-2-Ig (Mouse IgG2a isotype control antibody) at dilution of 1:1000 incubated at room temperature for 1.5 hours.



1X10<sup>6</sup> Jurkat cells were stained with 0.20µg Mouse IgG2a isotype control antibody (66360-2-Ig, red) or control antibody (blue). Fixed with 90% MeOH.



1X10<sup>6</sup> HeLa cells were stained with 0.20µg Mouse IgG2a isotype control antibody (66360-2-Ig, red) or control antibody (blue).