

À des fins de recherche uniquement

Anticorps Monoclonal anti-D2HGDH

Numéro de catalogue: 66364-1-Ig



Informations de base

Numéro de catalogue: 66364-1-Ig	Numéro d'acquisition GenBank: BC036604	Méthode de purification: Purification par protéine G
Taille: 150ul , Concentration: 1600 µg/ml by Nanodrop and 1000 µg/ml by Bradford method using BSA as the standard;	Identification du gène (NCBI): 728294	CloneNo.: 1E9B3
Hôte: Mouse	Nom complet: D-2-hydroxyglutarate dehydrogenase	Dilutions recommandées: WB 1:1000-1:8000 IHC 1:100-1:400 IF 1:200-1:800
Isotype: IgG1	MW calculé 521 aa, 56 kDa	
Immunogen Catalog Number: AG5036	MW observés: 56 kDa	

Applications

Applications testées:
FC, IF, IHC, WB, ELISA

Spécificité de l'espèce:
Humain, rat, souris

Remarque-IHC: il est suggéré de démasquer l'antigène avec un tampon de TE buffer pH 9,0; (*) À défaut, le démasquage de l'antigène peut être effectué avec un tampon citrate pH 6,0.

Contrôles positifs:

WB : cellules NIH/3T3, cellules C6, tissu cardiaque de rat

IHC : tissu de cancer du foie humain,

IF : cellules HepG2,

Informations générales

D2HGDH(D-2-hydroxyglutarate dehydrogenase, mitochondrial) is also named as D2HGD and belongs to the FAD-binding oxidoreductase/transferase type 4 family.It catalyzes the oxidation of D-2-hydroxyglutarate to alpha-ketoglutarate.Defects in D2HGDH are the cause of D-2-hydroxyglutaric aciduria type 1 (D2HGA1).

Stockage

Stockage:

Stocker à -20°C. Stable pendant un an après l'expédition.

Tampon de stockage:

PBS avec azoture de sodium à 0,02 % et glycérol à 50 % pH 7,3

L'aliquotage n'est pas nécessaire pour le stockage à -20C

*** Les 20ul contiennent 0,1% de BSA.

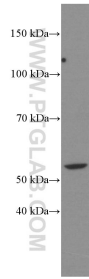
For technical support and original validation data for this product please contact:

T: 1 (888) 4PTGLAB (1-888-478-4522) (toll free in USA), or 1(312) 455-8498 (outside USA)

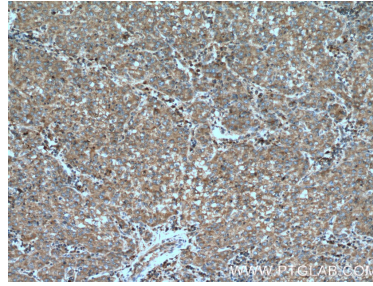
E: proteintech@ptglab.com
W: ptglab.com

This product is exclusively available under Proteintech Group brand and is not available to purchase from any other manufacturer.

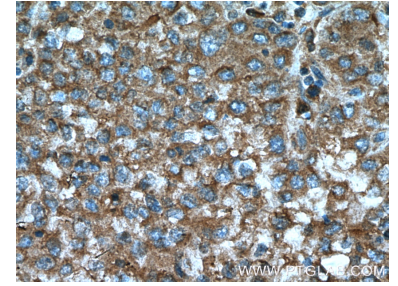
Données de validation sélectionnées



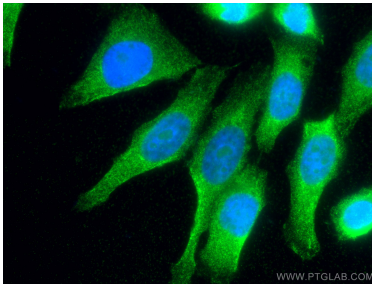
NIH/3T3 cells were subjected to SDS PAGE followed by western blot with 66364-1-Ig (D2HGDH Antibody) at dilution of 1:4000 incubated at room temperature for 1.5 hours.



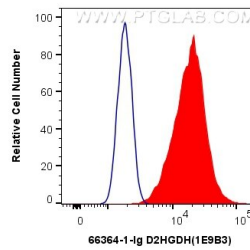
Immunohistochemical analysis of paraffin-embedded human liver cancer tissue slide using 66364-1-Ig (D2HGDH Antibody) at dilution of 1:200 (under 10x lens). Heat mediated antigen retrieval with Tris-EDTA buffer (pH 9.0).



Immunohistochemical analysis of paraffin-embedded human liver cancer tissue slide using 66364-1-Ig (D2HGDH Antibody) at dilution of 1:200 (under 40x lens). Heat mediated antigen retrieval with Tris-EDTA buffer (pH 9.0).



Immunofluorescent analysis of (4% PFA) fixed HepG2 cells using D2HGDH antibody (66364-1-Ig, Clone: 1E9B3) at dilution of 1:400 and CoraLite®488-Conjugated AffiniPure Goat Anti-Mouse IgG(H+L).



1×10^6 HepG2 cells were intracellularly stained with 0.4 μ g Anti-Human D2HGDH (66364-1-Ig, Clone: 1E9B3) and CoraLite®488-Conjugated AffiniPure Goat Anti-Mouse IgG(H+L) at dilution 1:1000 (red), or 0.4 μ g Control Antibody. Cells were fixed with 4% PFA and permeabilized with Flow Cytometry Perm Buffer (PF00011-C).