

À des fins de recherche uniquement

# Anticorps Monoclonal anti-MMP2

Numéro de catalogue: 66366-1-Ig

Phare

49 Publications



## Informations de base

Numéro de catalogue: 66366-1-Ig	Numéro d'acquisition GenBank: BC002576	Méthode de purification: Purification par protéine A
Taille: 150ul , Concentration: 1100 µg/ml by Nanodrop and 1000 µg/ml by Bradford method using BSA as the standard;	Identification du gène (NCBI): 4313	CloneNo.: 2B10D1
Hôte: Mouse	Nom complet: matrix metallopeptidase 2 (gelatinase A, 72kDa gelatinase, 72kDa type IV collagenase)	Dilutions recommandées: WB 1:1000-1:6000 IHC 1:150-1:600
Isotype: IgG1	MW calculé 72 kDa	
Immunogen Catalog Number: AG25039	MW observés: 55-74 kDa	

## Applications

### Applications testées:

IHC, WB, ELISA

### Demandes citées:

IF, IHC, WB

### Spécificité de l'espèce:

Humain, porc, rat, souris

### Espèces citées:

Humain, rat, souris

**Remarque-IHC: il est suggéré de démasquer l'antigène avec un tampon de TE buffer pH 9,0; (\*) A défaut, 'le démasquage de l'antigène peut être 'effectué avec un tampon citrate pH 6,0.**

### Contrôles positifs:

WB : cellules HepG2, cellules MCF-7, tissu cardiaque de porc, tissu cardiaque de rat, tissu cardiaque humain, tissu placentaire humain

IHC : tissu de cancer du sein humain,

## Informations générales

MMP2, also named as CLG4A, Gelatinase Am, TBE-1 and PEX, belongs to the peptidase M10A family. It is ubiquitous metalloproteinase that is involved in diverse functions such as remodeling of the vasculature, angiogenesis, tissue repair, tumor invasion, inflammation, and atherosclerotic plaque rupture. MMP2 contributes to myocardial oxidative stress by regulating the activity of GSK3beta. It cleaves GSK3beta in vitro. MMP2 can be cleaved into PEX chain (~60kd). Western blot analysis showed that the 72 kDa and 62 kDa proteinase activities were pro-MMP2 and the active enzyme, respectively (PMID:11112697).

## Publications notables

Autrice	Pubmed ID	Journal	Application
Wenjing Guo	33117682	Front Oncol	WB
Wei Zhou	34646828	Front Cell Dev Biol	WB
Yu-Feng Liu	34603071	Front Physiol	WB, IHC

## Stockage

### Stockage:

Stocker à -20°C. Stable pendant un an après l'expédition.

### Tampon de stockage:

PBS avec azoture de sodium à 0,02 % et glycérol à 50 % pH 7,3

L'aliquotage n'est pas nécessaire pour le stockage à -20C

\*\*\* Les 20ul contiennent 0,1% de BSA.

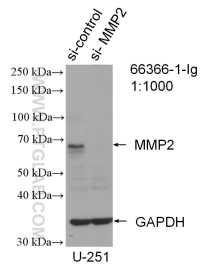
For technical support and original validation data for this product please contact:

T: 1 (888) 4PTGLAB (1-888-478-4522) (toll free in USA), or 1(312) 455-8498 (outside USA)

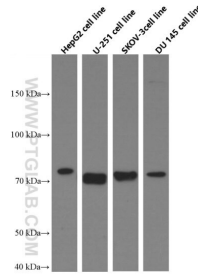
E: proteintech@ptglab.com  
W: ptglab.com

This product is exclusively available under Proteintech Group brand and is not available to purchase from any other manufacturer.

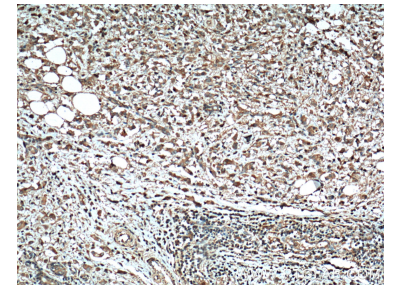
## Données de validation sélectionnées



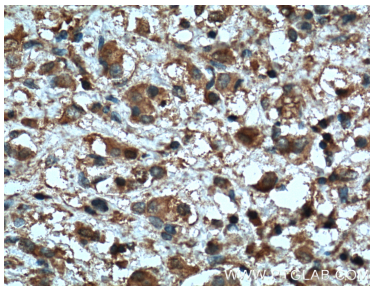
WB result of MMP2 antibody (66366-1-Ig; 1:1000; incubated at room temperature for 1.5 hours) with sh-Control and sh-MMP2 transfected U-251 cells.



Western blot analysis of MMP2 in various cell lines using Proteintech antibody 66366-1-Ig (MMP2 Antibody) at dilution of 1:3000 incubated at room temperature for 1.5 hours.



Immunohistochemical analysis of paraffin-embedded human breast cancer tissue slide using 66366-1-Ig (MMP2 antibody) at dilution of 1:300 (under 10x lens. Heat mediated antigen retrieval with Tris-EDTA buffer (pH 9.0).



Immunohistochemical analysis of paraffin-embedded human breast cancer tissue slide using 66366-1-Ig (MMP2 antibody) at dilution of 1:300 (under 40x lens. Heat mediated antigen retrieval with Tris-EDTA buffer (pH 9.0).