

À des fins de recherche uniquement

Anticorps Monoclonal anti-G6PD

Numéro de catalogue: 66373-1-Ig

Phare

7 Publications



Informations de base

Numéro de catalogue: 66373-1-Ig	Numéro d'acquisition GenBank: BC000337	Méthode de purification: Purification par protéine A
Taille: 150ul , Concentration: 2100 µg/ml by Nanodrop and 1000 µg/ml by Bradford method using BSA as the standard;	Identification du gène (NCBI): 2539	CloneNo.: 2A7B12
Hôte: Mouse	Nom complet: glucose-6-phosphate dehydrogenase	Dilutions recommandées: WB 1:5000-1:50000 IHC 1:100-1:400 IF 1:50-1:200
Isotype: IgG2a	MW calculé: 59 kDa	
Immunogen Catalog Number: AG21862	MW observés: 60 kDa	

Applications

Applications testées:

IF, IHC, WB, ELISA

Demandes citées:

IF, IHC, IP, WB

Spécificité de l'espèce:

Humain, rat, souris

Espèces citées:

Humain, rat, souris

Remarque-IHC: il est suggéré de démasquer l'antigène avec un tampon de TE buffer pH 9,0; (*) A défaut, 'le démasquage de l'antigène peut être 'effectué avec un tampon citrate pH 6,0.

Contrôles positifs:

WB : cellules HepG2, cellules HEK-293, cellules HeLa, cellules LO2, cellules NIH/3T3, tissu splénique de rat

IHC : tissu de cancer du foie humain,

IF : cellules HeLa,

Informations générales

G6PD (Glucose-6-phosphate 1-dehydrogenase) belongs to the glucose-6-phosphate dehydrogenase family. It is a housekeeping enzyme encoded in mammals by an X-linked gene. G6PD has important functions in intermediary metabolism because it catalyzes the first step in the pentose phosphate pathway and provides reductive potential in the form of NADPH. (PMID:7489710). This protein has 3 isoforms produced by alternative splicing.

Publications notables

Autrice	Pubmed ID	Journal	Application
Hongshuo Zhang	33101047	Front Physiol	WB
Ramon Martinez	33109619	J Pharmacol Exp Ther	WB
Yang Zhang	33159852	Cell Metab	IHC, IF, IP

Stockage

Stockage:

Stocker à -20°C. Stable pendant un an après l'expédition.

Tampon de stockage:

PBS avec azoture de sodium à 0,02 % et glycérol à 50 % pH 7,3

L'aliquotage n'est pas nécessaire pour le stockage à -20C

*** Les 20ul contiennent 0,1% de BSA.

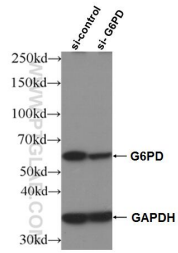
For technical support and original validation data for this product please contact:

T: 1 (888) 4PTGLAB (1-888-478-4522) (toll free in USA), or 1(312) 455-8498 (outside USA)

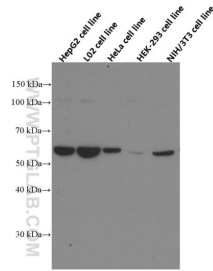
E: proteintech@ptglab.com
W: ptglab.com

This product is exclusively available under Proteintech Group brand and is not available to purchase from any other manufacturer.

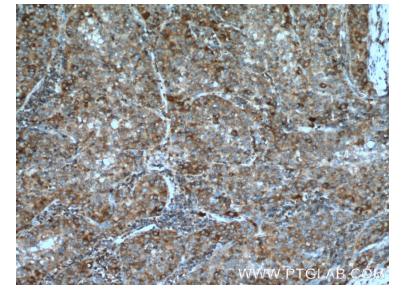
Données de validation sélectionnées



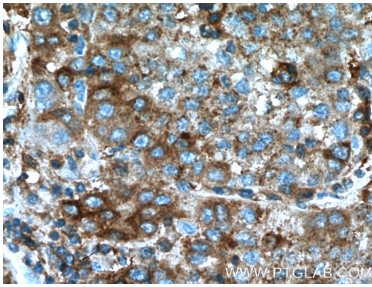
WB result of G6PD antibody (66373-1-Ig; 1:20000; incubated at room temperature for 1.5 hours) with sh-Control and sh-G6PD transfected HeLa cells.



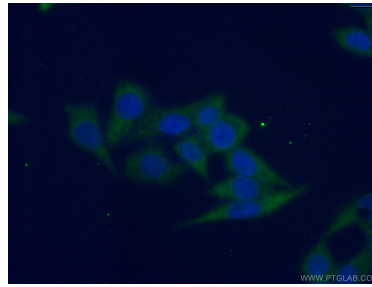
Several cell lines were subjected to SDS PAGE followed by western blot with 66373-1-Ig (G6PD Antibody) at dilution of 1:10000 incubated at room temperature for 1.5 hours.



Immunohistochemical analysis of paraffin-embedded human liver cancer tissue slide using 66373-1-Ig (G6PD Antibody) at dilution of 1:200 (under 10x lens). Heat mediated antigen retrieval with Tris-EDTA buffer (pH 9.0).



Immunohistochemical analysis of paraffin-embedded human liver cancer tissue slide using 66373-1-Ig (G6PD Antibody) at dilution of 1:200 (under 40x lens). Heat mediated antigen retrieval with Tris-EDTA buffer (pH 9.0).



Immunofluorescent analysis of (-20°C Ethanol) fixed HeLa cells using 66373-1-Ig(G6PD antibody) at dilution of 1:100 and Alexa Fluor 488-conjugated AffiniPure Goat Anti-Mouse IgG(H+L).