

À des fins de recherche uniquement

# Anticorps Monoclonal anti-Cardiac Troponin I



Numéro de catalogue: 66376-1-Ig **10 Publications**

## Informations de base

<b>Numéro de catalogue:</b> 66376-1-Ig	<b>Numéro d'acquisition GenBank:</b> BC096165	<b>Méthode de purification:</b> Purification par protéine G
<b>Taille:</b> 150ul , Concentration: 2000 µg/ml by Nanodrop and 1000 µg/ml by Bradford method using BSA as the standard;	<b>Identification du gène (NCBI):</b> 7137	<b>CloneNo.:</b> 1D5D6
<b>Hôte:</b> Mouse	<b>Nom complet:</b> troponin I type 3 (cardiac)	<b>Dilutions recommandées:</b> WB 1:5000-1:50000 IHC 1:50-1:500 IF 1:200-1:800
<b>Isotype:</b> IgG1	<b>MW calculé:</b> 210 aa, 24 kDa	
<b>Immunogen Catalog Number:</b> AG16758	<b>MW observés:</b> 26-28 kDa	

## Applications

### Applications testées:

IF, IHC, WB, ELISA

### Demandes citées:

IF, ISFET, WB

### Spécificité de l'espèce:

Humain, rat, souris

### Espèces citées:

Humain, porc, rat, souris

**Remarque-IHC: il est suggéré de démasquer l'antigène avec un tampon de TE buffer pH 9,0; (\*) A défaut, 'le démasquage de l'antigène peut être effectué avec un tampon citrate pH 6,0.**

### Contrôles positifs:

WB : tissu cardiaque humain, tissu cardiaque de lapin, tissu cardiaque de porc, tissu cardiaque de rat, tissu cardiaque de souris

IHC : tissu cardiaque humain, tissu cardiaque de souris

IF : tissu cardiaque de souris,

## Informations générales

Troponin I (TnI) is the inhibitory subunit of troponin, the structural protein involved in the regulation of striated muscle contraction. Cardiac Troponin I (cTnI) is produced by cardiac muscle. Two other TnI isoforms (slow sTnI and fast sTnI) are produced by slow-twitch and fast-twitch skeletal muscles, respectively. cTnI has been considered as one of the most specific and sensitive markers of myocardial damage like acute myocardial infarction (AMI) for decades. Detection of cTnI in serum is widely accepted as a diagnostic tool in acute coronary syndromes. This antibody is specific to cTnI, but not cross-react with skeletal TnI.

## Publications notables

Autrice	Pubmed ID	Journal	Application
Karthikeyan Thirugnanam	31718444	J Am Heart Assoc	IF
Anan Huang	35715868	Stem Cell Res Ther	IF
Chandong Ding	28962131	Exp Ther Med	

## Stockage

### Stockage:

Stocker à -20°C. Stable pendant un an après l'expédition.

### Tampon de stockage:

PBS avec azoture de sodium à 0,02 % et glycérol à 50 % pH 7,3

L'aliquotage n'est pas nécessaire pour le stockage à -20C

\*\*\* Les 20ul contiennent 0,1% de BSA.

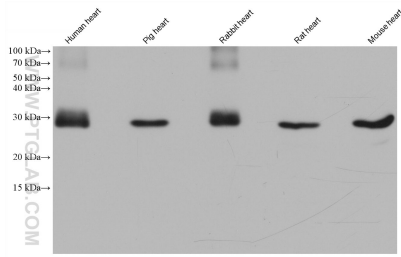
For technical support and original validation data for this product please contact:

T: 1 (888) 4PTGLAB (1-888-478-4522) (toll free in USA), or 1(312) 455-8498 (outside USA)

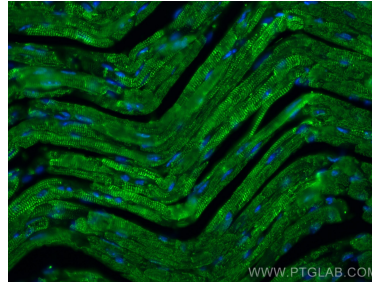
E: proteintech@ptglab.com  
W: ptglab.com

This product is exclusively available under Proteintech Group brand and is not available to purchase from any other manufacturer.

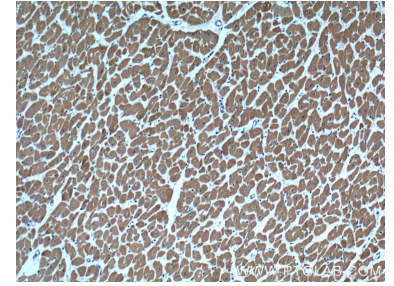
## Données de validation sélectionnées



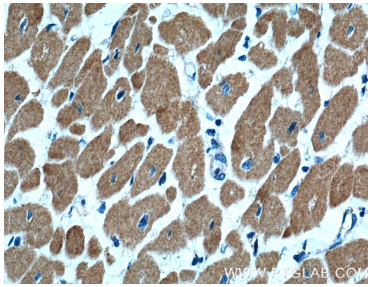
Various lysates were subjected to SDS PAGE followed by western blot with 66376-1-Ig (Cardiac Troponin I antibody) at dilution of 1:20000 incubated at room temperature for 1.5 hours.



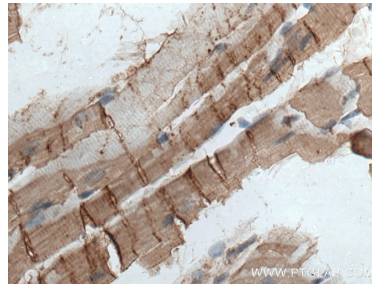
Immunofluorescent analysis of (4% PFA) fixed mouse heart tissue using Cardiac Troponin I antibody (66376-1-Ig, Clone: 1D5D6) at dilution of 1:400 and CoraLite®488-Conjugated AffiniPure Goat Anti-Mouse IgG(H+L).



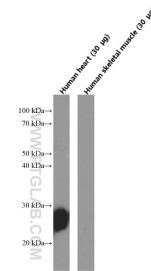
Immunohistochemical analysis of paraffin-embedded human heart tissue slide using 66376-1-Ig (Cardiac Troponin I antibody) at dilution of 1:600 (under 10x lens).



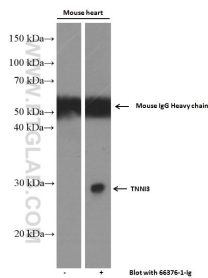
Immunohistochemical analysis of paraffin-embedded human heart tissue slide using 66376-1-Ig (Cardiac Troponin I antibody) at dilution of 1:600 (under 40x lens).



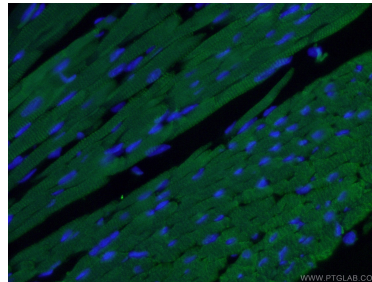
Immunohistochemical analysis of paraffin-embedded mouse heart tissue slide using 66376-1-Ig (Cardiac Troponin I antibody) at dilution of 1:2000 (under 40x lens. Heat mediated antigen retrieval with Tris-EDTA buffer (pH 9.0).



Human heart tissue and skeletal muscle tissue (negative control) were subjected to SDS PAGE followed by western blot with 66376-1-Ig (Cardiac Troponin I Antibody) at dilution of 1:20,000 incubated at room temperature for 1.5 hours.



Mouse heart tissue (6 ug/lane) was subjected to SDS PAGE followed by western blot with 66376-1-Ig (Cardiac Troponin I Antibody) at dilution of 1:5,000 incubated at room temperature for 1.5 hours.



Immunofluorescent analysis of (4% PFA) fixed mouse heart tissue using 66376-1-Ig (Cardiac Troponin I antibody) at dilution of 1:50 and Alexa Fluor 488-conjugated AffiniPure Goat Anti-Mouse IgG(H+L).