

À des fins de recherche uniquement

Anticorps Monoclonal anti-Occludin



Numéro de catalogue: 66378-1-Ig

Phare

55 Publications

Informations de base

Numéro de catalogue: 66378-1-Ig	Numéro d'acquisition GenBank: BC029886	Méthode de purification: Purification par protéine G
Taille: 150ul, Concentration: 1000 µg/ml by Nanodrop;	Identification du gène (NCBI): 4950	CloneNo.: 1D3C4
Hôte: Mouse	Nom complet: occludin	Dilutions recommandées: WB 1:5000-1:50000 IHC 1:50-1:500 IF 1:800-1:3200
Isotype: IgG1	MW calculé: 522 aa, 59 kDa	
Immunogen Catalog Number: AG4057	MW observés: 59 kDa	

Applications

Applications testées:

IF, IHC, WB, ELISA

Demandes citées:

IHC, WB

Spécificité de l'espèce:

Humain, porc, rat, souris

Espèces citées:

bovin, Humain, porc, rat, souris

Remarque-IHC: il est suggéré de démasquer l'antigène avec un tampon de TE buffer pH 9,0; (*) À défaut, 'le démasquage de l'antigène peut être 'effectué avec un tampon citrate pH 6,0.

Contrôles positifs:

WB : cellules HUVEC, cellules 4T1, cellules HEK-293, cellules Jurkat, cellules LNCaP, cellules U2OS, tissu de côlon de porc, tissu de côlon de rat, tissu de côlon de souris

IHC : tissu de cancer du côlon humain, tissu rénal de souris

IF : cellules Caco-2, cellules MCF-7

Informations générales

Occludin is an integral membrane protein located at the tight junction. It is a tetraspanin protein with four transmembrane domains, intracellular N and C termini and two extracellular loops. Occludin plays a role in the formation and regulation of the tight junction paracellular permeability barrier. Occludin can exist in different isoforms, owing to modifications at the posttranscriptional and posttranslational levels, the monomeric occludin migrates as 53-65 kDa on SDS-PAGE (PMID: 22083955; 19457074).

Publications notables

Autrice	Pubmed ID	Journal	Application
Dayun Feng	36179025	Sci Adv	WB
Yingying Wang	36174863	Int J Biol Macromol	WB,IF
Cantao Yang	36108982	Food Chem Toxicol	WB

Stockage

Stockage:

Stocker à -20°C. Stable pendant un an après l'expédition.

Tampon de stockage:

PBS avec azoture de sodium à 0,02 % et glycérol à 50 % pH 7,3

L'aliquotage n'est pas nécessaire pour le stockage à -20C

*** Les 20ul contiennent 0,1% de BSA.

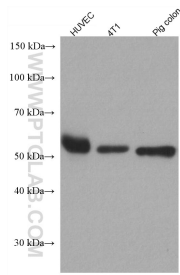
For technical support and original validation data for this product please contact:

T: 1 (888) 4PTGLAB (1-888-478-4522) (toll free in USA), or 1(312) 455-8498 (outside USA)

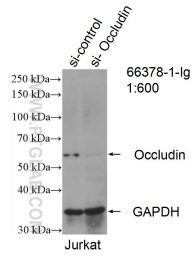
E: proteintech@ptglab.com
W: ptglab.com

This product is exclusively available under Proteintech Group brand and is not available to purchase from any other manufacturer.

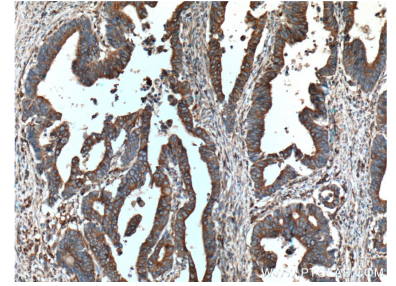
Données de validation sélectionnées



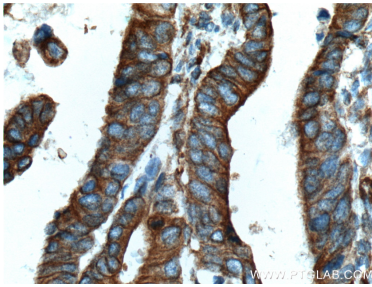
Various lysates were subjected to SDS PAGE followed by western blot with 66378-1-Ig (Occludin antibody) at dilution of 1:10000 incubated at room temperature for 1.5 hours.



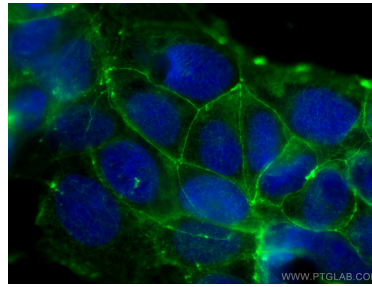
WB result of Occludin antibody (66378-1-Ig; 1:600; incubated at room temperature for 1.5 hours) with sh-Control and sh-Occludin transfected Jurkat cells.



Immunohistochemical analysis of paraffin-embedded human colon cancer tissue slide using 66378-1-Ig (Occludin antibody) at dilution of 1:400 (under 10x lens. Heat mediated antigen retrieval with Tris-EDTA buffer (pH 9.0).



Immunohistochemical analysis of paraffin-embedded human colon cancer tissue slide using 66378-1-Ig (Occludin antibody) at dilution of 1:400 (under 40x lens. Heat mediated antigen retrieval with Tris-EDTA buffer (pH 9.0).



Immunofluorescent analysis of (-20°C Ethanol) fixed Caco-2 cells using Occludin antibody (66378-1-Ig, Clone: 1D3C4) at dilution of 1:1600 and Coralite® 488-Conjugated AffiniPure Goat Anti-Mouse IgG(H+L).