

À des fins de recherche uniquement

Anticorps Monoclonal anti-Cyclin A2



Numéro de catalogue: 66391-1-Ig

Phare

20 Publications

Informations de base

Numéro de catalogue: 66391-1-Ig	Numéro d'acquisition GenBank: BC104783	Méthode de purification: Purification par protéine A
Taille: 150ul, Concentration: 1400 µg/ml by 890 Nanodrop and 1000 µg/ml by Bradford method using BSA as the standard;	Identification du gène (NCBI): cyclin A2	CloneNo.: 1C6C11
Hôte: Mouse	Nom complet: cyclin A2	Dilutions recommandées: WB 1:2000-1:10000 IHC 1:1000-1:4000 IF 1:50-1:500
Isotype: IgG2a	MW calculé: 432 aa, 49 kDa	
Immunogen Catalog Number: AG12765	MW observés: 52 kDa	

Applications

Applications testées:

IF, IHC, WB, ELISA

Demandes citées:

IF, WB

Spécificité de l'espèce:

Humain

Espèces citées:

Humain, rat, souris

Remarque-IHC: il est suggéré de démasquer l'antigène avec un tampon de TE buffer pH 9,0; (*) A défaut, 'le démasquage de l'antigène peut être effectué avec un tampon citrate pH 6,0.

Contrôles positifs:

WB : cellules HepG2, cellules HEK-293, cellules HeLa, cellules Jurkat, cellules Raji

IHC : tissu d'amygdalite humain,

IF : cellules HeLa, cellules MCF-7

Informations générales

CCNA2 belongs to the highly conserved cyclin family, whose members are characterized by a dramatic periodicity in protein abundance through the cell cycle. Cyclins function as regulators of CDK kinases. Different cyclins exhibit distinct expression and degradation patterns which contribute to the temporal coordination of each mitotic event. In contrast to cyclin A1, which is present only in germ cells, this cyclin is expressed in all tissues tested. CCNA2 binds and activates CDC2 or CDK2 kinases, and thus promotes both cell cycle G1/S and G2/M transitions.

Publications notables

Autrice	Pubmed ID	Journal	Application
Y Zhong	28869606	Oncogene	WB
Dianbao Zhang	33076708	Nutr Cancer	WB
Jingwen Tan	36208777	Chem Biol Interact	WB

Stockage

Stockage:

Stocker à -20°C. Stable pendant un an après l'expédition.

Tampon de stockage:

PBS avec azoture de sodium à 0,02 % et glycérol à 50 % pH 7,3

L'aliquotage n'est pas nécessaire pour le stockage à -20C

*** Les 20ul contiennent 0,1% de BSA.

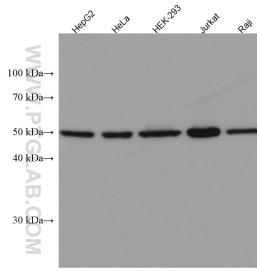
For technical support and original validation data for this product please contact:

T: 1 (888) 4PTGLAB (1-888-478-4522) (toll free in USA), or 1(312) 455-8498 (outside USA)

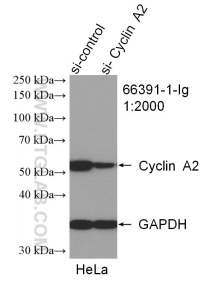
E: proteintech@ptglab.com
W: ptglab.com

This product is exclusively available under Proteintech Group brand and is not available to purchase from any other manufacturer.

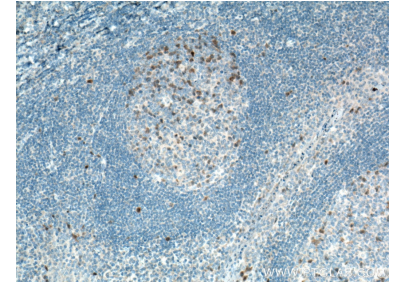
Données de validation sélectionnées



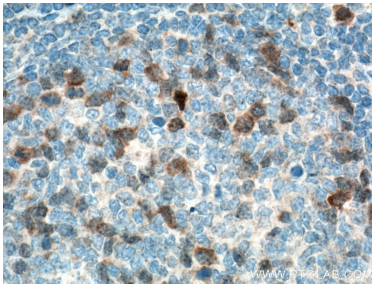
Various lysates were subjected to SDS PAGE followed by western blot with 66391-1-Ig (Cyclin A2 antibody) at dilution of 1:10000 incubated at room temperature for 1.5 hours.



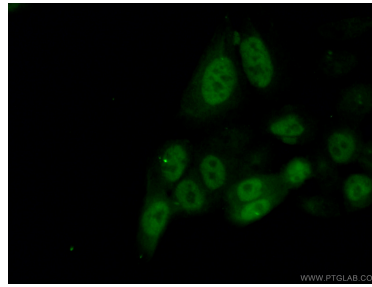
WB result of Cyclin A2 antibody (66391-1-Ig; 1:2000; incubated at room temperature for 1.5 hours) with sh-Control and sh-Cyclin A2 transfected HeLa cells.



Immunohistochemical analysis of paraffin-embedded human tonsillitis tissue slide using 66391-1-Ig (Cyclin A2 antibody) at dilution of 1:2000 (under 10x lens. Heat mediated antigen retrieval with Tris-EDTA buffer (pH 9.0).



Immunohistochemical analysis of paraffin-embedded human tonsillitis tissue slide using 66391-1-Ig (Cyclin A2 antibody) at dilution of 1:2000 (under 40x lens. Heat mediated antigen retrieval with Tris-EDTA buffer (pH 9.0).



Immunofluorescent analysis of (4% PFA) fixed HeLa cells using 66391-1-Ig(Cyclin A2 antibody) at dilution of 1:100 and Alexa Fluor 488-conjugated AffiniPure Goat Anti-Mouse IgG(H+L).