

À des fins de recherche uniquement

Anticorps Monoclonal anti-CD36

Numéro de catalogue: 66395-1-Ig **12 Publications**



Informations de base

Numéro de catalogue: 66395-1-Ig	Numéro d'acquisition GenBank: BC008406	Méthode de purification: Purification par protéine G
Taille: 150ul , Concentration: 1200 µg/ml by 948 Nanodrop and 1000 µg/ml by Bradford method using BSA as the standard;	Identification du gène (NCBI): 948	CloneNo.: 1A8C5
Hôte: Mouse	Nom complet: CD36 molecule (thrombospondin receptor)	Dilutions recommandées: WB 1:1000-1:6000 IHC 1:500-1:2000
Isotype: IgG1	MW calculé 472 aa, 53 kDa	
Immunogen Catalog Number: AG13541	MW observés: 88 kDa	

Applications

Applications testées:

FC, IHC, WB, ELISA

Demandes citées:

IF, IHC, WB

Spécificité de l'espèce:

Humain

Espèces citées:

Humain

Remarque-IHC: il est suggéré de démasquer l'antigène avec un tampon de TE buffer pH 9,0; (*) A défaut, 'le démasquage de l'antigène peut être 'effectué avec un tampon citrate pH 6,0.

Contrôles positifs:

WB : tissu cardiaque humain, lait humain, tissu placentaire humain, tissu splénique humain

IHC : tissu splénique humain, tissu cardiaque humain

Informations générales

CD36, also named as GP3B and GP4, is an 88-kDa membrane glycoprotein present on platelets, monocytes, erythroid precursors, endothelial cells, and several tumor cell lines. CD36 binds to collagen, thrombospondin, anionic phospholipids, long chain fatty acids and may function in the transport and/or as a regulator of fatty acid transport and oxidized LDL. CD36 may function as a cell adhesion molecule. It mediates cytoadherence of Plasmodium falciparum parasitized erythrocytes. Mutation of CD36 will cause platelet glycoprotein IV deficiency which known as CD36 deficiency. Genetic variations in CD36 are associated with susceptibility to coronary heart disease type 7 (CHDS7).

Publications notables

Autrice	Pubmed ID	Journal	Application
Yan Cao	34599913	Eur J Pharmacol	WB
Simon Riis	31430404	Scand J Med Sci Sports	IHC
Chenxi Liang	35656026	Oxid Med Cell Longev	WB

Stockage

Stockage:

Stocker à -20°C. Stable pendant un an après l'expédition.

Tampon de stockage:

PBS avec azoture de sodium à 0,02 % et glycérol à 50 % pH 7,3

L'aliquoteage n'est pas nécessaire pour le stockage à -20C

*** Les 20ul contiennent 0,1% de BSA.

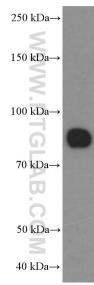
For technical support and original validation data for this product please contact:

T: 1 (888) 4PTGLAB (1-888-478-4522) (toll free in USA), or 1(312) 455-8498 (outside USA)

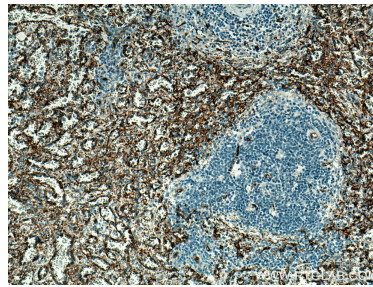
E: proteintech@ptglab.com
W: ptglab.com

This product is exclusively available under Proteintech Group brand and is not available to purchase from any other manufacturer.

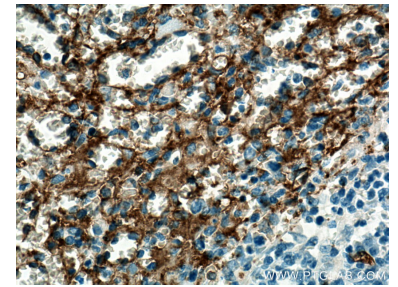
Données de validation sélectionnées



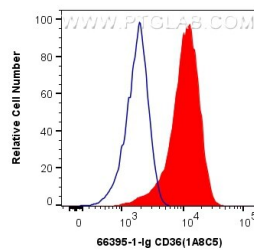
human heart tissue were subjected to SDS PAGE followed by western blot with 66395-1-Ig (CD36 Antibody) at dilution of 1:3000 incubated at room temperature for 1.5 hours.



Immunohistochemical analysis of paraffin-embedded human spleen tissue slide using 66395-1-Ig (CD36 antibody) at dilution of 1:1000 (under 10x lens). Heat mediated antigen retrieval with Tris-EDTA buffer (pH 9.0).



Immunohistochemical analysis of paraffin-embedded human spleen tissue slide using 66395-1-Ig (CD36 antibody) at dilution of 1:1000 (under 40x lens). Heat mediated antigen retrieval with Tris-EDTA buffer (pH 9.0).



1X10⁶ THP-1 cells were surface stained with 0.4 ug Anti-Human CD36 (66395-1-Ig, Clone:1A8C5) and CoraLite®488-Conjugated AffiniPure Goat Anti-Mouse IgG(H+L) at dilution 1:1000 (red), or 0.4 ug Mouse IgG1 Isotype Control (MOPC-21) (65124-1-Ig, Clone: MOPC-21) (blue). Cells were not fixed.