

À des fins de recherche uniquement

# Anticorps Monoclonal anti-Plasminogen



Numéro de catalogue: 66399-1-Ig **5 Publications**

## Informations de base

<b>Numéro de catalogue:</b> 66399-1-Ig	<b>Numéro d'acquisition GenBank:</b> BC060513	<b>Méthode de purification:</b> Purification par protéine A
<b>Taille:</b> 150ul , Concentration: 1200 µg/ml by Nanodrop and 1000 µg/ml by Bradford method using BSA as the standard;	<b>Identification du gène (NCBI):</b> 5340	<b>CloneNo.:</b> 1F6A11
<b>Hôte:</b> Mouse	<b>Nom complet:</b> plasminogen	<b>Dilutions recommandées:</b> WB 1:1000-1:4000 IHC 1:50-1:500 IF 1:200-1:800
<b>Isotype:</b> IgG1	<b>MW calculé:</b> 810 aa, 91 kDa	
<b>Immunogen Catalog Number:</b> AG9938	<b>MW observés:</b> 105 kDa	

## Applications

<b>Applications testées:</b> IF, IHC, WB, ELISA	<b>Contrôles positifs:</b> WB : tissu plasmatique humain, IHC : tissu de cancer du foie humain, IF : tissu de cancer du foie humain,
<b>Demandes citées:</b> IHC, WB	
<b>Spécificité de l'espèce:</b> Humain	
<b>Espèces citées:</b> Humain, souris	
<b>Remarque-IHC: il est suggéré de démasquer l'antigène avec un tampon de TE buffer pH 9,0; (*) A défaut, 'le démasquage de l'antigène peut être effectué avec un tampon citrate pH 6,0.</b>	

## Informations générales

Plasminogen is a secreted blood zymogen that is activated by proteolysis and converted to plasmin and angiostatin. Plasminogen plays an important role in fibrinolysis as well as wound healing, cell migration, tissue modeling and angiogenesis. Plasminogen is synthesized in the liver, and it circulates in the blood, with a half-life of 2.2 days. Plasminogen is the precursor of plasmin, which lyses fibrin clots to fibrin degradation products (FDP) and D-dimer; the conversion to active protease is mediated by tissue-type (tPA) and urokinase-type (uPA) plasminogen activators. Defects in plasminogen are likely a cause of thrombophilia and ligneous conjunctivitis.

## Publications notables

Autrice	Pubmed ID	Journal	Application
Hui Shi	36376702	Clin Transl Oncol	WB,IHC
Weisi Lu	35859222	Angiogenesis	WB
Pingping Ma	33410782	Aging (Albany NY)	WB

## Stockage

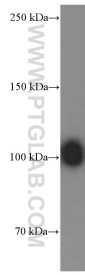
**Stockage:**  
Stocker à -20°C. Stable pendant un an après l'expédition.  
**Tampon de stockage:**  
PBS avec azoture de sodium à 0,02 % et glycérol à 50 % pH 7,3  
L'aliquotage n'est pas nécessaire pour le stockage à -20C

\*\*\* Les 20ul contiennent 0,1% de BSA.

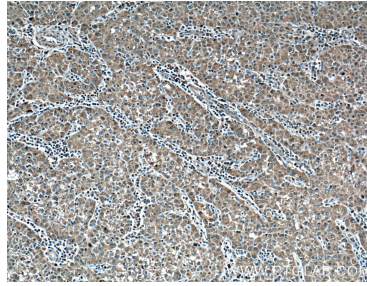
For technical support and original validation data for this product please contact:  
T: 1 (888) 4PTGLAB (1-888-478-4522) (toll free in USA), or 1(312) 455-8498 (outside USA)  
E: proteintech@ptglab.com  
W: ptglab.com

This product is exclusively available under Proteintech Group brand and is not available to purchase from any other manufacturer.

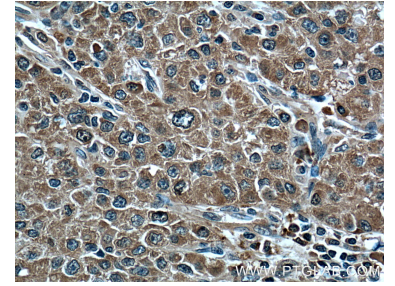
## Données de validation sélectionnées



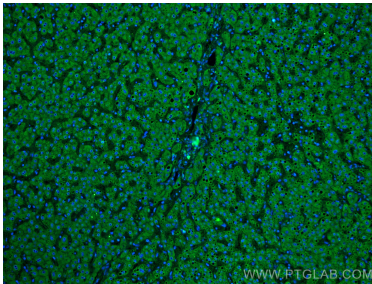
human plasma were subjected to SDS PAGE followed by western blot with 66399-1-Ig (PLG Antibody) at dilution of 1:2000 incubated at room temperature for 1.5 hours.



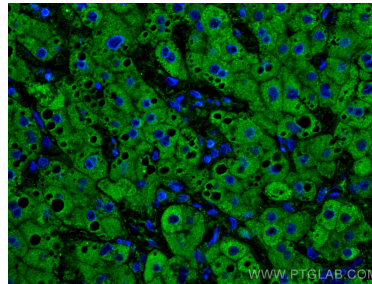
Immunohistochemical analysis of paraffin-embedded human liver cancer tissue slide using 66399-1-Ig (PLG Antibody) at dilution of 1:200 (under 10x lens). Heat mediated antigen retrieval with Tris-EDTA buffer (pH 9.0).



Immunohistochemical analysis of paraffin-embedded human liver cancer tissue slide using 66399-1-Ig (PLG Antibody) at dilution of 1:200 (under 40x lens). Heat mediated antigen retrieval with Tris-EDTA buffer (pH 9.0).



Immunofluorescent analysis of (4% PFA) fixed human liver cancer tissue using Plasminogen antibody (66399-1-Ig, Clone: 1F6A11) at dilution of 1:400 and CoraLite®488-Conjugated AffiniPure Goat Anti-Mouse IgG(H+L).



Immunofluorescent analysis of (4% PFA) fixed human liver cancer tissue using Plasminogen antibody (66399-1-Ig, Clone: 1F6A11) at dilution of 1:400 and CoraLite®488-Conjugated AffiniPure Goat Anti-Mouse IgG(H+L).