

À des fins de recherche uniquement

Anticorps Monoclonal anti-PSMB10

Numéro de catalogue: 66403-1-Ig



Informations de base

Numéro de catalogue: 66403-1-Ig	Numéro d'acquisition GenBank: BC017198	Méthode de purification: Purification par protéine A
Taille: 150ul , Concentration: 1200 µg/ml by Nanodrop and 1000 µg/ml by Bradford method using BSA as the standard;	Identification du gène (NCBI): 5699	CloneNo.: 1G8C1
Hôte: Mouse	Nom complet: proteasome (prosome, macropain) subunit, beta type, 10	Dilutions recommandées: WB 1:1000-1:4000 IHC 1:150-1:600
Isotype: IgG2a	MW calculé 273 aa, 29 kDa	
Immunogen Catalog Number: AG8835	MW observés: 28 kDa	

Applications

Applications testées:

IHC, WB, ELISA

Spécificité de l'espèce:

Humain, porc, rat

Remarque-IHC: il est suggéré de démasquer l'antigène avec un tampon de TE buffer pH 9.0; (*) À défaut, le démasquage de l'antigène peut être effectué avec un tampon citrate pH 6,0.

Contrôles positifs:

WB : cellules Raji, cellules Ramos, cellules U-937, tissu de thymus de porc, tissu de thymus de rat, tissu splénique humain

IHC : tissu de cancer du foie humain,

Informations générales

SMB10(Proteasome subunit beta type-10) is also named as LMP10, MECL1.It belongs to the peptidase T1B family and is a multicatalytic proteinase complex which is characterized by its ability to cleave peptides with Arg, Phe, Tyr, Leu, and Glu adjacent to the leaving group at neutral or slightly basic pH.

Stockage

Stockage:

Stocker à -20°C. Stable pendant un an après l'expédition.

Tampon de stockage:

PBS avec azoture de sodium à 0,02 % et glycérol à 50 % pH 7,3

L'aliquotage n'est pas nécessaire pour le stockage à -20C

*** Les 20ul contiennent 0,1% de BSA.

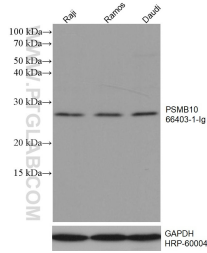
For technical support and original validation data for this product please contact:

T: 1 (888) 4PTGLAB (1-888-478-4522) (toll free in USA), or 1(312) 455-8498 (outside USA)

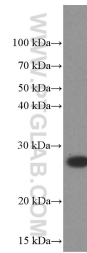
E: proteintech@ptglab.com
W: ptglab.com

This product is exclusively available under Proteintech Group brand and is not available to purchase from any other manufacturer.

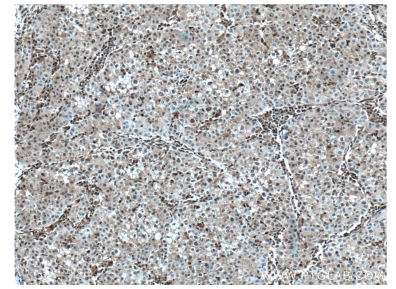
Données de validation sélectionnées



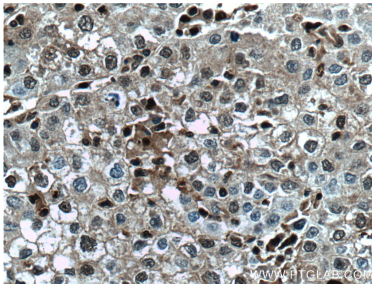
Various lysates were subjected to SDS PAGE followed by western blot with 66403-1-Ig (PSMB10 antibody) at dilution of 1:2000 incubated at room temperature for 1.5 hours. The membrane was stripped and reblotted with HRP-conjugated GAPDH Monoclonal antibody (HRP-60004) as loading control.



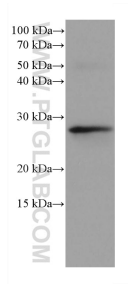
Raji cells were subjected to SDS PAGE followed by western blot with 66403-1-Ig (PSMB10 Antibody) at dilution of 1:1000 incubated at room temperature for 1.5 hours.



Immunohistochemical analysis of paraffin-embedded human liver cancer tissue slide using 66403-1-Ig (PSMB10 antibody) at dilution of 1:300 (under 10x lens. Heat mediated antigen retrieval with Tris-EDTA buffer (pH 9.0).



Immunohistochemical analysis of paraffin-embedded human liver cancer tissue slide using 66403-1-Ig (PSMB10 antibody) at dilution of 1:300 (under 40x lens. Heat mediated antigen retrieval with Tris-EDTA buffer (pH 9.0).



rat thymus tissue were subjected to SDS PAGE followed by western blot with 66403-1-Ig (PSMB10 antibody) at dilution of 1:2000 incubated at room temperature for 1.5 hours.