

À des fins de recherche uniquement

# Anticorps Monoclonal anti-SCP3

Numéro de catalogue: 66409-1-Ig **2 Publications**



## Informations de base

|  |   |  |
|--|---|--|
| <b>Numéro de catalogue:</b><br>66409-1-Ig  | <b>Numéro d'acquisition GenBank:</b><br>BC062662      | <b>Méthode de purification:</b><br>Purification par protéine A |
| <b>Taille:</b><br>150ul , Concentration: 1200 µg/ml by Nanodrop and 1000 µg/ml by Bradford method using BSA as the standard; | <b>Identification du gène (NCBI):</b><br>50511        | <b>CloneNo.:</b><br>1A11F1                                     |
| <b>Hôte:</b><br>Mouse  | <b>Nom complet:</b><br>synaptonemal complex protein 3 | <b>Dilutions recommandées:</b><br>WB 1:1000-1:8000             |
| <b>Isotype:</b><br>IgG1  | <b>MW calculé:</b><br>236 aa, 28 kDa                  |  |
| <b>Immunogen Catalog Number:</b><br>AG19330  | <b>MW observés:</b><br>30 kDa                         |  |

## Applications

|   |   |
|---|---|
| <b>Applications testées:</b><br>WB, ELISA | <b>Contrôles positifs:</b><br>WB : tissu testiculaire humain, cellules DU 145 |
| <b>Demandes citées:</b><br>IF             |   |
| <b>Spécificité de l'espèce:</b><br>Humain |   |
| <b>Espèces citées:</b><br>souris          |   |

## Informations générales

SYCP3 is an essential structural component of the synaptonemal complex. This complex is involved in synapsis, recombination and segregation of meiotic chromosomes. SYCP3 is required for centromere pairing during meiosis in male germ cells. SYCP3 is also required for normal meiosis during spermatogenesis and male fertility. Mutations in SYCP3 are associated with azoospermia in males and susceptibility to pregnancy loss in females.

## Publications notables

| Autrice     | Pubmed ID | Journal             | Application |
|-------------|-----------|---------------------|-------------|
| Hongge Xu   | 36272447  | Gen Comp Endocrinol | IF          |
| Suixing Fan | 33508233  | Am J Hum Genet      | IF          |

## Stockage

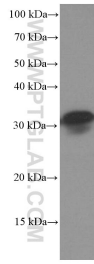
**Stockage:**  
Stocker à -20°C. Stable pendant un an après l'expédition.  
**Tampon de stockage:**  
PBS avec azoture de sodium à 0,02 % et glycérol à 50 % pH 7,3  
L'aliquotage n'est pas nécessaire pour le stockage à -20C

\*\*\* Les 20ul contiennent 0,1% de BSA.

For technical support and original validation data for this product please contact:  
T: 1 (888) 4PTGLAB (1-888-478-4522) (toll free in USA), or 1(312) 455-8498 (outside USA)  
E: proteintech@ptglab.com  
W: ptglab.com

This product is exclusively available under Proteintech Group brand and is not available to purchase from any other manufacturer.

## Données de validation sélectionnées



human testis tissue were subjected to SDS PAGE followed by western blot with 66409-1-Ig (SYCP3 Antibody) at dilution of 1:4000 incubated at room temperature for 1.5 hours.