

À des fins de recherche uniquement

Anticorps Monoclonal anti-SOX2

Numéro de catalogue: 66411-1-Ig

Phare

31 Publications



Informations de base

Numéro de catalogue: 66411-1-Ig	Numéro d'acquisition GenBank: BC013923	Méthode de purification: Purification par protéine G
Taille: 150ul, Concentration: 1900 µg/ml by Nanodrop and 1000 µg/ml by Bradford method using BSA as the standard;	Identification du gène (NCBI): 6657	CloneNo.: 4B9B10
Hôte: Mouse	Nom complet: SRY (sex determining region Y)-box 2	Dilutions recommandées: WB 1:1000-1:5000 IHC 1:50-1:500 IF 1:500-1:2000
Isotype: IgG1	MW calculé: 34 kDa	
Immunogen Catalog Number: AG13635	MW observés: 34-40 kDa	

Applications

Applications testées:
FC, IF, IHC, WB, ELISA

Demandes citées:
IF, IHC, WB

Spécificité de l'espèce:
Humain, porc, rat, souris

Espèces citées:
Humain, rat, souris

Remarque-IHC: il est suggéré de démasquer l'antigène avec un tampon de TE buffer pH 9,0; (*) A défaut, 'le démasquage de l'antigène peut être effectué avec un tampon citrate pH 6,0.

Contrôles positifs:

WB : cellules U-251, cellules C6, cellules HEK-293, cellules MCF-7, tissu cérébral de porc, tissu cérébral humain foetal

IHC : tissu de cancer du poumon humain, tissu cérébral de souris, tissu embryonnaire de souris

IF : tissu cérébral de souris,

Informations générales

Sox2, also known as SRY (sex determining region Y)-box 2, is a transcription factor essential for maintaining self-renewal of undifferentiated ES cells and is one of the key transcription factors used to reprogram mouse and human fibroblasts to a pluripotent state. Sox2 expressed in undifferentiated pluripotent stem cells and germ cells during development. This antibody is raised against an internal region of human SOX2.

Publications notables

Autrice	Pubmed ID	Journal	Application
Qian Luo	36175708	Med Oncol	WB
Shuai Yu	34616727	Front Cell Dev Biol	WB
Liang Cao	36159391	Front Cell Neurosci	WB,IF

Stockage

Stockage:

Stocker à -20°C. Stable pendant un an après l'expédition.

Tampon de stockage:

PBS avec azoture de sodium à 0,02 % et glycérol à 50 % pH 7,3

L'aliquotage n'est pas nécessaire pour le stockage à -20C

*** Les 20ul contiennent 0,1% de BSA.

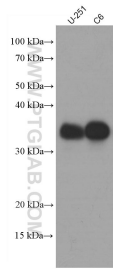
For technical support and original validation data for this product please contact:

T: 1 (888) 4PTGLAB (1-888-478-4522) (toll free in USA), or 1(312) 455-8498 (outside USA)

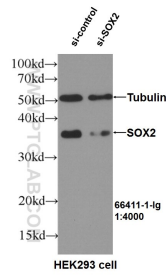
E: proteintech@ptglab.com
W: ptglab.com

This product is exclusively available under Proteintech Group brand and is not available to purchase from any other manufacturer.

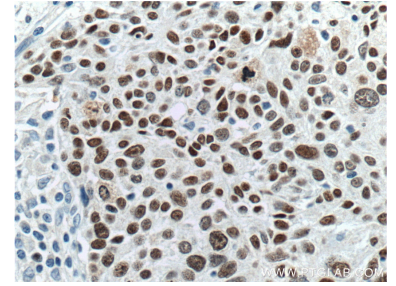
Données de validation sélectionnées



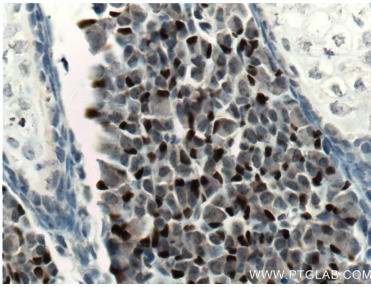
Various lysates were subjected to SDS PAGE followed by western blot with 66411-1-Ig (SOX2 antibody) at dilution of 1:2500 incubated at room temperature for 1.5 hours.



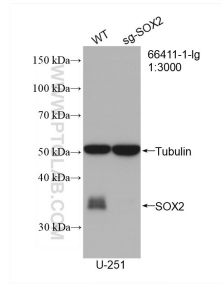
WB result of SOX2 antibody (66411-1-Ig, 1:4000) with si-Control and si-SOX2 transfected HEK293 cells..



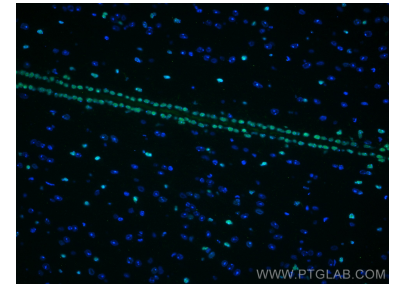
Immunohistochemical analysis of paraffin-embedded human lung cancer tissue slide using 66411-1-Ig (SOX2 Antibody) at dilution of 1:500 (under 40x lens). Heat mediated antigen retrieval with Tris-EDTA buffer (pH 9.0).



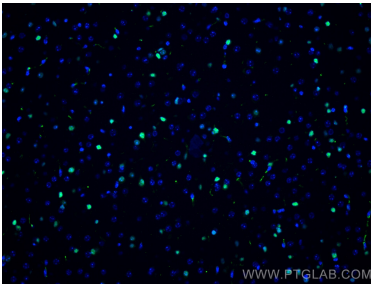
Immunohistochemical analysis of paraffin-embedded mouse embryo tissue slide using 66411-1-Ig (SOX2 Antibody) at dilution of 1:500 (under 40x lens). Heat mediated antigen retrieval with Tris-EDTA buffer (pH 9.0).



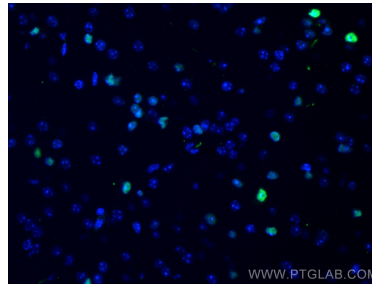
WB result of SOX2 antibody (66411-1-Ig; 1:3000; room temperature for 1.5 hours) with negative control and SOX2 knockout U-251 cells.



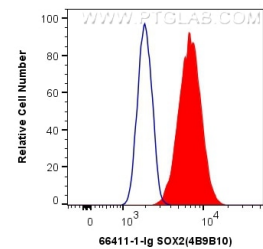
Immunofluorescent analysis of (4% PFA) fixed mouse brain tissue using SOX2 antibody (66411-1-Ig, Clone: 4B9B10) at dilution of 1:400 and CoraLite®488-Conjugated AffiniPure Goat Anti-Mouse IgG(H+L).



Immunofluorescent analysis of (4% PFA) fixed mouse brain tissue using SOX2 antibody (66411-1-Ig, Clone: 4B9B10) at dilution of 1:1000 and CoraLite®488-Conjugated AffiniPure Goat Anti-Mouse IgG(H+L).



Immunofluorescent analysis of (4% PFA) fixed mouse brain tissue using SOX2 antibody (66411-1-Ig, Clone: 4B9B10) at dilution of 1:1000 and CoraLite®488-Conjugated AffiniPure Goat Anti-Mouse IgG(H+L).



1X10⁶ U-251 cells were intracellularly stained with 0.5 ug Anti-Human SOX2 (66411-1-Ig, Clone:4B9B10) (red) labeled with FlexAble CoraLite® Plus 555 Antibody Labeling Kit for Mouse IgG1 (KFA022), or 0.5 ug Control Antibody. Cells were fixed and permeabilized with Transcription Factor Staining Buffer Kit (PF00011).