

À des fins de recherche uniquement

Anticorps Monoclonal anti-Alpha Synuclein



Numéro de catalogue: 66412-1-Ig **3 Publications**

Informations de base

Numéro de catalogue: 66412-1-Ig	Numéro d'acquisition GenBank: BC013293	Méthode de purification: Purification par protéine A
Taille: 150ul, Concentration: 1400 µg/ml by Nanodrop and 1000 µg/ml by Bradford method using BSA as the standard;	Identification du gène (NCBI): 6622	CloneNo.: 1B10E9
Hôte: Mouse	Nom complet: synuclein, alpha (non A4 component of amyloid precursor)	Dilutions recommandées: WB 1:500-1:2000 IHC 1:500-1:2000
Isotype: IgG2a	MW calculé: 14 kDa	
Immunogen Catalog Number: AG1285	MW observés: 18-19 kDa	

Applications

Applications testées:

IHC, WB, ELISA

Demandes citées:

IF, IHC

Spécificité de l'espèce:

Humain, rat, souris

Espèces citées:

Humain, rat

Remarque-IHC: il est suggéré de démasquer l'antigène avec un tampon de TE buffer pH 9,0; (*) A défaut, 'le démasquage de l'antigène peut être effectué avec un tampon citrate pH 6,0.

Contrôles positifs:

WB : tissu cérébral de souris, tissu cérébral de rat

IHC : tissu de cervelet de souris, tissu cérébral de rat, tissu cérébral de souris, tissu de gliome humain

Informations générales

Alpha Synuclein (α -syn) is a 14-19 kDa phosphoprotein that is primarily localized to the presynaptic terminals of mature neurons, where it is involved in synaptic function and plasticity. α -syn has drawn intense interest ever since the late 1990s, when the first α -synuclein missense mutation was identified as a cause of familial Parkinson's disease (PD). Aggregated and hyper-phosphorylated forms of α -syn protein are the pathological hallmark of Lewy body disease, which includes Parkinson's disease (PD), diffuse Lewy body disease (DLBD), and Lewy body variant of Alzheimer's disease (LBV). This antibody can recognize all the isoforms of α -syn.

Publications notables

Autrice	Pubmed ID	Journal	Application
Li-Hua Bian	35728354	Biomed Pharmacother	IHC
Jihua Shi	36795141	Appl Microbiol Biotechnol	IF
Wenfeng Liu	31750928	J Neuropathol Exp Neurol	IHC

Stockage

Stockage:

Stocker à -20°C. Stable pendant un an après l'expédition.

Tampon de stockage:

PBS avec azotate de sodium à 0,02 % et glycérol à 50 % pH 7,3

L'aliquotage n'est pas nécessaire pour le stockage à -20C

*** Les 20ul contiennent 0,1% de BSA.

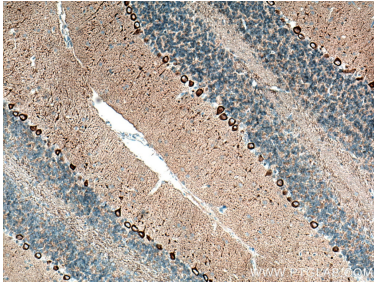
For technical support and original validation data for this product please contact:

T: 1 (888) 4PTGLAB (1-888-478-4522) (toll free in USA), or 1(312) 455-8498 (outside USA)

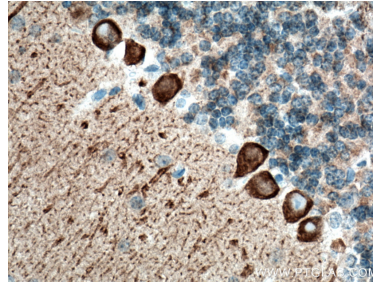
E: proteintech@ptglab.com
W: ptglab.com

This product is exclusively available under Proteintech Group brand and is not available to purchase from any other manufacturer.

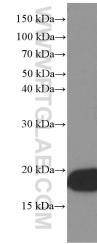
Données de validation sélectionnées



Immunohistochemical analysis of paraffin-embedded mouse cerebellum tissue slide using 66412-1-Ig (alpha-Synuclein antibody) at dilution of 1:1000 (under 10x lens). Heat mediated antigen retrieval with Tris-EDTA buffer (pH 9.0).



Immunohistochemical analysis of paraffin-embedded mouse cerebellum tissue slide using 66412-1-Ig (alpha-Synuclein antibody) at dilution of 1:1000 (under 40x lens). Heat mediated antigen retrieval with Tris-EDTA buffer (pH 9.0).



mouse brain tissue were subjected to SDS PAGE followed by western blot with 66412-1-Ig (alpha-Synuclein Antibody) at dilution of 1:1000 incubated at room temperature for 1.5 hours.