

À des fins de recherche uniquement

Anticorps Monoclonal anti-LDLR

Numéro de catalogue: 66414-1-Ig

Phare

4 Publications



Informations de base

Numéro de catalogue: 66414-1-Ig	Numéro d'acquisition GenBank: BC014514	Méthode de purification: Purification par protéine G
Taille: 150ul, Concentration: 1200 µg/ml by Nanodrop and 1000 µg/ml by Bradford method using BSA as the standard;	Identification du gène (NCBI): 3949	CloneNo.: 1A2A3
Hôte: Mouse	Nom complet: low density lipoprotein receptor	Dilutions recommandées: WB 1:5000-1:15000 IHC 1:50-1:500
Isotype: IgG1	MW calculé: 95 kDa	
Immunogen Catalog Number: AG1236	MW observés: 120 kDa, 160 kDa	

Applications

Applications testées:

IHC, WB, ELISA

Demandes citées:

FC, WB

Spécificité de l'espèce:

Humain

Espèces citées:

Humain

Remarque-IHC: il est suggéré de démasquer l'antigène avec un tampon de TE buffer pH 9,0; (*) A défaut, 'le démasquage de l'antigène peut être effectué avec un tampon citrate pH 6,0.

Contrôles positifs:

WB : cellules HeLa, cellules HEK-293, cellules HepG2, cellules Jurkat, cellules MCF-7, cellules Raji

IHC : tissu hépatique humain,

Informations générales

LDLR (low density lipoprotein receptor) is a member of the LDL receptor gene family and is involved in receptor-mediated endocytosis of specific ligands. The LDLR is a cell surface glycoprotein that scavenges LDL from the blood and regulates plasma LDL cholesterol. The cytoplasmic domain of the LDL receptor is necessary for the receptor to cluster in coated pits, which promotes the rapid endocytosis of bound LDL. The protein is highly glycosylated through N- and O-linkages and thus migrates at 100 to 160 kDa bands on SDS-PAGE.

Publications notables

Autrice	Pubmed ID	Journal	Application
Zoe White	36447272	Skelet Muscle	WB
Jun Xiao	30864739	Int J Mol Med	WB
Shui-Mei Sun	32724176	Acta Pharmacol Sin	WB

Stockage

Stockage:

Stocker à -20°C. Stable pendant un an après l'expédition.

Tampon de stockage:

PBS avec azoture de sodium à 0,02 % et glycérol à 50 % pH 7,3

L'aliquotage n'est pas nécessaire pour le stockage à -20C

*** Les 20ul contiennent 0,1% de BSA.

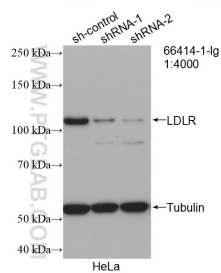
For technical support and original validation data for this product please contact:

T: 1 (888) 4PTGLAB (1-888-478-4522) (toll free in USA), or 1(312) 455-8498 (outside USA)

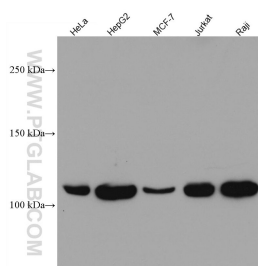
E: proteintech@ptglab.com
W: ptglab.com

This product is exclusively available under Proteintech Group brand and is not available to purchase from any other manufacturer.

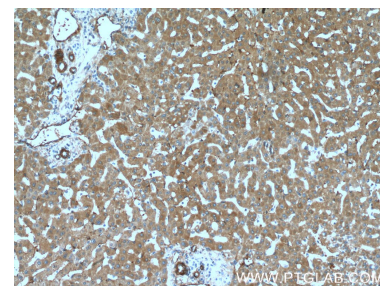
Données de validation sélectionnées



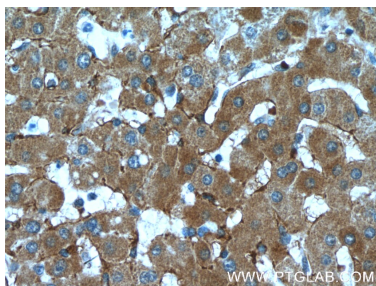
WB result of LDLR antibody (66414-1-Ig; 1:4000; incubated at room temperature for 1.5 hours) with sh-Control and sh-LDLR transfected HeLa cells.



Various lysates were subjected to SDS PAGE followed by western blot with 66414-1-Ig (LDLR antibody) at dilution of 1:10000 incubated at room temperature for 1.5 hours.



Immunohistochemical analysis of paraffin-embedded human liver tissue slide using 66414-1-Ig (LDLR Antibody) at dilution of 1:400 (under 10x lens).



Immunohistochemical analysis of paraffin-embedded human liver tissue slide using 66414-1-Ig (LDLR Antibody) at dilution of 1:400 (under 40x lens).