

À des fins de recherche uniquement

# Anticorps Monoclonal anti-IkB Alpha



Numéro de catalogue: 66418-1-Ig

Phare

21 Publications

## Informations de base

Numéro de catalogue: 66418-1-Ig	Numéro d'acquisition GenBank: BC004983	Méthode de purification: Purification par protéine G
Taille: 150ul , Concentration: 773 µg/ml by Bradford method using BSA as the standard;	Identification du gène (NCBI): 4792	CloneNo.: 2G6H7
Hôte: Mouse	Nom complet: nuclear factor of kappa light polypeptide gene enhancer in B-cells inhibitor, alpha	Dilutions recommandées: WB 1:5000-1:50000 IHC 1:50-1:500
Isotype: IgG1	MW calculé 36 kDa	
Immunogen Catalog Number: AG22040	MW observés: 36 kDa	

## Applications

### Applications testées:

IHC, WB, ELISA

### Demandes citées:

WB

### Spécificité de l'espèce:

Humain, rat, souris

### Espèces citées:

Humain, porc, rat, souris

**Remarque-IHC: il est suggéré de démasquer l'antigène avec un tampon de TE buffer pH 9,0; (\*) A défaut, 'le démasquage de l'antigène peut être 'effectué avec un tampon citrate pH 6,0.**

### Contrôles positifs:

WB : cellules HeLa, cellules C6, cellules HEK-293, cellules HSC-T6, cellules Jurkat, cellules K-562, cellules NIH/3T3, cellules PC-12, cellules Raji, cellules RAW 264.7, cellules ROS1728

IHC : tissu de cancer de la prostate humain,

## Informations générales

Nuclear factor of kappa light polypeptide gene enhancer in B-cells inhibitor, alpha (NFKB1A, synonyms: IKBA, MAD-3, NFKB1). NFKB1 or NFKB2 is bound to REL, RELA , or RELB to form the NFKB complex. The NFKB complex is inhibited by I-kappa-B proteins (NFKBIA or NFKBIB), which inactivate NF-kappa-B by trapping it in the cytoplasm. Phosphorylation of serine residues on the I-kappa-B proteins by kinases (IKBKA, or IKBKB) marks them for destruction via the ubiquitination pathway, thereby allowing activation of the NF-kappa-B complex. Activated NFKB complex translocates into the nucleus and binds DNA at kappa-B-binding motifs such as 5-prime GGGRNNYCC 3-prime or 5-prime HGGARNYYCC 3-prime.

## Publications notables

Autrice	Pubmed ID	Journal	Application
Jinxin Miao	36097701	Animal Model Exp Med	WB
Liu Yang	31485630	Mol Med Rep	WB
Li Qian	36263717	Food Funct	WB

## Stockage

### Stockage:

Stocker à -20°C. Stable pendant un an après l'expédition.

### Tampon de stockage:

PBS avec azoture de sodium à 0,02 % et glycérol à 50 % pH 7,3

L'aliquoteage n'est pas nécessaire pour le stockage à -20C

\*\*\* Les 20ul contiennent 0,1% de BSA.

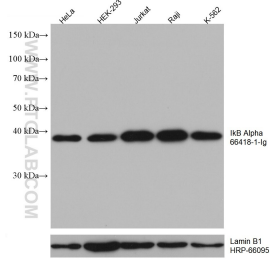
For technical support and original validation data for this product please contact:

T: 1 (888) 4PTGLAB (1-888-478-4522) (toll free in USA), or 1(312) 455-8498 (outside USA)

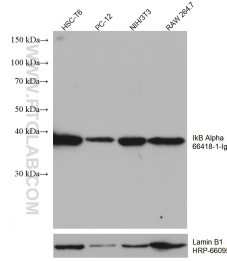
E: proteintech@ptglab.com  
W: ptglab.com

This product is exclusively available under Proteintech Group brand and is not available to purchase from any other manufacturer.

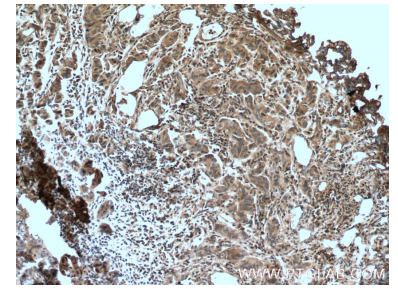
## Données de validation sélectionnées



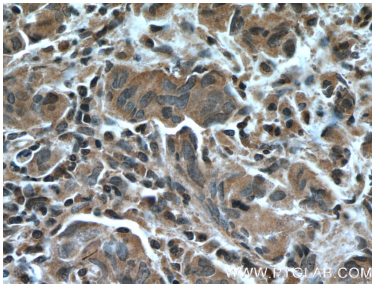
Various lysates were subjected to SDS PAGE followed by western blot with 66418-1-Ig (IkB alpha antibody) at dilution of 1:10000 incubated at room temperature for 1.5 hours. The membrane was stripped and reblotted with HRP-conjugated Lamin B1 Monoclonal antibody (HRP-66095) as loading control.



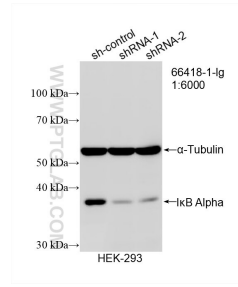
Various lysates were subjected to SDS PAGE followed by western blot with 66418-1-Ig (IkB alpha antibody) at dilution of 1:10000 incubated at room temperature for 1.5 hours. The membrane was stripped and reblotted with HRP-conjugated Lamin B1 Monoclonal antibody (HRP-66095) as loading control.



Immunohistochemical analysis of paraffin-embedded human prostate cancer tissue slide using 66418-1-Ig (IkB alpha antibody) at dilution of 1:200 (under 10x lens). Heat mediated antigen retrieval with Tris-EDTA buffer (pH 9.0).



Immunohistochemical analysis of paraffin-embedded human prostate cancer tissue slide using 66418-1-Ig (IkB alpha antibody) at dilution of 1:200 (under 40x lens). Heat mediated antigen retrieval with Tris-EDTA buffer (pH 9.0).



WB result of IkB Alpha antibody (66418-1-Ig; 1:6000; incubated at room temperature for 1.5 hours) with sh-Control and sh-IkB Alpha transfected HEK-293 cells.