

À des fins de recherche uniquement

Anticorps Monoclonal anti-CDC37

Numéro de catalogue: 66420-1-Ig **1 Publications**



Informations de base

Numéro de catalogue: 66420-1-Ig	Numéro d'acquisition GenBank: BC000083	Méthode de purification: Purification par protéine A
Taille: 150ul , Concentration: 1600 µg/ml by Nanodrop and 1000 µg/ml by Bradford method using BSA as the standard;	Identification du gène (NCBI): 11140	CloneNo.: 1C2A6
Hôte: Mouse	Nom complet: cell division cycle 37 homolog (S. cerevisiae)	Dilutions recommandées: WB 1:2000-1:5000 IF 1:50-1:500
Isotype: IgG2a	MW calculé 44 kDa	
Immunogen Catalog Number: AG0267	MW observés: 44 kDa	

Applications

Applications testées:

IF, WB, ELISA

Demandes citées:

IF

Spécificité de l'espèce:

Humain, rat, souris

Espèces citées:

Humain

Contrôles positifs:

WB : cellules HeLa, cellules HEK-293, cellules Jurkat, cellules MCF-7, cellules NIH/3T3, cellules RAW 264.7, cellules ROS1728

IF : cellules HeLa,

Informations générales

CDC (cell division control) family of proteins are regulatory proteins involved in the processes of cell cycle and proliferation. CDC37, migrated as a protein of 50 kDa in SDS PAGE, is a co-chaperone protein that recruits several immature client kinases to Hsp90 for proper folding. It functions in association with Hsp90, although little is known of its mechanism of action or where it fits into a folding pathway involving other Hsp90 cochaperones. CDC37 up-regulation is a common early event in some localized human cancers. But, the effect of CDC37 dysregulation in human cells is unclear.

Publications notables

Autrice	Pubmed ID	Journal	Application
Chuan-Jing Cheng	34326484	Acta Pharmacol Sin	IF

Stockage

Stockage:

Stocker à -20°C. Stable pendant un an après l'expédition.

Tampon de stockage:

PBS avec azoture de sodium à 0,02 % et glycérol à 50 % pH 7,3

L'aliquotage n'est pas nécessaire pour le stockage à -20C

*** Les 20ul contiennent 0,1% de BSA.

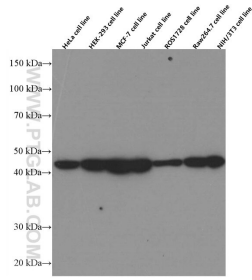
For technical support and original validation data for this product please contact:

T: 1 (888) 4PTGLAB (1-888-478-4522) (toll free
in USA), or 1(312) 455-8498 (outside USA)

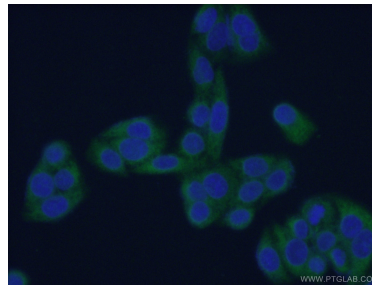
E: proteintech@ptglab.com
W: ptglab.com

This product is exclusively available under Proteintech Group brand and is not available to purchase from any other manufacturer.

Données de validation sélectionnées



Various lysates were subjected to SDS PAGE followed by western blot with 66420-1-Ig (CDC37 Antibody) at dilution of 1:5000 incubated at room temperature for 1.5 hours.



Immunofluorescent analysis of (-20°C Ethanol) fixed HeLa cells using 66420-1-Ig(CDC37 antibody) at dilution of 1:100 and Alexa Fluor 488-conjugated AffiniPure Goat Anti-Mouse IgG(H+L).