

À des fins de recherche uniquement

Anticorps Monoclonal anti-PDI

Numéro de catalogue: 66422-1-Ig **12 Publications**



Informations de base

Numéro de catalogue: 66422-1-Ig	Numéro d'acquisition GenBank: BC014504	Méthode de purification: Purification par protéine A
Taille: 150ul, Concentration: 1600 µg/ml by Nanodrop and 1000 µg/ml by Bradford method using BSA as the standard;	Identification du gène (NCBI): 5034	CloneNo.: 2E6A11
Hôte: Mouse	Nom complet: prolyl 4-hydroxylase, beta polypeptide	Dilutions recommandées: WB 1:10000-1:100000 IHC 1:100-1:400 IF 1:200-1:800
Isotype: IgG2b	MW calculé: 57 kDa	
Immunogen Catalog Number: AG1747	MW observés: 57 kDa	

Applications

Applications testées:

IF, IHC, WB, ELISA

Demandes citées:

IF, WB

Spécificité de l'espèce:

Humain, porc, rat, souris

Espèces citées:

bovin, Humain, souris

Remarque-IHC: il est suggéré de démasquer l'antigène avec un tampon de TE buffer pH 9,0; (*) A défaut, 'le démasquage de l'antigène peut être effectué avec un tampon citrate pH 6,0.

Contrôles positifs:

WB : cellules HEK-293, cellules COLO 320, cellules HepG2, cellules LO2, tissu cérébral de rat

IHC : tissu hépatique humain, tissu d'intestin grêle humain

IF : cellules HepG2,

Informations générales

PDIA1 (Protein disulfide-isomerase) is also named as ERBA2L, PDI, P4HB, PO4DB. It is a multifunctional protein that catalyzes the formation, breakage and rearrangement of disulfide bonds. In some cell types, it seems to be secreted or associated with the plasma membrane, where it undergoes constant shedding and replacement from intracellular sources. It can exist as homodimer and monomers and homotetramers may also occur (PMID:12095988).

Publications notables

Autrice	Pubmed ID	Journal	Application
Janine McCaughey	34350936	J Cell Sci	IF
Tianmiao Huang	34743989	Biochim Biophys Acta Gen Subj	IF
Xiaofan Jia	34672633	Mol Pharm	WB

Stockage

Stockage:

Stocker à -20°C. Stable pendant un an après l'expédition.

Tampon de stockage:

PBS avec azoture de sodium à 0,02 % et glycérol à 50 % pH 7,3

L'aliquotage n'est pas nécessaire pour le stockage à -20C

***** Les 20ul contiennent 0,1% de BSA.**

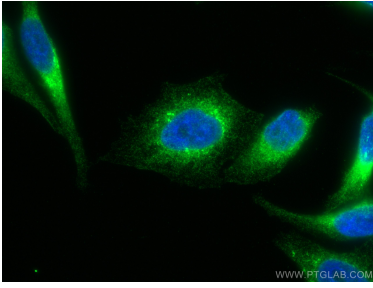
For technical support and original validation data for this product please contact:

T: 1 (888) 4PTGLAB (1-888-478-4522) (toll free in USA), or 1(312) 455-8498 (outside USA)

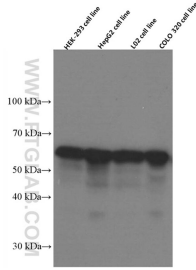
E: proteintech@ptglab.com
W: ptglab.com

This product is exclusively available under Proteintech Group brand and is not available to purchase from any other manufacturer.

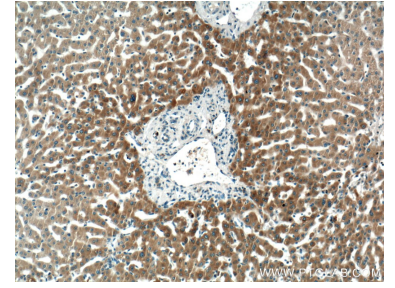
Données de validation sélectionnées



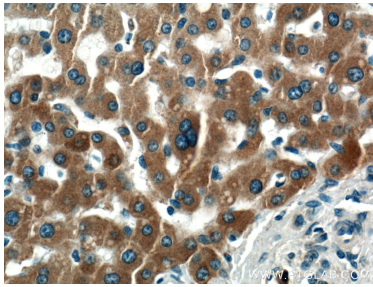
Immunofluorescent analysis of (4% PFA) fixed HepG2 cells using PDI antibody (66422-1-Ig, Clone: 2E6A11) at dilution of 1:400 and CoraLite®488-Conjugated AffiniPure Goat Anti-Mouse IgG(H+L).



HEK-293 cells were subjected to SDS PAGE followed by western blot with 66422-1-Ig (PDI Antibody) at dilution of 1:50000 incubated at room temperature for 1.5 hours.



Immunohistochemical analysis of paraffin-embedded human liver tissue slide using 66422-1-Ig (PDI Antibody) at dilution of 1:200 (under 10x lens).



Immunohistochemical analysis of paraffin-embedded human liver tissue slide using 66422-1-Ig (PDI Antibody) at dilution of 1:200 (under 40x lens).