

À des fins de recherche uniquement

Anticorps Monoclonal anti-GDI1

Numéro de catalogue: 66434-1-Ig **2 Publications**



Informations de base

Numéro de catalogue: 66434-1-Ig	Numéro d'acquisition GenBank: BC000317	Méthode de purification: Purification par protéine G
Taille: 150ul, Concentration: 1300 µg/ml by Nanodrop and 1000 µg/ml by Bradford method using BSA as the standard;	Identification du gène (NCBI): 2664	CloneNo.: 4E1G1
Hôte: Mouse	Nom complet: GDP dissociation inhibitor 1	Dilutions recommandées: WB 1:5000-1:20000 IHC 1:500-1:1000 IF 1:50-1:500
Isotype: IgG1	MW calculé: 51 kDa	
Immunogen Catalog Number: AG17511	MW observés: 55 kDa	

Applications

Applications testées:

IF, IHC, WB, ELISA

Demandes citées:

IHC

Spécificité de l'espèce:

Humain, porc, rat, souris

Espèces citées:

Humain

Remarque-IHC: il est suggéré de démasquer l'antigène avec un tampon de TE buffer pH 9,0; (*) A défaut, 'le démasquage de l'antigène peut être effectué avec un tampon citrate pH 6,0.

Contrôles positifs:

WB : cellules U-251, cellules HEK-293, cellules Neuro-2a, tissu cérébral de rat, tissu cérébral de souris

IHC : tissu de cancer du sein humain,

IF : cellules MCF-7,

Informations générales

GDP dissociation inhibitors (GDIs) are proteins that regulate the GDP-GTP exchange reaction of members of the rab family. GDIs can bind and release GDP-bound Rab proteins from membranes. Two GDI proteins towards different Rab proteins have been identified. GDI1 interacts with almost all of the Rab proteins, while GDI2 interacts with Rab11 but not Rab3A. GDI1 is expressed primarily in neural and sensory tissues and also in secretory cells, displaying a diffuse, cytoplasmic distribution in cells. It runs as a 55 kDa protein in SDS-PAGE. (PMID: 7929030, PMID: 19570034)

Publications notables

Autrice	Pubmed ID	Journal	Application
Peng Chen	32382060	Signal Transduct Target Ther	IHC
Xiao Xie	34515625	Bioengineered	IHC

Stockage

Stockage:

Stocker à -20°C. Stable pendant un an après l'expédition.

Tampon de stockage:

PBS avec azoture de sodium à 0,02 % et glycérol à 50 % pH 7,3

L'aliquotage n'est pas nécessaire pour le stockage à -20C

*** Les 20ul contiennent 0,1% de BSA.

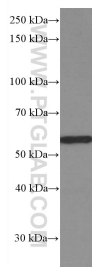
For technical support and original validation data for this product please contact:

T: 1 (888) 4PTGLAB (1-888-478-4522) (toll free in USA), or 1(312) 455-8498 (outside USA)

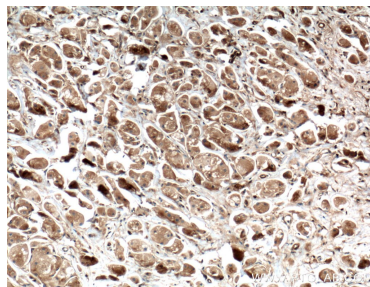
E: proteintech@ptglab.com
W: ptglab.com

This product is exclusively available under Proteintech Group brand and is not available to purchase from any other manufacturer.

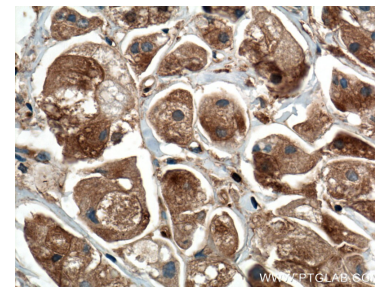
Données de validation sélectionnées



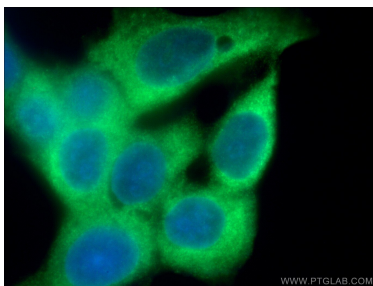
U-251 cells were subjected to SDS PAGE followed by western blot with 66434-1-Ig (GDI1 Antibody) at dilution of 1:20000 incubated at room temperature for 1.5 hours.



Immunohistochemical analysis of paraffin-embedded human breast cancer tissue slide using 66434-1-Ig (GDI1 antibody) at dilution of 1:1000 (under 10x lens. Heat mediated antigen retrieval with Tris-EDTA buffer (pH 9.0).



Immunohistochemical analysis of paraffin-embedded human breast cancer tissue slide using 66434-1-Ig (GDI1 antibody) at dilution of 1:1000 (under 40x lens. Heat mediated antigen retrieval with Tris-EDTA buffer (pH 9.0).



Immunofluorescent analysis of (-20°C Ethanol) fixed MCF-7 cells using 66434-1-Ig (GDI1 antibody) at dilution of 1:100 and Alexa Fluor 488-conjugated AffiniPure Goat Anti-Mouse IgG(H+L).