

À des fins de recherche uniquement

Anticorps Monoclonal anti-CSN2

Numéro de catalogue: 66435-1-Ig



Informations de base

Numéro de catalogue: 66435-1-Ig	Numéro d'acquisition GenBank: BC012629	Méthode de purification: Purification par protéine G
Taille: 150ul, Concentration: 1100 µg/ml by Nanodrop and 1000 µg/ml by Bradford method using BSA as the standard;	Identification du gène (NCBI): 9318	CloneNo.: 2H10E6
Hôte: Mouse	Nom complet: COP9 constitutive photomorphogenic homolog subunit 2 (Arabidopsis)	Dilutions recommandées: WB 1:2000-1:16000 IHC 1:50-1:500 IF 1:200-1:800
Isotype: IgG1	MW calculé: 52 kDa	
Immunogen Catalog Number: AG1415	MW observés: 52 kDa	

Applications

Applications testées:

IF, IHC, WB, ELISA

Spécificité de l'espèce:

Humain, rat, souris

Remarque-IHC: il est suggéré de démasquer l'antigène avec un tampon de TE buffer pH 9,0; (*) À défaut, 'le démasquage de l'antigène peut être 'effectué avec un tampon citrate pH 6,0.

Contrôles positifs:

WB : cellules NIH/3T3, cellules C6, cellules RAW 264.7, cellules ROS1728

IHC : tissu de tumeur ovarienne humain,

IF : tissu de tumeur ovarienne humain,

Informations générales

COP52 is an essential component of the COP9 signalosome complex (CSN), a complex involved in various cellular and developmental processes. The CSN complex is an essential regulator of the ubiquitin (Ubl) conjugation pathway by mediating the deneddylation of the cullin subunits of SCF-type E3 ligase complexes, leading to decrease the Ubl ligase activity of SCF-type complexes such as SCF, CSA or DDB2. The complex is also involved in phosphorylation of p53/TP53, c-jun/JUN, IκappaBα/NFKBIA, ITPK1 and IRF8/ICSBP, possibly via its association with CK2 and PKD kinases. CSN-dependent phosphorylation of TP53 and JUN promotes and protects degradation by the Ubl system, respectively.

Stockage

Stockage:

Stocker à -20°C. Stable pendant un an après l'expédition.

Tampon de stockage:

PBS avec azoture de sodium à 0,02 % et glycérol à 50 % pH 7,3

L'aliquotage n'est pas nécessaire pour le stockage à -20C

*** Les 20ul contiennent 0,1% de BSA.

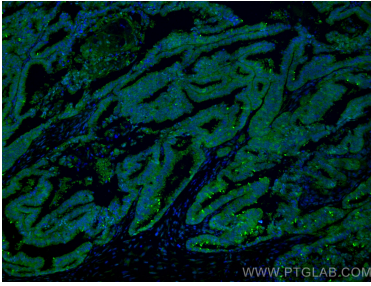
For technical support and original validation data for this product please contact:

T: 1 (888) 4PTGLAB (1-888-478-4522) (toll free
in USA), or 1(312) 455-8498 (outside USA)

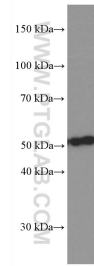
E: proteintech@ptglab.com
W: ptglab.com

This product is exclusively available under Proteintech Group brand and is not available to purchase from any other manufacturer.

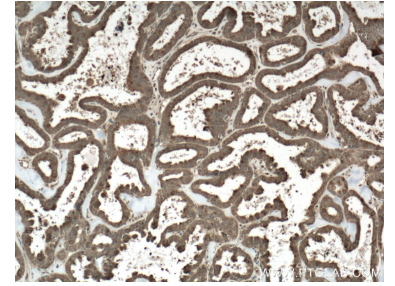
Données de validation sélectionnées



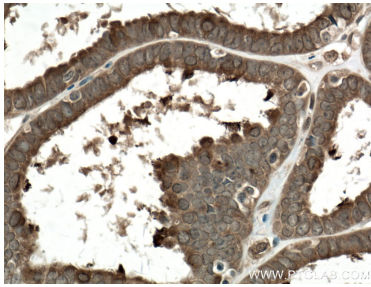
Immunofluorescent analysis of (4% PFA) fixed human ovary tumor tissue using CSN2 antibody (66435-1-Ig, Clone: 2H10E6) at dilution of 1:400 and CoraLite®488-Conjugated AffiniPure Goat Anti-Mouse IgG(H+L).



NIH/3T3 cells were subjected to SDS PAGE followed by western blot with 66435-1-Ig (CSN2 antibody) at dilution of 1:8000 incubated at room temperature for 1.5 hours.



Immunohistochemical analysis of paraffin-embedded human ovary tumor tissue slide using 66435-1-Ig (CSN2 antibody) at dilution of 1:500 (under 10x lens). Heat mediated antigen retrieval with Tris-EDTA buffer (pH 9.0).



Immunohistochemical analysis of paraffin-embedded human ovary tumor tissue slide using 66435-1-Ig (COPS2 Antibody) at dilution of 1:500 (under 40x lens). Heat mediated antigen retrieval with Tris-EDTA buffer (pH 9.0).