

À des fins de recherche uniquement

Anticorps Monoclonal anti-NFE2

Numéro de catalogue: 66436-1-Ig



Informations de base

Numéro de catalogue: 66436-1-Ig	Numéro d'acquisition GenBank: BC005044	Méthode de purification: Purification par protéine G
Taille: 150ul , Concentration: 1600 µg/ml by Nanodrop and 1000 µg/ml by Bradford method using BSA as the standard;	Identification du gène (NCBI): 4778	CloneNo.: 1D7C8
Hôte: Mouse	Nom complet: nuclear factor (erythroid-derived 2), 45kDa	Dilutions recommandées: WB 1:1000-1:8000
Isotype: IgG1	MW calculé 41 kDa	
Immunogen Catalog Number: AG1570	MW observés: 45 kDa	

Applications

Applications testées: WB,ELISA	Contrôles positifs: WB : cellules HL-60, cellules K-562
Spécificité de l'espèce: Humain	

Informations générales

The transcription factor p45 nuclear factor-erythroid-derived 2(NFE2) is one component of the NF-E2 complex that essential for regulating erythroid and megakaryocytic maturation and differentiation. It also plays crucial roles in erythroid and megakaryocytic lineages. NFE2 recognizes the TCAT/C sequence of the AP-1-like core palindrome present in a number of erythroid and megakaryocytic gene promoters, and acts as a activator. And it may has a role in all aspects of hemoglobin production from globin and heme synthesis to procurement of iron.

Stockage

Stockage:
Stocker à -20°C. Stable pendant un an après l'expédition.
Tampon de stockage:
PBS avec azoture de sodium à 0,02 % et glycérol à 50 % pH 7,3
L'aliquotage n'est pas nécessaire pour le stockage à -20C

*** Les 20ul contiennent 0,1% de BSA.

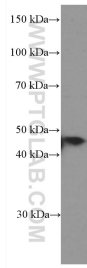
For technical support and original validation data for this product please contact:

T: 1 (888) 4PTGLAB (1-888-478-4522) (toll free
in USA), or 1(312) 455-8498 (outside USA)

E: proteintech@ptglab.com
W: ptglab.com

This product is exclusively available under Proteintech Group brand and is not available to purchase from any other manufacturer.

Données de validation sélectionnées



HL-60 cells were subjected to SDS PAGE followed by western blot with 66436-1-Ig (NFE2 Antibody) at dilution of 1:4000 incubated at room temperature for 1.5 hours.