

À des fins de recherche uniquement

# Anticorps Monoclonal anti-PEBP1

Numéro de catalogue: 66438-1-Ig



## Informations de base

Numéro de catalogue: 66438-1-Ig	Numéro d'acquisition GenBank: BC008714	Méthode de purification: Purification par protéine G
Taille: 150ul , Concentration: 1200 µg/ml by Nanodrop and 1000 µg/ml by Bradford method using BSA as the standard;	Identification du gène (NCBI): 5037	CloneNo.: 2D4D11
Hôte: Mouse	Nom complet: phosphatidylethanolamine binding protein 1	Dilutions recommandées: WB 1:1000-1:6000 IHC 1:50-1:500
Isotype: IgG1	MW calculé 21 kDa	
Immunogen Catalog Number: AG0864	MW observés: 23-27 kDa	

## Applications

Applications testées:  
FC (Intra), IHC, WB, ELISA

Spécificité de l'espèce:  
Humain, rat, souris

**Remarque-IHC: il est suggéré de démasquer l'antigène avec un tampon de TE buffer pH 9.0; (\*) À défaut, le démasquage de l'antigène peut être effectué avec un tampon citrate pH 6,0.**

Contrôles positifs:

WB : tissu cérébral humain fœtal, cellules Neuro-2a, cellules PC-12, tissu cérébral de rat

IHC : tissu de cancer de la prostate humain,

## Informations générales

Raf kinase inhibitor protein (RKIP), also termed phosphatidylethanolamine binding protein PEBP1, was initially identified as a potent inhibitor of Raf-1/MEK/ERK, NF-κB, and G-protein-coupled receptor signaling pathways. Later RKIP has been further identified as a metastasis suppressor and its loss of expression has been reported in various cancers. Its expression has been proposed as a prognostic marker for patients diagnosed with the above cancers.

## Stockage

Stockage:

Stocker à -20°C. Stable pendant un an après l'expédition.

Tampon de stockage:

PBS avec azoture de sodium à 0,02 % et glycérol à 50 % pH 7,3

L'aliquotage n'est pas nécessaire pour le stockage à -20C

\*\*\* Les 20ul contiennent 0,1% de BSA.

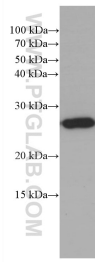
For technical support and original validation data for this product please contact:

T: 1 (888) 4PTGLAB (1-888-478-4522) (toll free  
in USA), or 1(312) 455-8498 (outside USA)

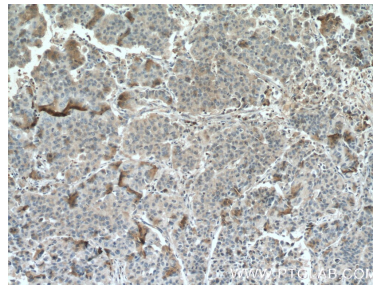
E: proteintech@ptglab.com  
W: ptglab.com

This product is exclusively available under Proteintech Group brand and is not available to purchase from any other manufacturer.

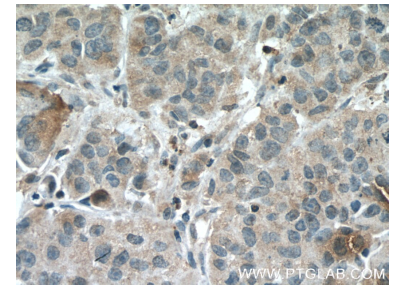
## Données de validation sélectionnées



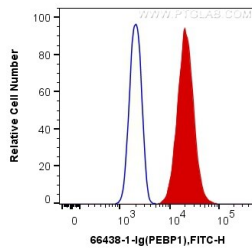
fetal human brain tissue were subjected to SDS PAGE followed by western blot with 66438-1-Ig (PEBP1 Antibody) at dilution of 1:3000 incubated at room temperature for 1.5 hours.



Immunohistochemical analysis of paraffin-embedded human prostate cancer tissue slide using 66438-1-Ig (PEBP1 Antibody) at dilution of 1:500 (under 10x lens). proteolytic pre-treatment mediated antigen retrieved with Tris-EDTA buffer (pH9).



Immunohistochemical analysis of paraffin-embedded human prostate cancer tissue slide using 66438-1-Ig (PEBP1 Antibody) at dilution of 1:500 (under 40x lens). proteolytic pre-treatment mediated antigen retrieved with Tris-EDTA buffer (pH9).



1X10<sup>6</sup> PC-12 cells were intracellularly stained with 0.4 ug Anti-Human PEBP1 (66438-1-Ig, Clone:2D4D11) and CoraLite®488-Conjugated AffiniPure Goat Anti-Mouse IgG(H+L) at dilution 1:1000 (red), or 0.4 ug Control Antibody. Cells were fixed with 4% PFA and permeabilized with Flow Cytometry Perm Buffer (PF00011-C).