

À des fins de recherche uniquement

Anticorps Monoclonal anti-KCHIP1

Numéro de catalogue: 66439-1-Ig



Informations de base

Numéro de catalogue: 66439-1-Ig	Numéro d'acquisition GenBank: BC050375	Méthode de purification: Purification par protéine G
Taille: 150ul, Concentration: 1300 µg/ml by Nanodrop and 1000 µg/ml by Bradford method using BSA as the standard;	Identification du gène (NCBI): 30820	CloneNo.: 3D6C1
Hôte: Mouse	Nom complet: Kv channel interacting protein 1	Dilutions recommandées: WB 1:1000-1:4000 IHC 1:50-1:500 IF 1:200-1:800
Isotype: IgG1	MW calculé: 227 aa, 27 kDa	
Immunogen Catalog Number: AG5494	MW observés: 25 kDa	

Applications

Applications testées:

IF, IHC, WB, ELISA

Spécificité de l'espèce:

Humain

Remarque-IHC: il est suggéré de démasquer l'antigène avec un tampon de TE buffer pH 9.0; (*) À défaut, 'le démasquage de l'antigène peut être effectué avec un tampon citrate pH 6,0.

Contrôles positifs:

WB : tissu de cervelet humain, tissu cérébral humain foetal, tissu splénique humain

IHC : tissu cérébral humain, tissu cardiaque humain

IF : tissu cérébral de souris,

Informations générales

Human K(v) channel interacting protein 1 (KCHIP1) is a new member of the neural calcium binding protein superfamily. Members of the KCNIP family are small calcium binding proteins. They all have EF-hand-like domains, and differ from each other in the N-terminus. They are integral subunit components of native Kv4 channel complexes. They may regulate A-type currents, and hence neuronal excitability, in response to changes in intracellular calcium. KCHIP1 is a neuronal calcium sensor protein that is predominantly expressed at GABAergic synapses and it has been related with modulation of K(+) channels, GABAergic transmission and cell death.

Stockage

Stockage:

Stocker à -20°C. Stable pendant un an après l'expédition.

Tampon de stockage:

PBS avec azoture de sodium à 0,02 % et glycérol à 50 % pH 7,3

L'aliquotage n'est pas nécessaire pour le stockage à -20C

*** Les 20ul contiennent 0,1% de BSA.

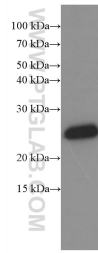
For technical support and original validation data for this product please contact:

T: 1 (888) 4PTGLAB (1-888-478-4522) (toll free in USA), or 1(312) 455-8498 (outside USA)

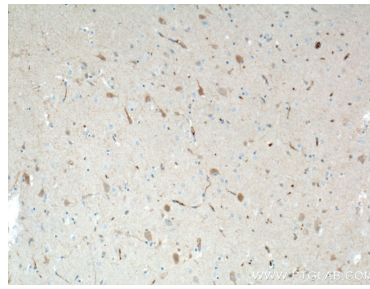
E: proteintech@ptglab.com
W: ptglab.com

This product is exclusively available under Proteintech Group brand and is not available to purchase from any other manufacturer.

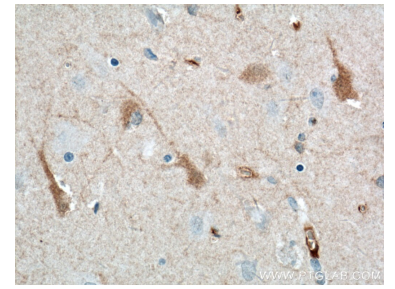
Données de validation sélectionnées



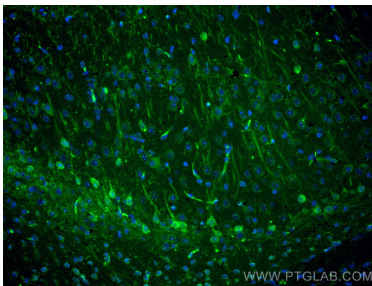
human cerebellum tissue were subjected to SDS PAGE followed by western blot with 66439-1-Ig (KChIP1 antibody at dilution of 1:2000 incubated at room temperature for 1.5 hours.



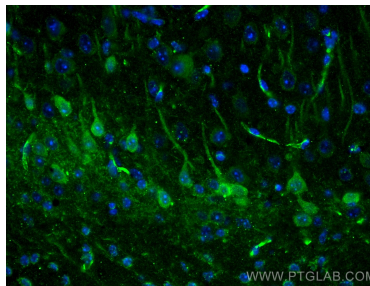
Immunohistochemical analysis of paraffin-embedded human brain tissue slide using 66439-1-Ig (KChIP1 antibody at dilution of 1:200 (under 10x lens). Heat mediated antigen retrieval with Tris-EDTA buffer (pH 9.0).



Immunohistochemical analysis of paraffin-embedded human brain tissue slide using 66439-1-Ig (KChIP1 antibody at dilution of 1:200 (under 40x lens). Heat mediated antigen retrieval with Tris-EDTA buffer (pH 9.0).



Immunofluorescent analysis of (4% PFA) fixed mouse brain tissue using KChIP1 antibody (66439-1-Ig, Clone: 3D6C1) at dilution of 1:400 and CoraLite®488-Conjugated AffiniPure Goat Anti-Mouse IgG(H+L).



Immunofluorescent analysis of (4% PFA) fixed mouse brain tissue using KChIP1 antibody (66439-1-Ig, Clone: 3D6C1) at dilution of 1:400 and CoraLite®488-Conjugated AffiniPure Goat Anti-Mouse IgG(H+L).