

À des fins de recherche uniquement

Anticorps Monoclonal anti-CCM3/PDCD10



Numéro de catalogue: 66440-1-Ig **Phare**

Informations de base

Numéro de catalogue: 66440-1-Ig	Numéro d'acquisition GenBank: BC002506	Méthode de purification: Purification par protéine G
Taille: 150ul, Concentration: 1300 µg/ml by Nanodrop and 1000 µg/ml by Bradford method using BSA as the standard;	Identification du gène (NCBI): 11235	CloneNo.: 1E5A8
Hôte: Mouse	Nom complet: programmed cell death 10	Dilutions recommandées: WB 1:1000-1:6000 IHC 1:50-1:500
Isotype: IgG1	MW calculé: 25 kDa	
Immunogen Catalog Number: AG0348	MW observés: 25-30 kDa	

Applications

Applications testées:

IHC, WB, ELISA

Spécificité de l'espèce:

Humain

Remarque-IHC: il est suggéré de démasquer l'antigène avec un tampon de TE buffer pH 9,0; (*) À défaut, le démasquage de l'antigène peut être effectué avec un tampon citrate pH 6,0.

Contrôles positifs:

WB : cellules Jurkat, cellules Ramos, cellules U-251, plaquettes de sang périphérique humain

IHC : tissu de cancer du côlon humain, tissu de cancer du foie humain

Informations générales

PDCD10, also named CCM3 and TFAR15, belongs to the PDCD10 family. PDCD10 promotes cell proliferation, increases MAPK activity and modulates apoptotic pathways. PDCD10 is important for cell migration and for normal structure and assembly of the Golgi complex. PDCD10 is required for normal angiogenesis, vasculogenesis and hematopoiesis during embryonic development, moreover, defects in PDCD10 showed abnormal cardiovascular development.

Stockage

Stockage:

Stocker à -20°C. Stable pendant un an après l'expédition.

Tampon de stockage:

PBS avec azoture de sodium à 0,02 % et glycérol à 50 % pH 7,3

L'aliquotage n'est pas nécessaire pour le stockage à -20C

*** Les 20ul contiennent 0,1% de BSA.

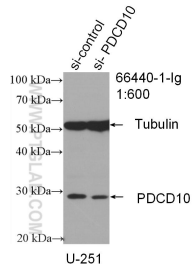
For technical support and original validation data for this product please contact:

T: 1 (888) 4PTGLAB (1-888-478-4522) (toll free in USA), or 1(312) 455-8498 (outside USA)

E: proteintech@ptglab.com
W: ptglab.com

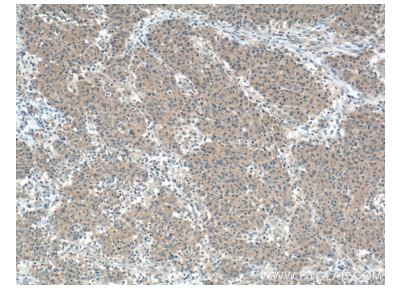
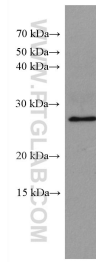
This product is exclusively available under Proteintech Group brand and is not available to purchase from any other manufacturer.

Données de validation sélectionnées

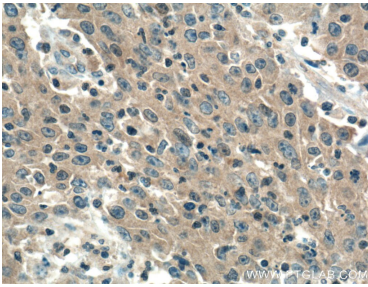


WB result of CCM3/PDCD10 antibody (66440-1-Ig; 1:600; incubated at room temperature for 1.5 hours) with sh-Control and sh-PDCD10 transfected U-251 cells.

Jurkat cells were subjected to SDS PAGE followed by western blot with 66440-1-Ig (CCM3/PDCD10 antibody) at dilution of 1:3000 incubated at room temperature for 1.5 hours.



Immunohistochemical analysis of paraffin-embedded human colon cancer tissue slide using 66440-1-Ig (CCM3/PDCD10 Antibody) at dilution of 1:200 (under 10x lens). Heat mediated antigen retrieval with Tris-EDTA buffer (pH 9.0).



Immunohistochemical analysis of paraffin-embedded human colon cancer tissue slide using 66440-1-Ig (PDCD10 Antibody) at dilution of 1:200 (under 40x lens). Heat mediated antigen retrieval with Tris-EDTA buffer (pH 9.0).