

À des fins de recherche uniquement

Anticorps Monoclonal anti-HLA-G

Numéro de catalogue: 66447-1-Ig **17 Publications**



Informations de base

Numéro de catalogue: 66447-1-Ig	Numéro d'acquisition GenBank: BC021708	Méthode de purification: Purification par protéine A
Taille: 150ul , Concentration: 1300 µg/ml by Nanodrop and 1000 µg/ml by Bradford method using BSA as the standard;	Identification du gène (NCBI): 3135	CloneNo.: 1E5A10
Hôte: Mouse	Nom complet: major histocompatibility complex, class I, G	Dilutions recommandées: WB 1:2000-1:20000 IHC 1:50-1:500
Isotype: IgG2b	MW calculé 338 aa, 38 kDa	
Immunogen Catalog Number: AG10839	MW observés: 33-45 kDa	

Applications

Applications testées:

IHC, WB, ELISA

Demandes citées:

IF, IHC, WB

Spécificité de l'espèce:

Humain

Espèces citées:

Humain

Remarque-IHC: il est suggéré de démasquer l'antigène avec un tampon de TE buffer pH 9,0; (*) A défaut, 'le démasquage de l'antigène peut être 'effectué avec un tampon citrate pH 6,0.

Contrôles positifs:

WB : tissu placentaire humain,

IHC : tissu placentaire humain,

Informations générales

Human major histocompatibility complex (MHC) antigens, also referred to as human leukocyte antigens (HLA), are encoded by genes located on the short arm of chromosome 6 (6p21.3). HLA-G is a non-classical MHC class I molecule with multiple immunoregulatory properties. HLA-G exhibits a restricted pattern of expression that includes placental extravillous trophoblasts at the maternal-fetal interface, where it abolishes maternal immune cell activity against fetus and establishes immune tolerance. Aberrant expression of HLA-G has been found in a variety of human neoplastic diseases. It plays an important role in the escape of tumor cells from immunosurveillance.

Publications notables

Autrice	Pubmed ID	Journal	Application
Liling Xiong	34605151	Aging Cell	IHC,IF
Manni Sun	33205477	FASEB J	IHC
Jingmei Ma	36420138	Front Cell Dev Biol	IHC,IF

Stockage

Stockage:

Stocker à -20°C. Stable pendant un an après l'expédition.

Tampon de stockage:

PBS avec azoture de sodium à 0,02 % et glycérol à 50 % pH 7,3

L'aliquotage n'est pas nécessaire pour le stockage à -20C

*** Les 20ul contiennent 0,1% de BSA.

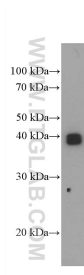
For technical support and original validation data for this product please contact:

T: 1 (888) 4PTGLAB (1-888-478-4522) (toll free in USA), or 1(312) 455-8498 (outside USA)

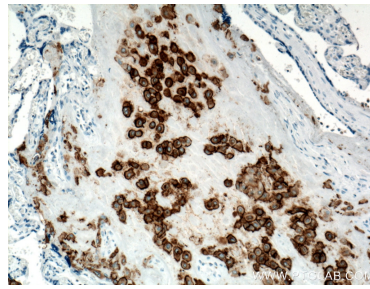
E: proteintech@ptglab.com
W: ptglab.com

This product is exclusively available under Proteintech Group brand and is not available to purchase from any other manufacturer.

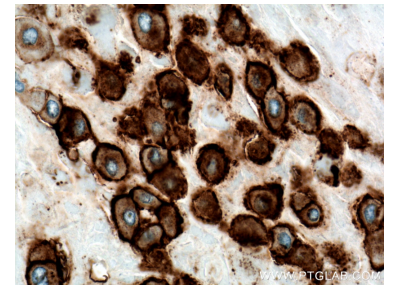
Données de validation sélectionnées



human placenta tissue were subjected to SDS PAGE followed by western blot with 66447-1-Ig (HLA-G Antibody) at dilution of 1:5000 incubated at room temperature for 1.5 hours.



Immunohistochemical analysis of paraffin-embedded human placenta tissue slide using 66447-1-Ig (HLA-G Antibody) at dilution of 1:400 (under 10x lens). Heat mediated antigen retrieval with Tris-EDTA buffer (pH 9.0).



Immunohistochemical analysis of paraffin-embedded human placenta tissue slide using 66447-1-Ig (HLA-G Antibody) at dilution of 1:400 (under 40x lens). Heat mediated antigen retrieval with Tris-EDTA buffer (pH 9.0).