

À des fins de recherche uniquement

# Anticorps Monoclonal anti-ZO-1

Numéro de catalogue: 66452-1-Ig

Phare

43 Publications



## Informations de base

<b>Numéro de catalogue:</b> 66452-1-Ig	<b>Numéro d'acquisition GenBank:</b> BC111712	<b>Méthode de purification:</b> Purification par protéine A
<b>Taille:</b> 150ul , Concentration: 2000 µg/ml by Nanodrop;	<b>Identification du gène (NCBI):</b> 7082	<b>CloneNo.:</b> 1G4A1
<b>Hôte:</b> Mouse	<b>Nom complet:</b> tight junction protein 1 (zona occludens 1)	<b>Dilutions recommandées:</b> WB 1:1000-1:6000 IHC 1:200-1:800 IF 1:750-1:3000
<b>Isotype:</b> IgG1	<b>MW calculé:</b> 1748 aa, 195 kDa	
<b>Immunogen Catalog Number:</b> AG16454	<b>MW observés:</b> 230 kDa	

## Applications

### Applications testées:

IF, IHC, WB, ELISA

### Demandes citées:

IF, IHC, WB

### Spécificité de l'espèce:

canin, Humain

### Espèces citées:

Humain, porc

### Contrôles positifs:

**WB** : cellules HUVEC, cellules A431, cellules COLO 320, cellules HEK-293, cellules HeLa, cellules HepG2, cellules LNCaP

**IHC** : tissu de cancer du pancréas humain, tissu de cancer de la prostate humain

**IF** : cellules MCF-7, cellules MDCK, tissu de cancer du sein humain

**Remarque-IHC: il est suggéré de démasquer l'antigène avec un tampon de TE buffer pH 9,0; (\*) À défaut, le démasquage de l'antigène peut être effectué avec un tampon citrate pH 6,0.**

## Informations générales

Tight junction (or zonula occludens) form the continuous intercellular barrier between epithelial and endothelial cells, which is required to separate tissue spaces and regulate selective movement of solutes across the epithelium and endothelium (PMID: 20066090). ZO-1 (also known as TJP1) is a peripheral membrane phosphoprotein located on the cytoplasmic face and is expressed in tight junctions of both epithelial and endothelial cells (PMID: 3528172). It binds the transmembrane proteins occludin and the claudins linking them to cytoskeletal actin (PMID: 17418867). ZO-1 belongs to a family of multidomain proteins known as the membrane-associated guanylate kinase homologs (MAGUKs). It is a pivotal tight junction protein and may be involved in signalling mechanisms regulating cell proliferation and differentiation (PMID: 22782886).

## Publications notables

Autrice	Pubmed ID	Journal	Application
Dayun Feng	36179025	Sci Adv	WB
Chengmei Huang	34583750	J Exp Clin Cancer Res	IF
Yingying Wang	36174863	Int J Biol Macromol	WB,IF

## Stockage

### Stockage:

Stocker à -20°C. Stable pendant un an après l'expédition.

### Tampon de stockage:

PBS avec azoture de sodium à 0,02 % et glycérol à 50 % pH 7,3

L'aliquote n'est pas nécessaire pour le stockage à -20C

\*\*\* Les 20ul contiennent 0,1% de BSA.

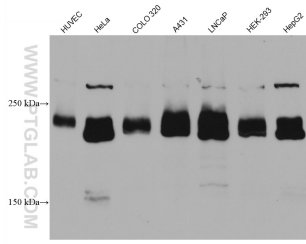
For technical support and original validation data for this product please contact:

T: 1 (888) 4PTGLAB (1-888-478-4522) (toll free in USA), or 1(312) 455-8498 (outside USA)

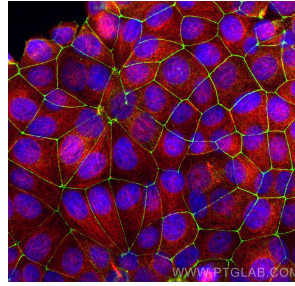
E: proteintech@ptglab.com  
W: ptglab.com

This product is exclusively available under Proteintech Group brand and is not available to purchase from any other manufacturer.

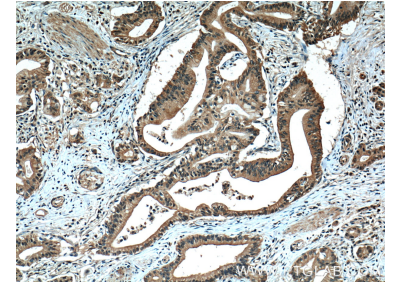
## Données de validation sélectionnées



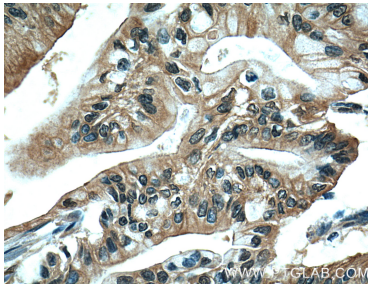
Various lysates were subjected to SDS PAGE followed by western blot with 66452-1-Ig (ZO-1 antibody) at dilution of 1:3000 incubated at room temperature for 1.5 hours.



Immunofluorescent analysis of (4% PFA) fixed MCF-7 cells using ZO-1 antibody (66452-1-Ig, Clone: 1G4A1 ) at dilution of 1:1500 and CoraLite®488-Conjugated AffiniPure Goat Anti-Mouse IgG(H+L), Alpha Tubulin antibody (11224-1-AP, red).



Immunohistochemical analysis of paraffin-embedded human pancreas cancer tissue slide using 66452-1-Ig (ZO-1 antibody) at dilution of 1:400 (under 10x lens. Heat mediated antigen retrieval with Tris-EDTA buffer (pH 9.0).



Immunohistochemical analysis of paraffin-embedded human pancreas cancer tissue slide using 66452-1-Ig (ZO-1 antibody) at dilution of 1:400 (under 40x lens. Heat mediated antigen retrieval with Tris-EDTA buffer (pH 9.0).