

À des fins de recherche uniquement

Anticorps Monoclonal anti-Lysozyme



Numéro de catalogue: 66456-1-Ig **1 Publications**

Informations de base

Numéro de catalogue: 66456-1-Ig	Numéro d'acquisition GenBank: BC004147	Méthode de purification: Purification par protéine A
Taille: 150ul , Concentration: 2100 µg/ml by Nanodrop and 1000 µg/ml by Bradford method using BSA as the standard;	Identification du gène (NCBI): 4069	CloneNo.: 2G5A8
Hôte: Mouse	Nom complet: Lysozyme (renal amyloidosis)	Dilutions recommandées: WB 1:500-1:2000
Isotype: IgG2a	MW calculé 17 kDa	
Immunogen Catalog Number: AG6917	MW observés: 15-17 kDa	

Applications

Applications testées: WB, ELISA	Contrôles positifs: WB : tissu splénique humain, cellules RAW 264.7, tissu splénique de porc, tissu splénique de rat
Demandes citées: WB	
Spécificité de l'espèce: Humain, porc, rat, souris	
Espèces citées: souris	

Informations générales

LYZ(Lysozyme C) is also named as LZM and belongs to the glycosyl hydrolase 22 family. It catalyzes the hydrolysis of the bacterial cell wall beta(1-4) glycosidic linkages between N-acetylmuramic acid and N-acetylglucosamine. In tissues and body fluids this protein is associated with the monocyte-macrophage system and enhance the activity of immunoagents. LYZ is capable of both hydrolysis and transglycosylation; it shows also a slight esterase activity. Defects in LYZ are a cause of amyloidosis type 8 (AMYL8). The full length protein has a signal peptide with 18 amino acid.

Publications notables

Autrice	Pubmed ID	Journal	Application
Xin Xu	37481722	Cell Rep	WB

Stockage

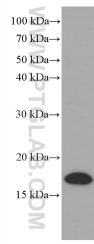
Stockage:
Stocker à -20°C. Stable pendant un an après l'expédition.
Tampon de stockage:
PBS avec azoture de sodium à 0,02 % et glycérol à 50 % pH 7,3
L'aliquotage n'est pas nécessaire pour le stockage à -20C

*** Les 20ul contiennent 0,1% de BSA.

For technical support and original validation data for this product please contact:
T: 1 (888) 4PTGLAB (1-888-478-4522) (toll free in USA), or 1(312) 455-8498 (outside USA)
E: proteintech@ptglab.com
W: ptglab.com

This product is exclusively available under Proteintech Group brand and is not available to purchase from any other manufacturer.

Données de validation sélectionnées



human spleen tissue were subjected to SDS PAGE followed by western blot with 66456-1-Ig (Lysozyme antibody) at dilution of 1:1000 incubated at room temperature for 1.5 hours.