

À des fins de recherche uniquement

Anticorps Monoclonal anti-GABARAPL1



Numéro de catalogue: 66458-1-Ig **1 Publications**

Informations de base

Numéro de catalogue: 66458-1-Ig	Numéro d'acquisition GenBank: BC009309	Méthode de purification: Purification par protéine G
Taille: 150ul, Concentration: 1200 µg/ml by Nanodrop and 1000 µg/ml by Bradford method using BSA as the standard;	Identification du gène (NCBI): 23710	CloneNo.: 1E10F6
Hôte: Mouse	Nom complet: GABA(A) receptor-associated protein like 1	Dilutions recommandées: WB 1:1000-1:4000 IF 1:300-1:1200
Isotype: IgG1	MW calculé: 14 kDa	
Immunogen Catalog Number: AG1473	MW observés: 16-18 kDa	

Applications

Applications testées:

IF, WB, ELISA

Demandes citées:

IF, WB

Spécificité de l'espèce:

Humain, porc, rat, souris

Espèces citées:

Humain

Contrôles positifs:

WB : tissu cérébral de souris, tissu cérébral de porc, tissu cérébral de rat

IF : cellules HepG2,

Informations générales

GABARAPL1 (GABARAP-like protein 1), also named as ATG8, GEC1, APG8L, ATG8L and APG8-LIKE, is a member of GABARP (GABAA receptor-associated protein) family. GABARAPL1 was initially identified as estrogen-regulated gene and the protein acts in receptor and vesicle transport. It's also involved in the process of autophagy like GABARAP and GABARAPL2, and may be considered as an autophagic marker. It is expressed at very high levels in the brain, heart, peripheral blood leukocytes, liver, kidney, placenta and skeletal muscle and at very low levels in thymus and small intestine.

Publications notables

Autrice	Pubmed ID	Journal	Application
Mai Tram Vo	37459327	PLoS Pathog	WB,IF

Stockage

Stockage:

Stocker à -20°C. Stable pendant un an après l'expédition.

Tampon de stockage:

PBS avec azoture de sodium à 0,02 % et glycérol à 50 % pH 7,3

L'aliquotage n'est pas nécessaire pour le stockage à -20C

*** Les 20ul contiennent 0,1% de BSA.

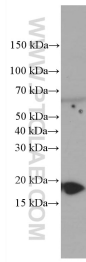
For technical support and original validation data for this product please contact:

T: 1 (888) 4PTGLAB (1-888-478-4522) (toll free in USA), or 1(312) 455-8498 (outside USA)

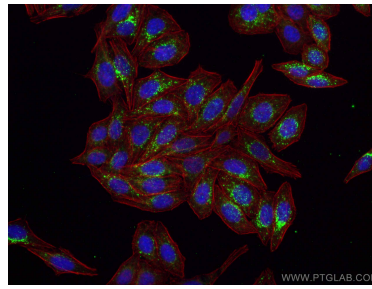
E: proteintech@ptglab.com
W: ptglab.com

This product is exclusively available under Proteintech Group brand and is not available to purchase from any other manufacturer.

Données de validation sélectionnées



mouse brain tissue were subjected to SDS PAGE followed by western blot with 66458-1-Ig (GABARAPL1 antibody) at dilution of 1:2000 incubated at room temperature for 1.5 hours.



Immunofluorescent analysis of (-20°C Ethanol) fixed HepG2 cells using GABARAPL1 antibody (66458-1-Ig, Clone: 1E10F6) at dilution of 1:600 and CoraLite®488-Conjugated AffiniPure Goat Anti-Mouse IgG(H+L), CL594-Phalloidin (red).