

À des fins de recherche uniquement

Anticorps Monoclonal anti-Caspase 3/p17/p19



Numéro de catalogue: 66470-2-Ig

Phare

196 Publications

Informations de base

| | | |
|---|---|---|
| Numéro de catalogue: 66470-2-Ig | Numéro d'acquisition GenBank: BC016926 | Méthode de purification: Purification par protéine G |
| Taille: 150ul , Concentration: 1500 µg/ml by Nanodrop; | Identification du gène (NCBI): 836 | CloneNo.: 2G4B2 |
| Hôte: Mouse | Nom complet: caspase 3, apoptosis-related cysteine peptidase | Dilutions recommandées: WB 1:1000-1:3000 IHC 1:150-1:600 IF 1:50-1:500 |
| Isotype: IgG1 | MW calculé: 277 aa, 32 kDa | |
| Immunogen Catalog Number: AG25029 | MW observés: 32-35 kDa, 19 kDa, 17 kDa | |

Applications

Applications testées:

IF, IHC, WB, ELISA

Demandes citées:

ICC, IF, IHC, WB

Spécificité de l'espèce:

Humain, rat, souris

Espèces citées:

canin, Humain, plante, porc, poulet, rat, souris

Remarque-IHC: il est suggéré de démasquer l'antigène avec un tampon de TE buffer pH 9,0; (*) À défaut, le démasquage de l'antigène peut être effectué avec un tampon citrate pH 6,0.

Contrôles positifs:

WB : cellules Jurkat, cellules HEK-293, cellules HepG2, cellules HSC-T6, cellules NIH/3T3

IHC : tissu de cancer du sein humain, tissu hépatique de souris, tissu rénal de souris

IF : tissu de cancer du sein humain, cellules HepG2

Informations générales

Caspases, a family of endoproteases, are critical players in cell regulatory networks controlling inflammation and cell death. Initiator caspases (caspase-2, -8, -9, -10, -11, and -12) cleave and activate downstream effector caspases (caspase-3, -6, and -7), which in turn execute apoptosis by cleaving targeted cellular proteins. Caspase 3 (also named CPP32, SCA-1, and Apopain) proteolytically cleaves poly(ADP-ribose) polymerase (PARP) at the beginning of apoptosis. Caspase 3 plays a key role in the activation of sterol regulatory element binding proteins (SREBPs) between the basic helix-loop-helix leucine zipper domain and the membrane attachment domain. Caspase 3 can also form heterocomplex with other proteins and performs the molecular mass of 50-70 kDa. This antibody can recognize p17, p19 and p32 of Caspase 3.

Publications notables

| Autrice | Pubmed ID | Journal | Application |
|----------------|-----------|------------------------|-------------|
| Jingjing Zheng | 32978798 | Ann N Y Acad Sci | WB |
| Yaling Zhang | 36233452 | J Clin Med | IF |
| Yang Liu | 36149580 | Cell Stress Chaperones | WB |

Stockage

Stockage:

Stocker à -20°C. Stable pendant un an après l'expédition.

Tampon de stockage:

PBS avec azoture de sodium à 0,02 % et glycérol à 50 % pH 7,3

L'aliquoteage n'est pas nécessaire pour le stockage à -20C

*** Les 20ul contiennent 0,1% de BSA.

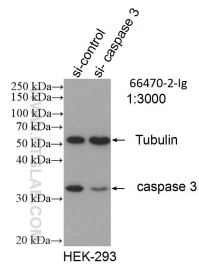
For technical support and original validation data for this product please contact:

T: 1 (888) 4PTGLAB (1-888-478-4522) (toll free in USA), or 1(312) 455-8498 (outside USA)

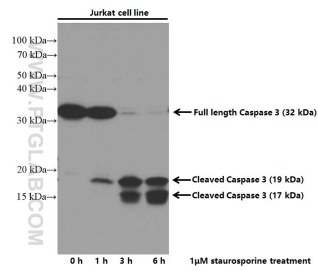
E: proteintech@ptglab.com
W: ptglab.com

This product is exclusively available under Proteintech Group brand and is not available to purchase from any other manufacturer.

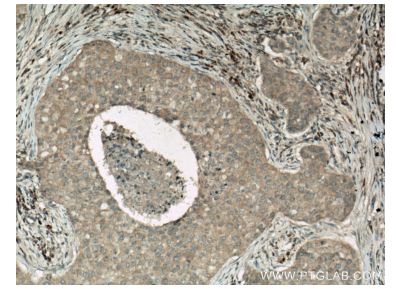
Données de validation sélectionnées



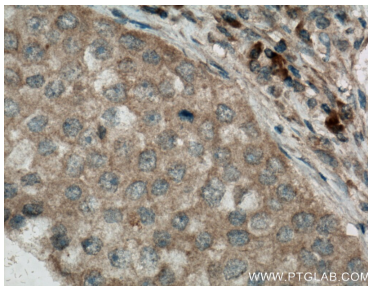
WB result of Caspase 3 antibody (66470-2-Ig; 1:3000; incubated at room temperature for 1.5 hours) with sh-Control and sh-Caspase 3 transfected HEK-293 cells.



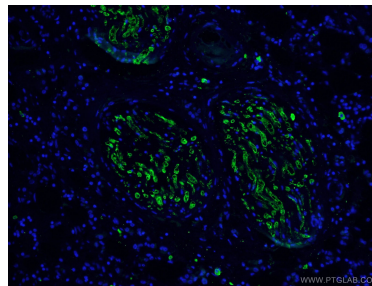
Untreated and Staurosporine treated Jurkat cells were subjected to SDS PAGE followed by western blot with 66470-2-Ig (CASP3 antibody) at dilution of 1:3000 incubated at room temperature for 1.5 hours.



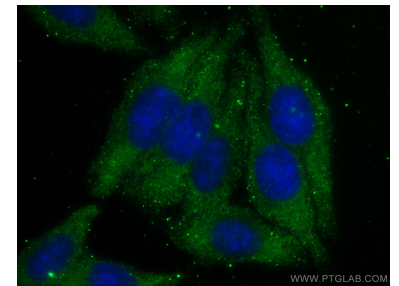
Immunohistochemical analysis of paraffin-embedded human breast cancer tissue slide using 66470-2-Ig (CASP3 antibody) at dilution of 1:300 (under 10x lens. Heat mediated antigen retrieval with Tris-EDTA buffer (pH 9.0).



Immunohistochemical analysis of paraffin-embedded human breast cancer tissue slide using 66470-2-Ig (CASP3 antibody) at dilution of 1:300 (under 40x lens. Heat mediated antigen retrieval with Tris-EDTA buffer (pH 9.0).



Immunofluorescent analysis of (4% PFA) fixed human breast cancer tissue using 66470-2-Ig (CASP3 antibody) at dilution of 1:100 and Alexa Fluor 488-conjugated AffiniPure Goat Anti-Mouse IgG(H+L).



Immunofluorescent analysis of (-20°C Ethanol) fixed HepG2 cells using Caspase 3/p17/p19 antibody (66470-2-Ig, Clone: 2G4B2) at dilution of 1:800 and CoraLite®488-Conjugated AffiniPure Goat Anti-Mouse IgG(H+L).